



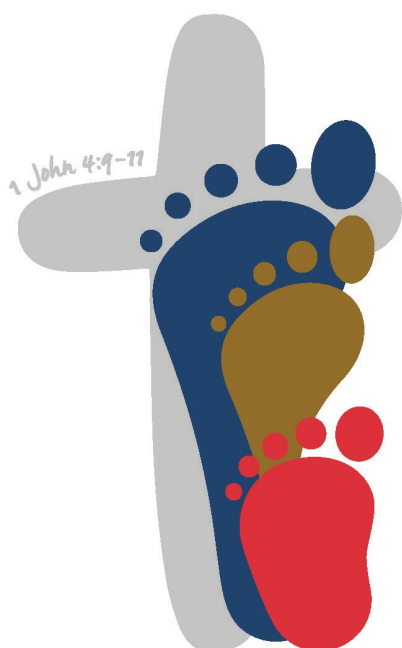
LUTHERAN  
CHURCH  
OF AUSTRALIA

NEW SOUTH WALES DISTRICT

# LCA NSW District 38th Convention of Synod

6-8 March 2020

St Pauls College, Walla Walla



*Walking together*  
IN MISSION

Book of Reports

# Contents

Daily Program	2	Turning Point Ministries	31
Constituting of Convention	3	St Paul's College	32
Synod Agenda	4	Lutheran Education LEVNT	35
Nominations	6	Lutheran Aged Care Albury	38
Close of Convention	58	Lutheran Women NSW	43
<b>District and Regional Reports</b>		Professional Standards	44
NSW District Bishop	9	Property Trust	51
Local Mission	11	<b>LCA Reports</b>	
Sydney Future Directions	12	LCA Bishop	45
Regional Reports	13	Australian Lutheran World Service	47
District Church Council	21	LLL	48
Treasurer	21	<b>Archivist Reports</b>	
Administrator	26	Anniversaries and Pastor Changes	52
District Budget	25	Roll of District Pastors	53
Contributions from Congregations	50	Statistical Reports	54
<b>Auxiliaries and Committees</b>		Roll of Parishes and Delegates	56
Warrambui Board	27	Past Synods	57

## Daily Program *Walking together* IN MISSION

### Friday

		1:30	LCA International Mission Q&A
5:30pm	Registration open		District Treasurer
6:00	<i>Optional Dinner</i>		District Administrator
7:00	Opening Worship	2:30	Proposals
7:30	Welcome to Synod; Introductions;		Nominations and Elections
	Roll Call; Minute Takers; Closures;	3:00	<i>Afternoon tea</i>
	Nominations 1 <sup>st</sup> Reading	3:30	Warrambui
7:45	Education: St Paul's College		Turning Point Ministries
	LEVNT	4:45	NSW District Budget 2nd Reading and discussion
	LCA EOC Peter Schirmer	5:00	Closing Devotion – In Memoriam
	LCA Secretary Nigel Long	5:30	<i>Pre-dinner break</i>
9:00pm	Closing Prayer	6:30	<i>Dinner</i>
	<i>Supper</i>	9:00pm	Closing Prayer

### Saturday

8:30am	Morning Devotion
9:00	Strategic Plan: A map for <i>Walking Together in Mission</i> (WTIM) Session 1:
	District Bishop Report
	LCA Local Mission – Tania Nelson
	New and Renewing Churches – Dean Eaton
	Sydney Future Directions – Richard Schwedes
10:30	<i>Morning tea</i>
11:00	Strategic Plan: A map for WTIM Session 2:
	Includes group discussions
12:15pm	Nominations 2 <sup>nd</sup> Reading
	NSW District Budget 1 <sup>st</sup> Reading
12:30	<i>Lunch</i>

### Sunday

8:30am	Morning Devotion
8:45	LCA presentations
	ALWS
	Lutheran Aged Care
	Lutheran Women NSW
	Professional Standards
9:45	Closing formalities
10:05	Strategic Plan: A map for WTIM Session 3: Where to now?
10:15	<i>Morning tea</i>
11:00	Closing Service and Close of Convention
12:30pm	<i>Lunch</i>

# Constituting of Convention

- Bishop:* As in one body we have many members,
- Assembly:** so we, who are many, are one body in Christ.
- Bishop:* Where two or three are gathered in his name,
- Assembly:** he is there among them.
- Bishop:* Let us live a life worthy of our calling, with all humility and gentleness,
- Assembly:** eager to maintain the unity of the Spirit through the bond of peace.
- Bishop:* Let us pursue the things that make for peace,
- Assembly:** and build up the common life.
- Bishop:* Christ has opened a door in front of us,
- Assembly:** which no-one can close.
- Bishop:* The Lord be with you.
- Assembly:** And also with you.
- Bishop:* Let us pray: Almighty God, the Father of our Lord Jesus Christ, of whom the whole family in heaven and earth is named: Grant, we pray, to your church here assembled, the presence of the Holy Spirit, so that in all our deliberations we may be guided in all truth, preserved from strife and vain glory, and, one in you, may constantly abide in that Christian unity which is well pleasing in your sight.
- Let us together give expression to our Confession as contained in the Constitution of the Church.
- Assembly:** We accept without reservation the holy Scriptures of the Old and New Testaments as a whole and in all their parts, as the divinely inspired, written and inerrant Word of God, and as the only infallible source and norm for all matters of Faith, Doctrine, and Life. We acknowledge and accept as true expositions of the Word of God and as our own Confession all the Symbolical Books of the Evangelical Lutheran Church contained in the Book of Concord of 1580, namely, the Three Ecumenical Creeds, The Apostles' Creed, The Nicene Creed, The Athanasian Creed; The Unaltered Augsburg Confession; The Apology of the Augsburg Confession; The Smalcald Articles; The Small Catechism of Luther, The Large Catechism of Luther; and the Formula of Concord.
- Bishop:* I now declare this Thirty-eighth Regular Convention of the Lutheran Church of Australia, New South Wales District, open; In the name of the Father, and of the Son, and of the Holy Spirit. Amen.
- And now may the Father of our Lord Jesus Christ, who has called us with a holy calling, and has committed to our trust the glorious Gospel of the grace of God, make you to increase and abound in love toward one another, and toward all people, that you may be steadfast, unmovable, always abounding in the work of the Lord.
- Assembly:** Amen.

# Agenda

## A. Preliminaries

1. Formal Constitution of Convention
  - a. Opening
2. Conduct of Business
  - a. Voting

***Be it resolved that decisions be reached by consensus or by vote in the manner decided by the Chairman.***

3. Appointments
  - a. Synod Chairperson
  - b. Minute Secretaries
  - c. Committee for Verification of Minutes
  - d. Tellers
  - e. Reporter: 'Contact'

***Be it resolved that the above named persons be appointed to serve this Synodical Convention.***

4. Welcome
  - a. By NSW District Bishop:  
Pr Robert Bartholomaeus
  - b. By St Paul's College
  - c. By Others

5. Roll Call
  - a. Beginning of Session 1: Secretary
  - b. Attendance Report: Secretary

### 6. Greetings

### 7. Apologies

### 8. Adoption of Minutes

The NSW DCC has vetted the 37<sup>th</sup> Regular Synodical Convention Minutes as circulated to the 2017 delegates and congregation secretaries and recommends their adoption.

***Be it resolved that the minutes of the 37<sup>th</sup> Regular Synodical Convention, 2017, be adopted.***

***Be it resolved that the minutes of the Special Convention of Synod held 23 March 2019, be adopted.***

### 9. Reading of Reports and Statements

***Be it resolved that printed reports be taken as read and received unless otherwise indicated.***

### 10. Adoption of Reports and Statements

***Be it resolved that at the close of Convention reports and statements tabled during Convention be adopted.***

### 11. Proposals

***Be it resolved that agenda proposals be taken as moved and seconded.***

***Be it resolved that additional late proposals be taken as moved and seconded.***

***Be it resolved that all tabled reports and proposals in the report book and late proposals and reports be accepted and debated at the appropriate time.***

### 12. Convention Minutes

***Be it resolved that the appointed Committee for the verification of minutes, vet Synodical Convention minutes, correct where necessary and recommend printing of the minutes to the Secretary.***

### 13. Membership

- a. Closures:

Coffs Harbour, Anna Bay

***Be it resolved that Convention notes these closures, giving thanks and praise to God for the many blessings He has poured out through these places of worship and fellowship.***

- b. Parishes dissolved: Bankstown Parish

Yagoona church building and manse sold to Indonesian GKIA

Lavington Parish

- c. Parish realignment: Albury and Corowa

### 14. First Reading of Nominations

## B. LCA NSW District

### 1. Bishop's Report Pr Robert Bartholomaeus

- a. Thanks for ministries

The following pastors have accepted calls outside the NSW District since last Synodical Convention:

Pr Andrew Neumann

Pr Michael Rudolph

Pr Kim Kuchel

The following pastors have retired from parish ministry:

Pr Tim Zanker

Pr David Thompson (SMP)

Pr Robert Hamann

Pr Bruce Hohnberg (SMP)

Pr Mark Lieschke

***Be it resolved that Convention place on record its sincere thanks to the above named pastors for their faithful ministries while serving the NSW District.***

***Be it resolved that Convention give thanks to God for the service and ministry of Bishop James Haak, who died during the last synodical term.***

***Be it resolved that Convention express its sincere thanks to retired pastors who continue to serve faithfully in NSW post retirement.***

- b. Welcome to NSW District

The following pastors have been installed in the NSW District since last Synodical Convention:

Pr Ian Rentsch (SMP) Ordination

Pr Joseph Graham

Pr Kees Sturm

# Agenda

Pr Darryl Mattner  
 Pr Mathew von Stanke  
 Pr James Leach  
 Pr Erik Braunack Mayer  
 Pr Peter Fuhlbohm

c. Accepted Call within NSW District:

Pr Allan Taruste  
 Pr Robert Bartholomaeus  
 Pr Hans Peethala

d. Relocation of emeritus pastor:

Pr Dennis Obst

***Be it resolved that Convention welcome with joy the above pastors and their families and pray that these new co-workers will be richly blessed personally and bring many blessings both to their parishioners and to the NSW District.***

2. Warrambui Retreat and Conference Centre:

- a. Warrambui Board
- b. Financial statements and auditor's report

3. TPM Camping Ministry - Dion Jaeschke

4. NSW Nominations: Second Reading

5. NSW Budget: First Reading

6. Schools in NSW

- a. Council for Lutheran Education Victoria, NSW & Tasmania (LEVNT)
- b. LEVNT Director: Julian Denholm
- c. St Paul's College, Walla Walla:  
 Don Walkley, Principal  
 Anthony Lieschke, St Paul's Board.

7. Nomination and Election of Officers

- a. NSW Nominations: Third Reading: Secretary
- b. Elections
- c. Declaration of elections

***Be it resolved that Convention note the results of the 2020 elections and the District Church Council appointments.***

8. NSW District Budget

- a. Treasurer's Report
- b. Financial Statements
- c. Auditor's Report
- d. Property Trust
- e. 2020 NSW District Budget
- f. Adoption of the 2020 NSW District Budget

9. Lutheran Aged Care

Albury Aged Care. Management, Financial Statements and Auditor's report.

10. Lutheran Women in NSW (LWNSW):  
 Charmaine Lieschke

11. Professional Standards

12. In Memoriam

13. LCA Reports

14. Closing Formalities

***Be it resolved that Reports and statements tabled at Convention be adopted.***

***Be it resolved that unfinished business be referred to the District Church Council for action.***

a. Next Synod 2022

b. Vote of Thanks

15. Convention Closing Worship Service

# Nominations

Within the District any parish, congregation or member of a congregation may nominate a person for a position that is marked **Synod** in the '*nomination from*' column. When nominating use the form marked '2020 District Nomination Details' available from District Office (phone 8660 1200 or kaye.simpfendorfer@lca.org.au) and from Nominations Committee Convenor, David Menzel.

This worksheet shows positions, those elected/appointed at/since 2017 Convention, sitting personnel and who can nominate a candidate – Nomination from. Sitting personnel are eligible for re nomination.

**Positions marked 'DCC' are appointed by the District Church Council but you are invited to also nominate people for these positions for DCC's consideration.**

# = indicates not seeking nomination  
 ..... = nomination needed  
*Nominee's name* = further nominations can be made

## 2020 Convention Elections/DCC appointments

### Section 1. Synod Election

<i>Position</i>	<i>Elected/appointed</i>	<i>Sitting</i> <i>As at Jan 2020</i>	<i>Nominee</i>	<i>Nomination from</i>
<b>ADMINISTRATION</b>				
<b>01 BISHOP</b> ( <i>Elected for 2 Synodical terms – currently to 2022</i> )	Pr Robert Bartholomaeus	Pr Robert Bartholomaeus		
<b>02 ASSISTANT BISHOP</b>	Pr Richard Schwedes	Pr Richard Schwedes	.....	Pr Conference & Synod floor
<b>03 REGIONAL PASTOR</b>				
Canberra	Pr Gabor Szabo	Pr Gabor Szabo	.....	Pr Conference
Coastal North	Pr Michael Rudolph	.....	.....	Pr Conference
Coastal South	Pr Simon Mackenzie	Pr Simon Mackenzie	.....	Pr Conference
North West	Pr Darren Kupke	Pr Darren Kupke	.....	Pr Conference
Riverina	Pr David Grulke	Pr John Borchert	.....	Pr Conference
<b>04 THE SECRETARY</b>	Elizabeth Eckermann	Elizabeth Eckermann	.....	Synod
<b>05 TREASURER</b>	Bruce Arnold	Bruce Arnold	.....	Synod
<b>06 DISTRICT CHURCH COUNCIL</b>				
<i>Make up:- 9 members (skills-based structure) <b>Bishop, Assistant Bishop, Secretary, Treasurer, 1 pastor, 4 Lay Regional Layperson:-</b></i>				
(Bishop)	Pr Robert Bartholomaeus	Pr Robert Bartholomaeus		
(Assistant Bishop)	Pr Richard Schwedes	Pr Richard Schwedes		
(Secretary)	Elizabeth Eckermann	Elizabeth Eckermann		
(Treasurer)	Bruce Arnold	Bruce Arnold		
Pastor	Pr Christian Fandrich	Pr Christian Fandrich	.....	Synod
Layperson	Tony von Brandenstein	Tony von Brandenstein	.....	Synod
Layperson	Ann Robertson	.....	.....	Synod
Layperson	Thea Weber	.....	.....	Synod
Layperson	Ward Westphal	Ward Westphal	.....	Synod
Consultant: Administrator	Russell Veerhuis	Russell Veerhuis		

# Nominations

<b>Position</b>	<b>Elected/appointed</b>	<b>Sitting</b>	<b>Nominee</b>	<b>Nomination from</b>
<b>07 PROPERTY TRUST</b>				
<i>Make up:- 5 members: 3 elected by Synod, 2 appointed by DCC.</i>				
(Bishop)	Pr Robert Bartholomaeus	Pr Robert Bartholomaeus		DCC appointed
(Administrator)	Russell Veerhuis	Russell Veerhuis		DCC appointed
(Assistant Bishop)	Pr Richard Schwedes	Pr Richard Schwedes	.....	Synod
(Secretary)	Elizabeth Eckermann	Elizabeth Eckermann	.....	Synod
	Kaye Simpfendorfer	Kaye Simpfendorfer	.....	Synod

## WELFARE

### 08 LUTHERAN AGE CARE, ALBURY BOARD OF GOVERNANCE

*Make up:- 7 members, including one pastor. 7 nominated by Board for election by Synod*

Chairperson	Phillip Edwards	Phillip Edwards	.....	LACA
Executive Director	Ron Asquith	Ron Asquith	.....	LACA
Executive Director	Wendy Rocks	Wendy Rocks	.....	LACA
Pastor	Pr Christian Fandrich	Pr Christian Fandrich	.....	LACA
	Laura Thompson	Laura Thompson	.....	LACA
	Simona Coad	Simona Coad	.....	LACA
	Kevin Klose	Kevin Klose	.....	LACA

## AUXILIARIES

### 09 WARRAMBUI MANAGEMENT BOARD

*Make up:- 11 Members. DCC appoints Committee Treasurer and DCC rep. 9 elected by Synod, one being a pastor.*

DCC Rep.	Ward Westphal	Ward Westphal	.....	DCC appointed
Treasurer	Therese Heyne	Therese Heyne	.....	DCC appointed
Pastor	Pr Paul Hannola	#Pr Paul Hannola	.....	Synod
Chairperson	Neal Mason	Neal Mason	.....	Synod
Vice Chairperson	Garry Watson	Garry Watson	.....	Synod
	Geoff Hartwig	Geoff Hartwig	.....	Synod
	Donald Mclean	Donald Mclean	.....	Synod
	Phil Spann	Phil Spann	.....	Synod
Secretary	Tanya Cunningham	#Tanya Cunningham	.....	Synod
	Rex Packer	#Rex Packer	.....	Synod
	Katie Gray	#Katie Gray	.....	Synod
			.....	Synod
Ex Officio Bishop	Pr Robert Bartholomaeus	Pr Robert Bartholomaeus		
District Treasurer	Bruce Arnold	Bruce Arnold		
Consultant				
Retreat Director	Dean Salzke	Dean Salzke		

## Section 2. DCC Appointments for Synod Endorsement

Synod can nominate for DCC appointments

### ADMINISTRATION:

<b>10 ADMINISTRATOR</b>	Russell Veerhuis	Russell Veerhuis		DCC appointed
-------------------------	------------------	------------------	--	---------------

### 11 FINANCE ADVISORY COMMITTEE

*Make up: Consist of at least six members: The Treasurer, Administrator, a pastor and others.*

Treasurer	Bruce Arnold	Bruce Arnold	.....	
Administrator	Russell Veerhuis	Russell Veerhuis		
Pastor	Pr Matthew Eckermann	#Pr Matthew Eckermann	.....	DCC appointed
	Andrew Hoffmann	Andrew Hoffmann	.....	DCC appointed
	Mark Waldron	Mark Waldron	.....	DCC appointed
	Peter Weber	Peter Weber	.....	DCC appointed
Ex Officio Bishop	Pr Robert Bartholomaeus	Pr Robert Bartholomaeus		

# Nominations

Position	Elected/appointed	Sitting	Nominee	Nomination from
<b>12 NOMINATION COMMITTEE</b>				
Make up:-5 members, 2 pastors 3 lay people				
(Assistant Bishop)	Pr Richard Schwedes	Pr Richard Schwedes	.....	DCC appointed
(Pastor)	Pr Ian Rentsch	Pr Ian Rentsch	.....	DCC appointed
(Secretary)	Elizabeth Eckermann	Elizabeth Eckermann	.....	DCC appointed
(Committee convener)	David Menzel	David Menzel	.....	DCC appointed
	Kaye Simpfendorfer	Kaye Simpfendorfer	.....	DCC appointed
<b>13 2019 SYNODICAL CONVENTION PLANNING COMMITTEE</b>				
Make up:- Bishop, Assistant Bishop, Secretary, Administrator, plus as needed.				
	The named above			DCC appointed
CONGREGATIONAL LIFE				
<b>14 LWNSW: SPIRITUAL ADVISERS</b>				
LW Nominee	Pr David Thompson	Pr Mark Simpfendorfer	.....	LW NSW
LW Nominee	Pr Darren Kupke	Pr Kees Sturm	.....	LW NSW
<b>15 PROFESSIONAL STANDARDS</b>				
Professional Standards Officer	Carolyn Kiss	Carolyn Kiss	.....	LCA
EDUCATION				
<b>16 LUTHERAN EDUCATION, VICTORIA, NEW SOUTH WALES &amp; TASMANIA (LEVNT)</b>				
<b>NSW MEMBERS (2 members)</b>				
	Ron Asquith	# Ron Asquith	.....	DCC appointed
	Marianne Hammerton	Marianne Hammerton	.....	DCC appointed
<b>17 ST PAUL'S COLLEGE BOARD OF MANAGEMENT</b>				
Make up:-. 6 members: Nominated by LEVNT endorsed by DCC.				
Chairperson	Christine Biar	Christine Biar	.....	LEVNT
	Pr Dan Mueller	Pr Dan Mueller	.....	LEVNT
	Andrew Kearney	Andrew Kearney	.....	LEVNT
	Anthony Lieschke	Anthony Lieschke	.....	LEVNT
	Fiona Muller	Graham Kotzur	.....	LEVNT
	Jonathan Schoff	Jonathan Schoff	.....	LEVNT
DISTRICT REPRESENTATIVES				
<b>18 LUTHERAN LAYPEOPLE'S LEAGUE BOARD OF DIRECTORS (NSW Representatives)</b>				
	Nancy Fox	Nancy Fox	.....	DCC appointed
	Ron Asquith	Ron Asquith	.....	DCC appointed
<b>19 AUSTRALIAN LUTHERAN WORLD SERVICE</b>				
	Pr Ian Rentsch	Pr Ian Rentsch	.....	DCC appointed
<b>20 LCA JUDICIAL TRIBUNAL, NSW REP: (DCC to nominate for GCC appointment)</b>				
	Jim Ironside	Jim Ironside	.....	DCC appointed
		Nancy Fox	.....	DCC appointed
<b>21 NSW ECUMENICAL COUNCIL:</b>				
	Alison Short	Alison Short	.....	DCC appointed
<b>22 COUNCIL FOR CHRISTIANS AND JEWS:</b>				
	Alison Short	Alison Short	.....	DCC appointed

David Menzel  
Nominations Committee Convener

# District Bishop



**Bishop Robert Bartholomaeus**

Grace and peace to you from our Lord and Saviour, Jesus Christ.

The interval since the last synod in October 2017 has been overshadowed by the death of our bishop in office, Pr James Haak.

After his election, James moved from his congregation in Gatton Queensland and was installed as the new bishop on the 21<sup>st</sup> of January 2018 at Woden ACT. He quickly adapted to his new role, getting acquainted with congregations and pastors. He was the leader that many of us had prayed would arise. Over nine months he brought together the loose ends of our strategic planning process and everything was on track for a new beginning.

Then on the 20<sup>th</sup> of October 2018 the shocking news came, that after meetings in Adelaide, he had died in hospital overnight. It sent us all (especially myself) into shock. What was happening? Our beloved bishop was gone. Questions arose. What was God doing, taking away our bishop...taking away the husband of Marie and father of Aiden and Annie? The funeral was subsequently held in Gatton and a memorial service at Lifeway Epping. We were left contemplating the gap that had been left.

Again and again in the days to follow we were led back the trusting words of Job in the face of tragedy. "The Lord has given and the Lord has taken away, blessed be the name of the Lord." (Job 1:21). We learnt through our grief that God's plans are not dependent on any one human being. God can use what we call tragedy for his good purposes. We were taken back to the death of Christ and how that death has become the lynchpin of our faith.

We may never fully understand why God allowed James to be elected and then to die so soon. But we have come to understand that God's good purposes and plans continue to be fulfilled despite whatever our circumstances may be. We know that "Nothing can separate us from the love of God." (Romans 8:38) and his loving will for us.

## The Strategic Plan

So it was that on the 27<sup>th</sup> of February 2019, twenty four leaders from our district gathered under the grace of God and the facilitation of Paul Bullen to work together on developing a strategic plan for our district. There were participants that James himself had invited to the meeting, before his death. This gathering was the fulfilment of what had began under Bishop Mark Lieschke, was brought to fruition under Bishop James Haak, and took place in the first months of my being hurled into the role of bishop. Out of these two days of discussion the LCANSW strategic plan developed.

### **Walking Together in Mission: A Map for the Journey: 2019 to 2022**

This map will focus our activities over the coming years. The map lists seven key strategies.

- A. Walking together in mission
- B. Alternative models of ministry that best serve the District
- C. Supporting congregations and ministries in mission and ministry
- D. Supporting congregations and ministries in transition
- E. Planting and renewing congregations
- F. Networking and connections between congregations and ministries
- G. District leadership through the Bishop leading Leadership Teams

You can expect that these seven strategic priorities will be reflected in communications from leaders in the district, and this includes my own reporting.

#### **A. Walking together in mission**

The mission Christ has given us cannot be done alone.

Sometimes as we leave worship on Sundays, we are admonished to go into the world to be God's witnesses. We often feel it is left to us as individuals. And so with limited success we fulfill the call. But our strategic plan instead invites us to walk together in our witness and mission. Together we are strong. Individually we are vulnerable and weak. It will be important that we do not isolate ourselves from the support of others in these coming years.

## **B. Alternative models of ministry that best serve the District**

The institutional church is doing it tough. There is not one traditional denomination which is not shrinking. But there are parts of the church in the western world which are seeing growth.

"Fresh expressions of church" are appearing in Great Britain across the Anglican Church. Communities of faith are springing up over England. Communities which some of us would find hard to recognise as church. But, never-the-less, there are communities where people are coming to know Jesus and growing to be his followers. As one blog put it:

*Fresh expressions are about engaging with those who don't 'go to church' and we've seen that happen through new gatherings and forms of church starting and also through existing churches doing new things.*

Our strategic plan encourages experimentation. We are encouraging alternative models of ministry.

For example we will soon have two examples of lay people authorised for word and sacrament ministry who are being encouraged by their job descriptions to focus on discipleship and outreach rather than just tending the flock. These men are working under the guidance of pastors in neighbouring towns.

There are two congregations currently operating without pastors. One by necessity and one by choice. This has seen lay people step up and learn to do roles that the pastor would normally do. Is this ideal? Not really, but we are learning from this experience brought upon us as a church by circumstances outside of our control.

We look forward to welcoming Pr Peter Ravikumar Livingsten from India, to minister at St Marys and Springwood congregations in the coming year when his visa comes through. Pastor Peter served as an interim at Tuggeranong and Bendigo in 2012 for six months. We pray he might bring new beginnings in ministry to his fellow Indians in the greater Western region of Sydney.

These alternative models of ministry are supported by the district and the LCA New and Renewing Churches

Department.

### C. Supporting congregations and ministries in mission and ministry

Dean Eaton and Noel Due from the new and renewing churches department continue to mentor the sending churches and personnel from congregations including church planters, in Albury, Lifeway Epping, and Woden. The ministry to Chinese people at Lifeway Epping is seeing fruit.

The LCA new and renewing department has also recognized Parkes congregation and Jindera Chapel as 'sending churches'. A sending church serves as the lead partner with a church plant. They serve in an encouraging and equipping role with a new church plant until it is self-funding, self-governing, and self-propagating. If sending churches are not yet big enough to plant a church, they focus on their mission and so expand until they have capacity to plant another community.

### D. Supporting congregations and ministries in transition

Many of our churches will be transitioning from maintenance to mission. This is not an easy change nor is it something that happens overnight. It requires us to focus outward, engaging with people outside the church. Learning to talk about our faith with people outside the church. Leaving behind our natural inclination to huddle and cuddle in the safe place of our church buildings.

This change will make us feel uncomfortable. We will need to learn new skills on how to communicate with people outside the church and this engagement may leave us sometimes feeling ill at ease, maybe even anxious. But the Spirit will enable us.

So it will be important to support each other and look to others – both locally and in the district – as we venture out into the mission space.

### E. Planting and renewing congregations

St Lukes Albury has for some time run the Frontier programme, a training program for missional practitioners, enabling, empowering and releasing people into mission ministry in the local church. They have now completed two years of this programme. The congregation itself has now been transformed, from one which was inward looking, to one which is looking outward and welcoming new people into their ranks.

Not all of our endeavours will succeed. Albury, which is now moving ahead with a second service for new people, had the additional vision to replant Corowa using one of their church planter intern graduates from the Frontier course, supported by ten people from Albury who would join Corowa every week for worship. The church planter moved into Corowa and started well, but then it did not work out. The project was halted and Corowa have now decided to close and join with Albury.

Not all of our church planting dreams will come to reality. But the important thing is that congregations give it a go. It is not success which measures us, but stepping out in faithfulness to Christ our saviour and his call to go.

The Liverpool congregation have stepped out in faith. They have put all their financial reserves on the line to support a pastor for 4 years. They have called Pr Hans Peethala for four days a week. Pr Hans has accepted the call and will spend one day as chaplain to the Army Reserves at Roseworthy Army base nearby. Pr Hans will focus on training lay people in mission and outreach, so that the congregation might once again flourish.

Living Waters Wollongong continue to train people in the 'No Place Left' method of evangelism, using the three circles diagram (look it up on the internet). In this way they are attempting to reach out into the community.

The funding for Joyful Hub Chinese ministry in Sydney has now stopped. The congregation have elected a new leadership team and have asked Francis Leung to be their volunteer leader. Alfred Yau is meanwhile looking for a new ministry opportunity in the LCA.

### F. Networking and connections between congregations and ministries

Three congregations: Trinity Lutheran, Pasadena (SA); Lifeway, Epping (NSW); and Mountainside, Auckland (NZ), all have an Anglo pastor working alongside non-Anglo pastors or evangelists, and all three are seeking to develop a truly multi-cultural approach to church life and local mission. Tanya Nelson, the LCA Executive Officer for Local Mission has invited our district to help provide funding for a Cross-Cultural Ministry and Church Planting Network so that this group of pastors

and church planters can meet together regularly to share and learn from their different but similar situations.

Pr Richard Schwedes the assistant bishop has done much work towards getting the Sydney Future Directions strategic plan up and running. There were two days where representatives from all the Sydney churches came together. One outcome is that Dean Eaton will now spend intentional time with many of the congregations across Sydney.

### G. District Leadership through the Bishop leading Leadership Teams

One of the visions from the strategic workshop was that, out of the bishop's district office, new people would help with implementing **walking together in mission**. The position of **Assistant to the Bishop - Mission and Ministry** was developed. Currently we envisage rather than one person be employed, a team of people work together in the position part time. This position is still in the development stage.

### Concord House Fund

**None** of the above would be possible without the Concord House Fund. Since our last synod, Concord House was sold and some funds invested in high return options with the remainder in low risk investments. These funds are currently generating about \$450,000 per annum. This income has been used for mission endeavours across the state.

- Bennelong Sydney Asian Mission – **Pr Alfred Yau** (*funding ended in December 2019*)
- Lay Worker Grant – Epping Lifeway - **Alex and Annie Duarte**
- Congregational Website development costs– LCA and NSW
- NSW Review and Strategic Plan costs
- Albury Church Planter – **Malcolm Hall**
- Dubbo, Gilgandra Support of Pastor – **Pr Joseph Graham**
- Belconnen Pastoral Support – **Pr Ian Rentsch**
- Mission Facilitator and Church Planter – Woden – **Jacob Traeger**
- Sydney Strategic Plan costs–

### Sydney Future Directions

- “No Place Left” - **Evangelism Training - Wollongong**
- Men’s Shed funding – **Tuggera-nong**
- Pastoral Support - Wollongong to enable focus on mission – **Pr Erik Braunack-Mayer**
- Asian Church Planter *Chinese Speaking* - Lifeway Epping - **Wilkinson Hu**

We thank God that the original vision for Concord House has finally been realised.

### New District Office and Bishop’s move to Sydney

The new District Office was officially opened on the 3<sup>rd</sup> of November 2019 with 49 people in attendance. The office staff love the facility and are very happy in their new location.

I want to publicly thank our two enthusiastic staff Russell and Kaye. They are people who express the love of Jesus in how they do their work every day and are a joy to work with. We are collectively trying to live out the call to mission in our office setting, and have invited other local office workers to join us for morning tea and a coffee on occasions. We already have had opportunities to share the Gospel.

In early September 2019 Jenny and I shifted to Sydney. We have settled into the new manse which has proved such a blessing. The bishop’s manse was dedicated the day DCC first met in the new office nearby, on the 29<sup>th</sup> of November 2019. Jenny and I have visited many of our congregations together. And without her I would not be enjoying my work as much as I have.

May God give his blessing to the work of our district, it’s pastors, church workers and people as we **walk together in the mission**, the mission that he has given us, to share our Lord with the world!

Pastor Robert Bartholomaeus  
Bishop LCANSW District



<sup>1</sup> See Michael Moynagh’s book ‘Being Church Doing Life: Creating gospel communities where life happens’

## Local Mission



Dean Eaton

*Congregational local mission renewal and new church planting*

### Looking Back

New local mission advances have occurred during this period through the development of sending churches, missional communities, mission renewal training, the Frontier training facility in Albury and the alignment of District mission strategy to the LCA NSW Strategic Plan.

### Sending Churches Established

- Lifeway Epping
- St Luke’s Albury
- Immanuel Woden ACT

The LCA New and Renewing Churches department have now approved the following NSW congregations to become part of the Sending Church journey training in 2020.

- Central West Lutheran Parish (St Paul’s Parkes, St Peter’s Orange)
- Bethlehem Lutheran and Chapel (Jindera).

Potential Sending Church Cohort:

- Greater Sydney Cohort of many congregations

### Church Plants Update

- 2 locations in church planting team formation phase: Albury, Canberra
- 2 locations in church planting activity - Lifeway Epping (Newcastle Re-Pot, Epping Cross-Cultural ministry).

Consultation and or missional mentoring relationships developed during the period:

Jacob Traeger (Kate), Eva Leung, Wilkinson Hu, Brant Waterson, Gillian Brooks, Merriem Tarning Hoffmann, Alex and Annie Duarte, Alfred Yau, Malcolm Hall, Janet Meiglich, Brant Waterson, Laura Honnef.

### Our Mission Future

The future of mission in the District is all about deepening relationships with God and one another inside and outside the church. The NSW DCC play a role in co-ordinating and resourcing the review, evaluation and development of local mission support. To this end DCC engaged con-

gregational leaders to participate in a review of the mission and ministry of the District which resulted in the LCA NSW/ACT *Walking Together in Mission* Strategic Plan. Through the formation of the *Sydney Future Directions* committee and the District’s more intentional collaboration with the LCA New and Renewing Churches team, local mission review, evaluation and development has now commenced being strategically linked to fulfil various elements of the *Walking Together in Mission* Strategic Plan.

**Aim:** Renew the growth of existing congregations by 100% and plant five new congregations in the NSW/ACT over the next seven years (2020-2025).

### Strategy: Renew and New

#### 1 RENEW: Grow existing congregations

Growth in numbers of people attending worship comes from various sources. How? By assisting congregations in four ways in 2020-21 (see *table next page*).

#### 2 NEW: Plant new congregations

In parallel to the first strategy to grow existing congregations, we

must also develop new ones in new locations. Why? Because new congregations (under five years old) reap the harvest at a significantly faster rate than do existing congregations.

In Australia, existing LCA congregations reap 3% new converts, whereas congregations under five years of age reap up to 33%. How? By assisting congregations in

four ways in 2020 (see table below).

**Dean Eaton**

LCA Mission Facilitator  
and Church Planter Mentor

RENEW: Grow existing congregations		NEW: Plant new congregations	
What	When	What	When
<b>Resources &amp; Communications:</b> Local mission training, promotional and informational materials; articles, films and graphics enabling multi-media, social media and live media.	March 2020	<b>Resources &amp; Communications:</b> Church Planting training, promotional and informational materials; articles, films and graphics enabling multi-media, social media and live media.	March 2020
<b>Equipping:</b> To grow every congregations outreach and reaping capacity through forming at least one missional community during 2020.	During 2020	<b>Equipping:</b> Invite young LCA church planters to be keynote speakers at young adult and other District events. Frontier (Albury) provides an opportunity to grow leaders who can develop every congregations outreach and reaping capacity.	During 2020
<b>Supporting &amp; Mentoring Leaders:</b> Developing local leaders who can develop local mission.	During 2020	<b>Supporting &amp; Mentoring Leaders:</b> Developing local leaders who can develop church plants.	During 2020
<b>Networking:</b> Ask congregations to self-designate as either a Sending Church (that does Church Planting) or a Partner to a Sending Church.	By June 2020	<b>Networking:</b> Ask congregations to become a Sending Church or Partner with a Sending Church by praying, giving and, going.	By June 2020

## Sydney Future Directions



**Pr Richard Schwedes**

Jesus' focus on mission is about reaching people with God's grace and love. This is why having some of our intentional focus on Sydney is important. The population of Sydney continues to grow and develop.

Every month over 9000 people move to somewhere into the Greater Sydney area. 20% of all Australians live in Sydney, that is 5 million people. By 2050 it is expected to be at least 7.5 million. 40% of people living in Sydney were born overseas. Yet for us, Sydney poses some challenges. We are a small church, developed as Europeans moved to the area. The Sydney approach to life is somewhat different to Adelaide and even more different to many rural areas, so the way to undertake ministry and mission will need to differ. As we live out our ministry and mission in Greater Sydney, we definitely can relate to Jesus' words in Luke 10: *'The harvest is plentiful, but the workers are few. So ask the Lord of the harvest, therefore, to send out workers into his harvest field.'* The

work of Sydney Future Directions is about helping us be the light of Jesus in Sydney.

Since our last Synod:

- Dean Eaton from LCA's New and Renewing Churches has been assisting us with two workshops, individual congregation visits and consultations. This work will continue to assist congregations in developing a missional culture so we are better prepared to connect with communities in and around Sydney.
- Our Sydney Directions team has identified some of the issues that affect us in our mission and ministry in Sydney; including dense apartment living, transient populations, three main different areas of Sydney, 'busyness issues', high cost of living and the cost of property.

You are invited to be part of our Sydney Future Directions by:

- Praying for the people of Sydney that they may connect with and know Jesus' grace, love and mercy.

- Pray for our congregations in Sydney as we respond to the contexts we are in, with God's Gospel.
- Encourage people you know in Sydney to develop and continue growing in a relationship with Jesus, through one of our congregations.
- Consider relocating to be a disciple maker and witness for Jesus in the Sydney region.

If you would like to discover more about Sydney Future Directions and the mission opportunities in Sydney feel free to contact me.

Pastor Richard Schwedes  
Assistant Bishop LCA NSW District  
02 9331 1822  
[pastor@stpaulssydney.org](mailto:pastor@stpaulssydney.org)  
Dean Eaton [dean.eaton@lca.org.au](mailto:dean.eaton@lca.org.au)



# Coastal North Region

## St Paul's Sydney

***We live to connect people with Jesus.***

With Sydney being a gateway to Australia, New South Wales and Sydney, we constantly see a diverse range of people connecting with us and Jesus. Over 30% of our people are new to the congregation. There are at least 20 different ethnic communities represented. Some stay for the long term, others are simply passing through, either on holidays or are on their way to find a more permanent place somewhere in our city, state or nation. Some have had a long association with Jesus and the church, others have known little about Jesus or the Lutheran church. The ministry in Sydney is unpredictable, constantly changing and is both challenging and exciting. Focussing on Jesus first is therefore our main priority, so that we keep reflecting His light and love to all we encounter.

Some of the significant highlights over the last Synodical term have been:

- Being a church who emphasises we baptise people of all ages; we have seen seven adult baptisms and 16 children baptisms
- Encountering God's story, through The Story resource for worship series and bible studies which has assisted us in being more biblical literate
- Faith Foundations worship series, which helped some renew and others develop a clearer understanding of the Lutheran faith
- Developing Connect Groups further, including a connect group in the Mongolian language
- Developing relationships with the Good News Lutheran Church in Mongolia
- Supporting an Ethiopian Oromo speaking group who are working towards being a Lutheran congregation
- Meeting and working with other churches in the Sydney CBD for Ecumenical events such as the Reformation 500 events and services, Ash Wednesday services and Bible Society events

- Continuing to provide a meeting place for Alcoholics and Narcotics Anonymous and to connect closer with them
- Working with other Lutheran churches in Sydney to encourage and support young Adults through Engage Days
- Focussing on helping people who come to St Paul's to connect with each other better.
- Increasing our online ministry through our web page, facebook and video sermons assisting people in the St Paul's and wider community to connect better with Jesus.

Please continue to pray for us and where possible connect with us, encourage us and support us and encourage others to connect with us....so that we continue to reflect the love of Jesus to people throughout Sydney and help them to grow as one of His grace filled disciples.

Pastor Richard Schwedes

## Redeemer Narrabeena

***We live to connect people with Jesus.***

Based on the Northern Beaches we continue to work with our sister congregation St Paul's Sydney Lutheran Church to help people connect with Jesus. Over the last Synodical term we have been exploring and trying things to assist us in connecting better with our local community.

Some of the significant highlights over the last Synodical term have been:

- Encountering God's story, through The Story resource for a worship series and bible studies which has assisted us in being more biblical literate
- Faith Foundations worship series, which helped some renew and others develop a clearer understanding of the Lutheran faith
- Meeting together for regular bible studies
- Hosting an Alpha Course where 18 people attended, including 10 people who were not regular worshipping members

- Undertook the LCA's Renewing Missional Communities study
- Welcoming the Finnish community which has led to a regular monthly Finnish-English worship service
- Joining with St Paul's to support Good News Lutheran Church in Mongolia.

Our small congregation continues to explore ways how God is leading us to grow as His disciples and to help others feel welcomed and loved by God.

Pastor Richard Schwedes

## LifeWay Epping & Newcastle

***"God, prepare our hearts for what you have for us next and give us a heart of faith to go where you call us to go. Amen."***

That's been the constant prayer on our lips and in our hearts over the last synodical term at LifeWay. It's been a challenging prayer as God has stretched and pushed us out of our comfort zones and called us to step forward with trust into the deeper waters of the vision and mission he has given us here. It's been an adventurous and messy journey but we are constantly thankful and inspired by the faithful people who are willing to 'have a go' for the sake of the Gospel and let their lives be transformed by his grace. We thank and praise God for:

- the arrival of Pastor Mat and Elise von Stanke and their family to Newcastle
- the growth in the multi-ethnic ministry of LifeWay and the eight Chinese baptisms we witnessed in the past year.
- The additional staffing to support Chinese ministry.
- The writing and recording of five new worship songs by LifeWay musicians. Our first LifeWay Music album "Hope Alive" will be launched in March 2020.
- The revamping of our website and creation of App
- The launch of online streaming of worship via Youtube
- The "Amplify" Prayer conference held up at Newcastle

- The growing links and working together with other denominations in both centres.
- The continued generous support and active participation of mission work at Tang Krang Centre in Cambodia including the funding of 82 annual educational scholarships.
- Our partnership with local Churches and Macquarie University in

funding research and developing a toolkit to help churches do mission and discipleship in Vertical Villages

- the introduction of the Creative Worship Zone for kids at Newcastle (and Epping in 2020)
- refreshing of ACR website (to be launched in 2020).

As we step into this next synodical period and the next adventure of

God with and through his people here at LifeWay, we will continue to pray this same prayer that God's kingdom may come and his will be done on earth as in heaven. To him be the glory.

Pastors Mark Schultz,  
Mathew von Stanke,  
and Mark Simpfendorfer

---

## Coastal South Region

### Good Shepherd Sutherland

Since the last report in 2017, we've taken part in the following celebrations:

- 50 years of Lutheran worship in the Shire (2017)
- 40 Years anniversary of the church building (2018)
- Trialled a Family Worship Service each month, late Saturday afternoon (2018)
- Took part in the 50.500 celebrations
- The Russian Orthodox Church were using our church for services, but have now ceased, due to long distant travel for the priest. They are a faithful and friendly community of people, who would like to continue to worship here again one day.

A team of people went to the LCA/ NSW Sydney Future Directions Church Planting Seminars with Dean Eaton (2019). The team that went still continues to meet and out of that comes the following:

- An ongoing food collection for a food pantry operating at St John Bosco Catholic church.
- Indwelling of the Word.
- Thursday Mornings at Cronulla; walk, coffee at a cafe, Bible reading and prayer.
- Our old mission statement was a little outdated, so it's now been simplified. It's based on our congregation's bible verse from Ephesians 2:8: *'Good Shepherd Lutheran Church – Living by Grace. Growing in Faith. Sharing Christ's Love with all'*.
- Advent Sunday – LLL and Advent activity.

Other small groups continue to meet such as the Ladies Fellowship and Young at Heart. Over the last two years, we've had Winter Warmers / Soup Sunday's with a gold coin donation and the money raised is given to ALWS. I continue to lead an ecumenical worship service at Blue Hills Retirement Village; Prestons (originally set up by pastor Tim Zanker).

Christian care is one of our ongoing core values here at Good Shepherd and this has been shown to many struggling with various illnesses and hospitalisation.

All power, wealth, wisdom, strength, honour, glory and praise be to God; Father, Son and Holy Spirit. Amen.

Report respectively submitted by  
Pastor Mat Eckermann.

### Our Saviour Springwood

Greetings in Christ,

Since the last District Synod the Springwood congregation has maintained their program of Divine Services, fellowship, education, Pastoral care and outreach through Pastor Emeritus Robert Hamann, working under Call; then following further retirement, the serving of the congregation has been maintained by both Pastor Hamann and Pastor Mickan working together under appointment of the congregation.

As I write, the congregation has been advised that its Call, a Call made in conjunction with its neighbouring congregation, St Paul's, St Marys, has been answered in the affirmative, and Pastor Peter Ravikumar Livingsten from Bangalore, South India will serve as our Pastor into the future. His arrival date depends on when the application for a visa to work in this country has been granted by the government. We are

hopeful that he will be present with us for this Convention.

So the Springwood congregation looks forward to a new era with a new pastor, but also with its confession and its practice of the faith in worship and service remaining the same.

For Christ and the Church

Pastor Robert Hamann and  
Pastor Rex Mickan

### Living Water Illawarra

*"Where Love Comes to Life"*, because Jesus is alive amongst us!

The past twelve months here in the Illawarra at Living Water Lutheran Church has been quite special.

With Pastor Erik Braunack-Mayer joining us on secondment from the district for three years has meant we as a congregation are beginning to open up breathing space to further shift from maintenance mode to outreach and evangelism mode.

As the LCA motto goes, *"Lutheran Church of Australia, Where Love comes to Life"*. We come alive as the life of Jesus grows and wells up in us. As we His people are touched and drawn into the hope we have because of Him, our willingness to share this same hope and love with others also continues to grow.

At times though we have felt discouraged, especially when we had to close the Church building due to termite damage to the floor. But the love and goodwill we received from our Salvation Army neighbours who graciously accommodated us as we worked through a new routine and moved into our hall while the entire floor in the Church was replaced, was very heartening and deeply appreciated.

In this period of change and displacement something special has been taking place. Through the faithful prayers of members and our God who is gracious in answering our prayers we are seeing the love of God and the fruit of the spirit at work amongst us. This could not be better said than in the words of a recent arrival to our congregation:

*I really enjoyed chatting with Anna, Karen, Karen and George at church last Sunday, and chatting with Mary-Anne and Wal last Sunday. There is a wonderful feeling of community at morning tea and I really appreciate everyone making me feel so welcome.*

This person has since asked to become a member our small, chiefly migrant, congregation in the growing

City of Wollongong. As we embrace what it means to live Christ's love, grow by grace and share His hope with all, the fruit of this renewal is also washing over and under and through the lives of those we encounter in our work places, on the street, in the shopping centres and over table fellowship in our homes and over a good cup of coffee at Church on Sunday.

The lessons we have learnt are to persevere, keep-on-keeping-on, not to give up. Trust the Lord in all things. Pray continually knowing that He hears your prayers and has promised to answer according to His good purposes. Always keep your eyes on Jesus because faith in Jesus Christ and His provision is the only thing that truly matters.

Romans 8:28 declares: *And we know that for those who love God all things work together for good, for those who are called according to his purpose.*

This is already proving to be an exciting year as we look forward to the ongoing opening-up of God's good purposes amongst us. As always, we thank and praise God for His good and gracious provision.

Pastor Simon Mackenzie  
Living Water Lutheran Church  
Wollongong, Oak Flats, Nowra

January 2020

## Canberra Region

### Good Shepherd Tuggeranong

The Lord is growing Good Shepherd Community Church from strength to strength. We are passionate advocates for an active contribution by all members to Jesus' mission in the church. This is seen in the God-given wisdom and drive of our capable leadership team, in all who are involved in a ministry, and in those who aren't but are still on mission for God in their everyday lives. In all these facets, mission for Jesus is at the forefront of our praxis, either through those called to serve in the area of GROW (within our faith family) or GO (connecting with the community) as per LCA's strategic direction.

During the last synodical term Good Shepherd has become a supporting congregation to our sister church at Woden in its Canberra Church Planting Project. We have also participated in each of the missional series from LCA Local Mission's New and Renewing Churches. Our people are growing in confidence to take their faith to the public through community engagement at occasional events like Southfest, the annual Tuggeranong festival, right through to regular commitments through which relationships can be fostered evangelistically and pastorally.

This is perhaps most poignantly demonstrated in some new opportunities that are, at the time of writing, becoming or about to become established. Firstly, a multi-user ministry

and community hub is being built on-site at Good Shepherd. The catalyst for this was the South Canberra Shed-Night ministry seeking a permanent facility, but the shed building will also allow community engagement to happen periodically throughout each month. We wish to express our sincere gratitude to LCA NSW District Church Board for approving a grant application to make this build possible.

Secondly, Good Shepherd was also recently awarded funding from the ACT Government to establish a community garden on-site. At the time of writing, the initial build has taken place and soil preparations are underway for a planting program to start later this 2019-2020 summer. Initial community interest is already notable, with further community engagement in both gardening and receiving produce to be further developed through the capable leadership of our team.

The vision is to interface the community garden, community shed and the pre-existing weekly Bread Night ministry with residents in our local suburbs of Chisholm and Gilmore, especially with ACT Housing residents in the area. We envision that through the Holy Spirit's ongoing mission work, organic connections across these areas may grow with, through and toward the church for salvation in Christ. A healthy garden may lead to a healthy body, which may lead to a healthy soul.

Above all, none of us expect that a

site build will bring in new neighbours, but relationships with them will. A keynote speaker at a recent conference I attended in Canberra challenged me with the words, "Anyone can love someone with the love of Christ, but the question is, do you truly *want* them the way God wants them?" These words changed my outlook on mission, and I trust they will do so for you too.

God bless,  
Pastor Paul Hannola

### Holy Cross Belconnen

For the past two years Holy Cross has been blessed with having two pastors, Pastor Hans Peethala, who was the full time pastor, and Ian Rentsch, an SMP, employed for 15 hours a week. This has enabled the congregation to:

- Develop its teaching ministry, especially through Lenten studies, studies in the Lutheran Confessions and in Bible studies.
- Explore a ministry to students, particularly those attending University of Canberra. Unfortunately, it proved difficult to continue an on-campus chaplaincy.
- Look for opportunities to connect with the local Belconnen community. Pastor Ian Rentsch has provided a weekly opportunity to meet at a nearby coffee shop.
- Share the worship and preaching responsibilities each week. A

meditative service on Tuesday evenings has given those who either cannot make Sunday services or simply desire a quiet time for reflection, an opportunity for regular worship.

During 2019, the Deacons and leaders developed a mission and ministry plan, which focuses on growing the ministries of fellowship, teaching, service, while continuing to provide a strong worship ministry, with diverse music.

The Playgroup continues to offer a service to the local community and, at times, has attracted up to 30 children, along with their parents or carers.

In the past two years, a group has become active in the Days for Girls organisation and has partnered with former Papuan New Guinea students to offer the program in that country. The entire congregation has supported this service ministry.

Pastor Ian Rentsch

## Canberra - Queanbeyan Parish

### St Peter's Canberra

St. Peter's congregation is over sixty years old. Next year, in 2021, the congregation will celebrate the 60<sup>th</sup> anniversary of the consecration of the church building. It means that through the St. Peter's congregation there has been a continuous physical Lutheran presence and service of the faithful in Canberra as well as of the local communities for the past six decades. The membership generously supports the mission work of the LCA and LCANSW District by reaching out to the faithful as well as to the Canberra community in various ways. As a typical city congregation, we endeavour to support the spiritual need of many visitors and temporary residents. Our congregational life is driven by the Women's Guild. Twice a year an OP shop is organized, a great means of outreach to the local community. Bible studies also draw interest beyond the boundaries of St. Peter's. We are an active member of the ACT Churches Council and we participate in various Ecumenical activities in the Canberra region. We also have regular concerts and art exhibitions, and we contribute to the annual Multicultural Festival thus engaging the local community. Though the congregation is getting on with age, their outreach, support and enthusiasm is unbroken.

As far as the congregation is concerned, the growth in the area of faith and worship is unmistakable. Our view is that faith and Christian commitment is not simply a question of growth in terms of numbers or quantitative growth, but faithful commitment to the Way of our Lord. St. Peter's is a unique congregation in its own right. What counts is how we live out the Gospel in our faith community, in our congregation, and how we can disseminate it with God's help within the wider community of Canberra.

### St John the Baptist Queanbeyan

St. John the Baptist Lutheran Church in Queanbeyan, NSW, is an older congregation than St. Peter's. The congregation consists of a handful of, but committed, members who are determined to keep their church open and have regular worship there. Given the low membership, the members give simple but practical help to improve the quality of life for those who live on their own and need practical help. Basically all the members of St. John's are of retired age. Their main outreach is the Samaritan Purse, a mission to provide the elementary needs of children in the third world. Annually they collect useful items to fill the boxes and when they are ready to box them they invite other Lutheran congregations to help with packing. It is their outreach which is by now an anticipated annual event in the life of St. John's.

Also, once a year, at Harvest Thanksgiving, the congregation makes a food parcel contribution to the St. Benedict's Centre, a shelter for the poor, at Queanbeyan which provides regular meals for them. In their simple and quiet way they carry out their generous works of charity, compassion and Christ-like love for each other and the wider community.

Pastor Gabor Szabo

### Trinity Canberra Finnish

The Holy Trinity Canberra Finnish Church has been serving mainly Finnish immigrants who came in the 1950's -1960's for almost 50 years now. During these decades we have had local church goers who have had a connection to people with Finnish background as well among us. Now we stand in front of the question about people's aging. Our people are overwhelmingly older parishioners, many of them now

more than 80 years of age. Before last year (2019) we had a four year period when God took away 50 people from this already relatively small congregation. Last year, 2019, was easier with only six funerals, thanks to God. Descendants of these original immigrants, the next generations, are not used to going to church. Of course, in these circumstances, we are asking: Where are we going from this point? How long can we go on with a small, mainly ethnic congregation, where the council members and other main responsibility bearers are aging as well?

We have had our regular Sunday services with 15-20 attendants every Sunday. Special events have been more popular. Around the same number of attendances have taken part in a group which has it's meeting every second Thursday. In a prayer group every third Monday we have almost ten people coming together and pray. In recent years we have had very good co-operation with all the Finnish groups in Canberra (Finnish Pentecostals, Finnish School, Finnish Society, Finnish Embassy...). Some of our people are members in these other groups as well. And, after all, there is still in Canberra at least more than six hundred people who count themselves having a Finnish background or some other contact with Finnish language and culture.

We have had lots of work with the aging buildings, both the church and the manse.

At the moment we are planning to go on in the same way, although Pastor's regular visits to Queensland six or seven times a year mean that we can't have a worship service every Sunday.

Pastor Janne Pekkarinen

### Immanuel Woden

To God be the praise, glory, honour and thanksgiving for His continuing presence with us over the past 50+ years!

*"For God so loved the world that he gave his one and only Son, that whoever believes in him shall not perish but have eternal life" (John 3:16 NIV).*

This verse heads the Preamble of Immanuel's newly revised By-Laws under the heading 'God's Invitation' and provides a foundation for Immanuel's Mission:

to be a place where the love of Jesus Christ comes to life, and

to nurture the spiritual growth of each person at Immanuel, empowering our faith community to know Christ more fully and to take bold steps to make Christ known.

Currently in a period of vacancy, Immanuel looks back to our time with Pastor Robert and Jenny with fondness and love, our being richer for their ministry and service amongst us.

Following their departure, a period of perceived vulnerability amongst members on a number of fronts was voiced, and put before the Lord, in words of confession and pleas for mercy.

Prayers are being answered.

We continue to receive and welcome many new people who simply walk through the door while we farewell others due to diplomatic, military, job and life-stage moves.

Our Board of Leadership for 2020 that comprises a blend of younger and older members, our office and small groups/network staff and our many volunteers generously contribute a wide range of gifts and skills to the ministry of Immanuel.

Dennis Obst (retired Pastor) has offered to serve part-time at Immanuel, and Prs Terry Unger, Will Frost and Ian Rentsch have each led our worship during the vacancy.

Our Mission Facilitator and Church Planting Leader, Jacob Traeger, has stepped up in a most capable man-

ner. Authorised for Word and Sacrament ministry at Immanuel, Jacob is showing great gifting and aptitude for his future as a Church Planter while continuing to lead reaching out to others through Missional Communities.

Thank you, Heavenly Father, that an encouraging mix of younger and older members are walking together in your love, and that more and more people are engaging with people who are on their journey in getting to know your beloved Son, Jesus.

Ward Westphal, Chairperson  
January 2020

## North West Region

### North West Region

Since last synod, the pastoral vacancies in Gilgandra/Dubbo and Central West Parish have been filled. Pastor Joseph Graham was installed in Dubbo in February 2018 and Pastor James Leach was installed in Parkes in February 2019. We welcome them and their families to the zone. We also welcome Brandt Waterson who is assisting with ministry at Orange. We also give thanks to God for Ian Kotzur who has assisted with services in the above vacancies, and now continues to drive from Lavington to assist Griffith/Leeton with pastoral care. Thanks also to Pastor Erik Braunack-Mayer who assisted at Griffith/Leeton in 2018.

During the last 2 years, this zone has been severely impacted by drought, especially north of West Wyalong. While most members are not on the land, the whole community is severely affected by droughts and a significant number of businesses either close, or need to let workers go, which compounds the impacts. Drought is different to other natural disasters in that it creates a long, slow drain on resources and energy. This can be very tiring and wearisome long-term. It is also a reminder that we are not God. He is the one who is in control. But it makes many in the community question and doubt if God really cares and if he really knows what he is doing. This creates a real challenge for ministry that encourages people to trust in Father, Son and Holy Spirit, when this is becoming less popu-

lar. Please continue to pray for these communities.

On a more positive note, a number of conversations have been sparked in the zone around missional communities and church planting. We look forward to seeing how God may be using this to grow disciples in our district.

Pastor Darren Kupke,  
Regional Pastor

### Temora Lutheran Community Church

In 2018 the congregation joined with the Walla Walla and Wagga Wagga congregations to commence a 2-year Grow Coaching journey with LCA Grow Ministries. We had already started a monthly service focussed on young families. The coaching and training helped us not to just focus on young people, but to value all ages, and, more importantly, to develop and strengthen the relationships between the generations. A real transformation came about when we did an Easter activities day during Lent 2019. This was based on the Grow Ministries resource 'Generations in Faith Together' (GIFT). The transformation came as new relationships formed by people of all generations working alongside each other on various craft activities. This was followed by our church picnic at Pentecost, which included intergenerational team games that were a lot of fun. Overall, this journey has been challenging at

times, but has brought about some excitement and a very different feel to the congregation.

Other activities included the 40<sup>th</sup> anniversary of The Open Door Bookshop in Temora in October 2018. It had been planned that Bishop James would preach and unveil a plaque at this event, but plans were changed following his death the week prior. We have also started producing a quarterly newsletter, which is sent out to parishioners, along with the NSW District *Contact*. The Friday afternoon youth group continues, and they are really enjoying some upgrades to the hall, such as air conditioning and heating.

A musical family has started a band to lead services at Trungley Hall. This has helped relieve some pressure on our aging, long term musicians. Finding lay readers at Trungley Hall is become an increasing challenge. This has led to more combined services with Temora in pastor's absence. Trungley Hall also received some grants to bring the local community together to help support each other during drought. This included purchasing of meat for the Christmas parties, and providing free entry for a recent Elvis, Dino and Cash tribute event held in the hall. More events are planned for 2020.

At the time of writing, we are exploring the option of partnering with a sending church, in a hope to become more missional, and support those in mission, as we become more proac-

tive in making disciples who make disciples.

### **West Wyalong Lutheran Church**

The West Wyalong congregation and building both turned 50 years old in 2018. This was celebrated at a thanksgiving service in September. As the congregation ages, a number of members are no longer able to attend services. Attendance at fortnightly services is regularly 12-15 people, which is still significant, and more than some congregations in our District/LCA. A slight adjustment in the Temora parish has meant that now only one Sunday of the month is an afternoon service, with the 3<sup>rd</sup> and 5<sup>th</sup> Sundays now being held in the morning. This change has been appreciated by the congregation.

Pastor Darren Kupke

### **St Paul's Tamworth**

Weekly services continue to be held in Tamworth with steady numbers attending. We are blessed to have two members licensed to provide holy communion and a diverse group of lay readers to support them.

Peter Madirazza, Chairperson

### **Central West Parish**

At the beginning of 2019 we installed Pastor James Leach as pastor of our parish and in June we installed Brant Waterson as Discipleship and Outreach Coordinator.

### **St Paul's Parkes**

This past year at Parkes has seen us begin our journey as a sending church through the New and Renewing Churches. We have been actively searching ourselves both corporately and personally to look at ways we can reach out into the community to share God's love.

In April we had a blessing of the seed, soil and water service which we held at a farm. We enjoyed a time of prayer and sang a couple of hymns, and we shared a roast meal with around 75 people from the local community.

In October a small team did the Walk my Way challenge from our church building to the Dish and we raised over \$2500 for Australian Lutheran World Service.

Throughout the year we have been

given the opportunity to reach out to various people affected by the drought with financial assistance, money donated to the LCA Disaster Relief Fund. For this we and our community are deeply grateful.

We are looking forward to seeing the ways God uses us into the future and the directions he takes our congregation.

Pastor James Leach

### **St John's Forbes**

We are a small but strong congregation who worship together on a weekly basis. We regularly meet after church at the local services club for coffee and fellowship.

Jennifer Purdie, Forbes

### **St Peter's Orange**

At Orange we have had the privilege of having Brant Waterson who has been authorized to preach and distribute communion. Brant regularly visits our members and reaches into the community providing many different people with love and support as the opportunities arise.

Pastor James Leach

### **Dubbo Gilgandra**

Dubbo and Gilgandra is a small parish in numbers, with two congregations, one preaching point; and 50-70 people with a great passion for Jesus.

Joys:

- The Lord has provided! Especially regarding dedicated members, serving the congregation and showing God's love to one another in peace.
- We have numerous small groups happening on a regular basis including monthly men's breakfast (~3-10), monthly Lutheran women (~8-15), fortnightly/weekly Bible study groups both in Dubbo and Gilgandra (~1-10), weekly ladies coffee (~3-8), weekly morning prayer time (2-6), and 4 weekly Shed Night (>20) Monthly fellowship group (6-10)
- We have had 5 baptisms and 4 first communions and 4 confirmations over the past 2 years
- Dubbo North Primary School where we help with scripture and run a breakfast once a week for the children

Challenges:

- Members moving from the area or becoming very busy, particularly the younger families and individuals (university/work/retirement)
- Living in a drought affected community
- Distributing funds to those suffering in the drought
- Aging congregational members (their care) and engaging the younger people of our parish
- Many Dubbo congregational members are approaching retirement

Plans for the future:

- To keep living out our baptisms, witnessing to the Gospel, encouraging and caring for each other, and receiving God's grace
- Pray and explore what we might look like in 5, 10 years' time

Thanksgivings:

- All our members and the faith and skills God has given us
- New people that steadily keep appearing
- Gilgandra's ecumenical church family
- God's blessings he keeps showering on us
- Our communities we live in and opportunities God has given us to serve them

Petitions:

- The Holy Spirit's guidance, support and encouragement now and toward the future
- Continued ministry through the Gilgandra book shop
- That our church can reconnect with those baptised who we don't see anymore, both in families and lapsed members
- We are a blessing and are blessed through our relationship with Dubbo North Public School
- Spiritual growth of all of our congregations particularly guidance for the younger members

God's peace be with you.  
Pastor Joseph Graham

# Riverina Region

## Wagga Wagga Parish

### Bethlehem, Wagga Wagga

Wagga Wagga, together with Walla Walla and Temora, have been participating in a Grow Coaching Cluster. Led by Grow Ministries, we have been considering how to be more intentional with our cross-generational ministry where members (young, old, and in-between) grow and learn from each other. We have found the presentations engaging, challenging, and encouraging. To learn beside fellow congregations have been an added bonus as we learn from each other's experiences.

Earlier this year we celebrated 50 years as a congregation, which was formed after the merging of the former congregations of St Paul's and Our Redeemer. We enjoyed a wonderful luncheon while we looked back at a great collection of old photos, letters from pastors who had served us in the past, and historical documents.

We seek to foster a strong relationship with the Lutheran School, which was established by the congregation back in 1982. We regularly welcome each year level in Sunday worship and volunteers love to cook pancakes for every student on Shrove Tuesday.

### Bethlehem, Milbrulong

Milbrulong continue to meet fortnightly. While the numbers may be limited at times, the atmosphere is always friendly and welcoming. They enjoy meeting with the people of Wagga Wagga at the annual parish picnic, which Milbrulong hosted this year.

Pastor Stuart Kleinig

## Walla Walla Parish

The Walla Parish, geographically positioned between Wagga Wagga and Albury, is comprised of two congregations: Salem (Alma Park) and Zion (Walla Walla). We are served by our full-time pastor, Dan Mueller, who was placed under graduate assignment in 2017, with his call being regularised in mid-2019.

We have many **joys**. Our greatest joy remains when God gathers our congregations at weekly worship to strengthen and equip us for mission through word and deed. Recently, Zion congregation has embarked on the LCA Grow Ministries 'Grow

Coaching' journey, which we have found extremely helpful and fruitful. We are striving to intentionally invite *all* age groups to participate in congregational life e.g. a number of young people now regularly serve in music worship teams, and we are actively encouraging faith at home. We are learning to see where God is at work through and in our community, as we try new mission activities. Such activities have included a successful initiative to welcome refugees to our community. Of course, trying new ideas can bring criticism and grief as we experience change.

Being predominately a farming area, we face **challenges** related to drought and bushfire. Fortunately our immediate area has (so far) been spared from fire — though we have been regularly blanketed in thick smoke, and many of our members have assisted with nearby fires. We need good autumn rain, and we trust in God our Creator and Sustainer to provide in His time and strengthen us as we patiently wait.

We keenly anticipate the **future** God has prepared for us in Christ. We are currently embarking on a three year strategic plan, with each year given a single word focus: *urgency, equipping, releasing*. In 2019 we have sought to increase the sense of *urgency* for our mission of proclaiming the gospel. This has involved entering into a mission partnership with St Luke's (Albury). We intend to encourage and support them in their church planting endeavours as we are able, and this in turn is beginning to invigorate efforts in our own local mission field. In 2020 we will begin intentionally *equipping* and empowering our people for God's mission work locally.

We look forward to walking together with you in God's saving mission work — proclaiming the death and resurrection of Jesus Christ, our Lord. "Thus far has the LORD helped us." (1 Samuel 7:12).

Pastor Dan Mueller,  
January 2020

## Burrumbuttock Parish

During this past synodical period the parish commemorated three congregational 150<sup>th</sup> anniversaries. The first was at St Peter's Lutheran Church Gerogery on the 5<sup>th</sup> November 2017, combined with a tree planting to commemorate the 500<sup>th</sup> anniversary

of the Reformation. The second was on the Jindera Green for the Jindera Lutheran Church and the Jindera town's 150<sup>th</sup> anniversary on the 30<sup>th</sup> September 2018. The third was at a full Trinity Lutheran Church and Hall at Bethel on the 30<sup>th</sup> June 2019.

St John's Lutheran School, Jindera also celebrated 150 years of continuous Christian education in 2018. It is the 2<sup>nd</sup> oldest, continually open Lutheran school in Australia. Each anniversary was an opportunity to thank God for his faithfulness over the years to his people, and his service through them in the world. It will be Burrumbuttock's Holy Cross Lutheran Church's turn in 2038!

Gazing ahead, the parish is looking forward this year to engaging with the LCA's Department of *New and Renewing Churches* to help the Jindera congregation become a Sending Church. We hope to see how God, through His Word and Holy Sacraments working in His people, can renew His mission in our region.

Pastor Christian Fandrich

## St Peter's Lavington

During the period of vacancy, St. Peter's, Lavington was faithfully served by Pastor Ernie Kiss who had retired to the Albury/Wodonga area. The congregation thank him for this service. Pastor Peter Fuhlbohm was installed August 18 and has been settling into ministry in the congregation and NSW District.

Pastor Peter Fuhlbohm

## St Luke's Albury

Over the past synodical period St Luke's has been richly blessed by our gracious God. In cooperation with the NSW District and the national New and Renewing Churches department, the congregation of St Luke's has been able to employ and initiate:

- A part time Administrator.
- A full time Church Planter.
- A full time Music Director.
- The Frontier programme.

## Frontier

The Frontier missional training programme at St Luke's had the first intake of students in 2018. That year and 2019 saw seven students progress through the training with many of them continuing their study and or

working for congregations in practical missional ministries. 2020 also has another batch of students ready for some exciting missional training. For more information on Frontier please contact St Luke's Lutheran Church Albury.

### Church Planting

St Luke's recognises that mission is not merely an activity of the church but an attribute of God in His mission to the world. In prayerful discernment with God we have as a community,

- Softly launched a new congregation/plant in Albury. Averaging 30 every second Sunday. Of that 30, 12 are new worshippers at St Luke's.
- Raised a core planting group responsible for connecting with the local community through outreach events and relational evangelism.
- Built connect groups/missional communities.
- Lead by Peter Reed our music director, we are developing a music ministry through connections within the Lutheran schools in the area.

### The Future

As a community in Christ Jesus, St Luke's looks forward to being led by the Holy Spirit to continue to bring the salvific light that is Christ to all those living in darkness. These good works in Christ are helped through partnerships of faith such as the one between St Luke's and the Walla Walla parish. We all look forward to the future blessing our gracious and faithful God has for us.

Malcolm Hall, Church Planter

### St. Paul's College, Walla Walla

'Consider the Other' was a focus theme for St. Paul's College in 2019 where students were challenged to think about what it means, and put into action within their own contexts. It has been wonderful to see students embrace these themes through Care Group focus and Student Representative Council led initiatives such as Farmer's Day, Harmony Day and Dolly's Dream. The theme was further demonstrated through other initiatives in various subject areas where students applied learning skills in raising funds and goods for chosen charities as well as giving of time in volunteer service as well as participation in an annual student service-learning ex-

perience in Cambodia.

The Apostle Paul says in Philippians, *"Therefore if you have any encouragement from being united with Christ, if any comfort from his love, if any common sharing in the Spirit, if any tenderness and compassion, then make my joy complete by being like-minded, having the same love, being one in spirit and of one mind. Do nothing out of selfish ambition or vain conceit. Rather, in humility value others above yourselves, not looking to your own interests, but to the interests of others"* (Philippians 2:1-4). These words express fully the intent behind Consider the Other and as one may reflect on the activities of the school community, it becomes apparent that all are involved in ministry in some way or another just by their presence in this school. It reminds me how much of a privilege it is to be involved with St. Paul's College every day with the opportunities to participate in conversations, hear stories and marvel at the wonderful ways God is working in students as they grow.

Pastor John Borchert

### Albury Lutheran Aged Care

There's a popular saying that goes something like this, 'How do you eat an elephant? Answer: one bite at a time. Starting my work as a Chaplain at Albury Lutheran Aged Care (LAC) was, and is, still very much like eating an elephant. To say that this year has been a challenge would be an understatement. Even though I've had many years chaplaincy experience (Air Force, Toll), being an Aged Care Chaplain is another dimension altogether:

- the complexity and enormity of aged care ministry
- my dual role as chaplain and pastor to staff and residents, and
- working in such a large facility as LAC

Up to my commencement of work in January 2019, LAC Albury had been vacant for over two years. I would like to acknowledge the endless and tireless work of Angela Uhrhane who took on the role to keep pastoral and spiritual care happening during this vacancy. Not to mention the help and support of Debbie Lieschke and the support of the local Lutheran pastors and retired pastors who offer and provide worship services and pastoral care during the vacancy. A big thank you to you all.

A large part of the pastoral and spiritual life at LAC is worship. On average there are three worship services each week at the three sites. There are, on average, four times that 'Hymns we love' are held at each site.

Worship services are not the only services we provide. In an aged care facility, grief and loss has a significant effect on staff and residents. At all three sites, Memorial Services are held bi-annually so family members, residents and staff can bring some closure and remember the life of their loved ones. We also hold ANZAC Day and Remembrance Day services at all sites, and these are well supported by residents and staff and with the willing help of Australia Defence personnel.

So, what else do we do? We visit. We visit new residents; residents who are sick and who need someone who has the time to sit and listen to their worries and problems. We also visit residents for no other reason that their door was open and just wanted to say 'hello'. We also visit residents who can't attend worship services and bring church to them by offering them in-room communion. We also talk to the staff and if needed provide a confidential listening ear if they need help and support.

This is just a snippet of the work we do to offer and provide pastoral care to the residents and staff of LAC.

Pastor Darryl Mattner

### Henty

The Henty Parish continues to worship regularly in all three congregations, Culcairn, Henty and Pleasant Hills. After a two year vacancy, in January 2018 bishop James Haak installed our new pastor Kees Sturm.

In November of 2018 St. John's Congregation Pleasant Hills celebrated their 135<sup>th</sup> anniversary of the congregation and 130 years of the church building. Although St John's is only a small congregation, we welcomed many visitors who joined in our celebrations including bishop John Henderson who was our preacher that day.

We give thanks to God the Father, Son and Holy Spirit for all that He has done and continues to do for us here in the Henty parish.

Pastor Kees Sturm

## District Church Council



**Liz Eckermann**

The time since the last Synod in September 2017 has seen a number of significant changes take place.

As directed by Synod, the structure of the District Church Council has been changed to nine members, with election or appointment being more skills based, with consideration given to the member's location and gender.

Pastor James Haak joined our District to take up his role as Bishop and was installed at a special service held in Canberra on 21 January 2018. Unexpectedly, our Lord called him home ten months later, and our Assistant Bishop, Pastor Robert Bartholomaeus, stepped into the role of Bishop, guiding and leading the District through this difficult time. He subsequently accepted the call to be Bishop, and has now relocated to Sydney. Pastor Richard Schwedes was then elected to the role of Assistant Bishop and Pastor Christian Fandrich to Pastor Member of DCC.

During this term, Thea Weber found it necessary to resign from her position on DCC and only recently, Ann Robertson entered the Lord's rest following illness. We thank God for the gifts which they so willingly used

in service to DCC and to the church.

Following consideration of various locations for the new District office, property at 20B Lexington Drive, Bella Vista was purchased and fitted out, and a suitable home for the Bishop's manse was purchased nearby.

DCC has been working with Paul Bullen to develop a strategic plan for the District, which included Paul consulting with the various congregations and ministries of the District, and a gathering in February 2019 of various interested parties to further develop the plan. The phrase "Walking Together in Mission" continues to direct the focus and underpin the decisions made by DCC.

Work has also been undertaken on the future directions for the Sydney metro area. Pastor Richard Schwedes has been working with Dean Eaton from the LCA Council for New and Renewing Churches, and the pastors of the area to develop a plan.

Regular reports have been received from LEVNT on the progress of the schools in the District, from Lutheran Aged Care Albury, and the LCA Professional Standards Department. We have also been receiving regular reports from the LCA on the Royal Commission into Aged Care.

Applications for funding and loans for various mission and ministry projects continue to be considered by DCC in light of the District's strategic map. The debt held by Warrambui has now been paid off, allowing the camp to focus on its vital ministry within the District.

The District has again been richly blessed, through generous bequests received from the Estate of the late Joyce Butterfield and the Estate of the late Roy Schulz. We thank the families for these generous gifts. Using these gifts, DCC has set up a fund in memory of the late Bishop James Haak, for the purpose of professional development for pastors and paid lay workers, in theology, governance, leadership, counselling, training and support, and any other training purpose as deemed fit by the Bishop.

In these times of many changes, we pray that God will continue to guide and bless our District, always giving thanks for what He has done and continues to do through His people here in New South Wales.

Respectfully submitted,

Liz Eckermann

Secretary,  
LCA NSW District Church Council

## District Treasurer



**Bruce Arnold**

The last Treasurer's report to the Synod reported the sale of the former Trinity sanctuary in the Haymarket neighbourhood of Sydney for \$6.38 million, the sale of the bishop's manse at Marsfield for \$1.73 million,

and the execution of a contract for sale of Concord House, Rhodes for \$28.82 million. I am pleased to report that the Concord House sale was finalised in October 2018. These transactions have been transformational, whisking us from under a financial cloud and placing us on a rock-solid financial foundation.

Our first order of business was to show our thanks. We used approximately \$800,000 from the Trinity money to reimburse the other Dis-

tricts for the help they gave us in resolving the Lisarow situation, and we distributed a thanksgiving dividend to all of the congregations in the District (these were reported to the last Synod). With the finalisation of the Concord House sale, we transferred an additional \$2.3 million to the General Church, fulfilling the 2015 Synod's decision to "tithe" the proceeds.

We have also applied some of the proceeds to replace the facilities we sold: new premises for the District Office (\$2.5 million, including the fit-out) and a new manse for the bishop (\$1.8 million). We also used our new-found liquidity to repay the debt owed by Warrambui Retreat and Conference Centre to the LLL; we will be considering at this Synod convention a similar equity injection into St Paul's College Walla Walla. The rest of the proceeds have been

invested in a balanced portfolio, including cash, an ethical equity fund, and a wider index-based investment in the Australian and international equity markets. While the returns on a balanced portfolio can vary from year to year, over the long haul this investment strategy is more likely to generate a higher income stream to be spent on mission.

But this is so much housekeeping. The real issue is what should we **do** with all of this money? How do we spend this treasure, in a way that cannot be destroyed by moth or rust, nor stolen by thieves?

With the luxury of sufficient funds, we have disbursed almost \$950,000 in grants, ranging from church-planting efforts to congregational and district website development. We will continue to be receptive to mission proposals, and are planning

to develop a better way of quantifying the potential value of the initiatives, to ensure that our grants indeed constitute good investments.

But the challenge lies in the financial fate of our congregations. Virtually every congregation in the District can be characterised as “cash-poor but asset-rich”. To what extent should the District be assisting congregations who are running operating deficits due to higher costs and declining offerings? Or congregations whose sanctuaries and manses require essential maintenance or timely upgrades? Is it sensible to embark on new mission projects if our foundation of active worship centres isn't secure?

Again, with the luxury of sufficient funds, we entered into a novel arrangement with the Sydney Finnish congregation, where we are allowing drawdowns against the value of the manse. However, this is an unusual situation: The Evangelical Lutheran Church of Finland is gradually reducing its support, and significant changes to the Finnish congregation are anticipated — in other words, there is an exit strategy in place. But where there is no natural exit strategy, how do the congregations in our District ever catch up, let alone create the breathing space required to support outward-looking mission?

I close with a final bit of housekeeping. Given our financial blessings, we have undertaken to improve the quality of our financial reporting, and have selected a new auditor to help us with the transition. I hope our financial statements reflect this commitment.

In sum, our spending the money with which God has blessed the District is a “quality problem”. Your prayers for discernment and wisdom are greatly appreciated.

Bruce Arnold  
Treasurer

## Investments in Ministry

During the past synodical term, grants have been made to various ministries throughout NSW District and the LCA. These have been made possible due to the sale of Trinity Lutheran Church, Sydney, and Concord House, include the following:

### 2017

- \$8,950 to Finnish Congregation, Bass Hill for choir, website and Sunday School
- \$69,000 per year for 2 years to Epping for support for an Intern
- \$1.86M to LLL to take over Warrambui loan.
- \$38,000 to the NSW District for Review and Planning
- \$90,000 per year for 3 years to Albury to support a Church Planter
- \$20,000 per year for 3 years to Dubbo to support a full-time Pastor
- \$25,000 per year for 2 years to Belconnen to provide Pastoral Support
- \$12,000 to Church of St Lawrence for combined Luther concert
- \$23,600 to Warrambui for MCDF Loan forgiveness
- \$11,850 to Albury congregation for Asbestos removal

### 2018

- \$52,500 per year for 4 years to Woden to support a Church Planter
- \$60,000 to LCA Archives for digital scanner
- \$8,950 to Finnish Congregation, Bass Hill for choir, website and Sunday School
- \$10,000 to Sydney Future directions for facilitator
- \$15,000 to Sydney Future directions for Sydney strategic plan
- \$66,000 to LCA for Synod cost reduction
- \$3600 to Wollongong for No Place Left training

### 2019

- \$24,000 to Tuggeranong for Men's Shed ministry
- \$43,875 per year for 3 years to Wollongong for Pastoral Support
- \$200,000 over 3 years to Lifeway for Asian Church Planter
- \$10,000 to Sydney Future directions to implement Renew Mission 2020 plan
- \$6000 to Pastors' Wives retreat to support retreat costs

The LLL continues to make funding available to congregations for mission projects. The following grants were made over the past synodical term:

### LLL Mission Stimulus Funds

#### 2017

- \$25,000 to Albury for FRONTIER a mission practitioner training program

#### 2019

- \$25,000 to Lifeway for Vertical Village project

### LLL Mission Resources Grants

#### 2017

- \$5,000 to Port Macquarie for a sound system
- \$5,000 to Epping for video equipment
- \$4,400 to Tuggeranong for conference fees

#### 2020

- \$6000 to St Mary's for office equipment in new manse

# NSW District Finances

<b>Lutheran Church of Australia, NSW District Statement of Financial Position 31 December 2018</b>		
	<b>2018</b>	<b>2017</b>
	<b>\$</b>	<b>\$</b>
<b>ASSETS</b>		
<b>CURRENT ASSETS</b>		
Cash and cash equivalents	24,388,115	3,981,650
Trade and other receivables	198,818	105,205
Other assets	257,888	-
<b>TOTAL CURRENT ASSETS</b>	<b>24,844,821</b>	<b>4,086,855</b>
<b>NON-CURRENT ASSETS</b>		
Trade and other receivables	183,674	219,575
Investment in Warrambui	4,187,531	4,041,918
Property, plant and equipment	33,414	3,166,671
<b>TOTAL NON-CURRENT ASSETS</b>	<b>4,404,619</b>	<b>7,428,164</b>
<b>TOTAL ASSETS</b>	<b>29,249,440</b>	<b>11,515,019</b>
<b>LIABILITIES</b>		
<b>CURRENT LIABILITIES</b>		
Trade and other payables	52,790	131,221
Employee benefits	72,235	62,530
<b>TOTAL CURRENT LIABILITIES</b>	<b>125,025</b>	<b>193,751</b>
<b>NON-CURRENT LIABILITIES</b>		
Employee benefits	11,681	9,644
<b>TOTAL NON-CURRENT LIABILITIES</b>	<b>11,681</b>	<b>9,644</b>
<b>TOTAL LIABILITIES</b>	<b>136,706</b>	<b>203,395</b>
<b>NET ASSETS</b>	<b>29,112,734</b>	<b>11,311,624</b>
<b>MEMBERS' EQUITY</b>		
Initial contribution and retained earnings	29,112,734	11,311,624
<b>TOTAL EQUITY</b>	<b>29,112,734</b>	<b>11,311,624</b>

## NSW District Finances

Lutheran Church of Australia, NSW District Statement of Profit or Loss and Other Comprehensive Income For the Year Ended 31 December 2018		
	2018	2017
	\$	\$
Other revenue	653,151	537,569
Other income	21,093,458	226,100
Investment income	145,613	2,217,556
<b>Total revenue and other income</b>	<b>21,892,222</b>	<b>2,981,225</b>
Concord House expenses	(215,817)	(136,857)
Camp expenses	(131,206)	(81,466)
Employee benefits expense	(384,060)	(382,095)
Depreciation and amortisation expense	(86,745)	(167,095)
Lutheran Church of Australia	(202,356)	(106,497)
Mission development	(2,656,689)	(2,116,629)
Other expenses	(414,239)	(283,809)
<b>(Loss) for the year</b>	<b>17,801,110</b>	<b>(293,223)</b>
<b>Other comprehensive income for the year</b>	<b>-</b>	<b>-</b>
<b>Total comprehensive (loss) for the year</b>	<b>17,801,110</b>	<b>(293,223)</b>

In accordance with section 60-40 of the *Australian Charities and Not-for-profits Commission Act 2012*, I am pleased to provide the following declaration of independence to the Members of the NSW District Church Council of the Lutheran Church of Australia, NSW District.

As auditor for the audit of the financial statements of the Lutheran Church of Australia, NSW District for the financial year ended 31 December 2018, I declare that to the best of my knowledge and belief, there have been no contraventions of the auditor independence requirements as set out in any applicable code of professional conduct in relation to the audit.

Yours sincerely,



Robert Mayberry Chartered Accountant

Registered Company Auditor No. 185903

**Note:** full NSW District Audit is available in Appendix 1

# 2020 District Budget

Income	2017 actual	2018 actual	2019 unaudited	2020 budget	
From congregations	186,842	192,125	158,235	165,150	1
LLL Depositor donations	26,149	28,771	33,524	32,000	
Mission and Ministry income	36,370	100,386	25,418	40,000	
Bank Interest & Equity Investment	169,096	183,491	165,296	672,000	2
Office and Operation	5,922	23,246	29,697	20,400	
Turning Point Ministries	84,287	139,130	278,901	145,350	
Concord House rent	266,439	321,893	0	0	
Warrambui annual surplus	2,217,556	145,613			3
Other		20,757,565	1,372		4
	<b>2,992,661</b>	<b>21,892,220</b>	<b>692,444</b>	<b>1,074,900</b>	
<b>Expenditure</b>					
LCA Contribution	103,000	200,000	203,800	207,250	
Mission and Ministry	2,179,318	2,784,785	465,316	386,775	3, 5
Asian Mission	98,229	88,314	90,865	0	
Bishop's manse	57,647	48,476	18,900	16,000	6
Salaries & allowances	288,398	305,241	261,910	308,300	
District WorkCover and HRS Fees	9,980	20,047	36,934	21,500	
Travel costs					
Staff	20,717	19,643	22,345	19,000	
Pastor + Committee	11,820	9,442	3,564	5,000	
Office expenses					
Printing and Stationary	20,522	19,274	19,170	16,000	
Legal and Audit	21,184	23,269	26,530	16,000	
Telephone and internet	9,972	7,469	6,299	4,800	
other	36,656	34,518	76,035	47,900	7, 8
Turning Point Ministries	81,465	131,206	118,235	149,200	
Concord House expenses	168,442	308,846	3,644	0	
Depreciation	167,095	90,581	84,725	70,099	
	<b>3,274,445</b>	<b>4,091,112</b>	<b>1,438,271</b>	<b>1,267,824</b>	
<b>Net Profit/Loss</b>	<b>281,784</b>	<b>17,801,108</b>	<b>-745,827</b>	<b>-192,924</b>	

## Notes:

1. 2019 is currently unaudited and may require small audit adjustments to some accounts.
2. 2020 Budget based on an equity risk premium of 3%
3. 2017 includes Warrambui debt forgiveness from the LCA NSW District.
4. 2018 is the proceeds from the Concord House sale.
5. 2018 includes \$2,298,178.48 tithe to the LCA from the Concord House proceeds.
6. 2017 and 2018 include Manse rental costs.
7. 2018 and 2019 include Office space rental at Concord House after Sale.
8. 2020 also includes utilities costs for new office.

## District Administrator



**Russell Veerhuis**

At the time of writing we have now been in the new District Office for a little over 6 months and a lot has happened in this Synod term. During the last term we extended the settlement of Concord House for 6 months prior to final settlement at the end of October 2018. The proceeds of this sale were tithed to the LCA as per the Synod resolution from the 2015 Synodical Convention. We then continued to rent space at Concord House until the new office was ready to go in mid-July 2019.

During this time the NSW District hosted (and did a great job I might add) the LCA Synodical Convention in October 2018 at Rosehill Gardens in Sydney. A huge thank you to the many volunteers from across the District who served in a wide variety of roles, who smiled and loved our guests, bringing so much joy as they visited NSW.

It was shortly after the General Synod that our Bishop James Haak suddenly passed away due to a heart condition. This was a tough time for everyone across the District, but especially his wife Marie and their family, and we continue to uphold them in our prayers.

Pastor Robert Bartholomaeus was then elevated into the Bishops role prior to being formally elected at a Special Convention of Synod in March 2019. Bishop Robert managed to oversee his congregation at Woden, take on the bishop's duties, and support the District Office staff from afar all whilst still being based in Canberra, until he moved into the new manse at Bella Vista in September 2019. The investment in the new manse was \$1,800,000 and will provide good facilities for our bishops for many years to come.

During this time we moved into the new District Office and it was officially dedicated on the 3<sup>rd</sup> of November 2019. The office was purchased for the sum of \$1,891,175 for 205m<sup>2</sup> of office space in Bella Vista.

During this Synodical term we have had three Synods of different sorts, two new bishops, and two major

property changeovers.

The NSW District Office sees their core role to serve and support our congregations and district to be able to do ministry well in their context. Some of these methods of support include assistance with ensuring all congregations have Working with Children and Vulnerable People accreditation up to date and screened along with Professional Standards training. Further, the District Office assists with ensuring all of our SRE teachers who do such a wonderful job teaching across a wide variety of schools have all their accreditation and training up to date. We are aware that many parishes are struggling to find treasurers who can keep pace with the growing demands of national pay roll requirements. The NSW District together with HRS now assists with the pay roll function for a majority of parishes, taking care of the PAYG tax returns to lift this responsibility of congregation treasurers and make their role easier.

The NSW District has a Disaster Relief fund. This fund has been utilised in the wake of the many bushfires across the state, to support those who have been affected. The fund is not meant to support only Lutherans, but to support those in need in our communities in an easy and efficient manner and show them Christ's love in a tangible way. The NSW District through the LCA Disaster and Emergency Fund has accessed \$258,000 in funding for drought affected communities. This money has and is being distributed through congregations and teams of people on the front of these drought affected communities. The love, support and encouragement that continues to be shared through stories of support in difficult times is often overwhelming.

The LCA Communications NSW Congregation Website Project has been coming to an end, with the majority of our congregations now operating with new interactive vibrant websites. The last group to make this journey is actually the District itself, so keep an eye out in the next few months when we will launch a new website that makes information and resources easy to find.

Finally as I write this, I would like to honour the legacy of Ann Robertson. Ann had served on the NSW DCC

for the past 9 years, and many of you would know her as the DCC came and visited your congregations. Ann had an incredible servant heart, and gave so much of her time to support the NSW District and myself in so many ways. She always served with a smile, and yet carried so much gentle wisdom and knowledge. Her legacy in this District through things she has done will live long past her time on this earth. Thanks Ann, you will be missed.

In conclusion from the NSW District Office team, if we can help you in any way to support your congregation/parish or team in your ministry context, please give the District Office (Bishop Robert, Kaye and Russell) a call, we are here to support you.

**Russell Veerhuis**  
Administrator

# Warrambui Board



**Neal Mason**

On behalf of the Warrambui Board, I'm pleased to present the following report for Synod 2020.

Since the last general synod, God's work has continued to flourish at Warrambui. Whilst this hasn't been without its challenges, the blessings provided through the forgiveness of debt have lifted a burden on Warrambui's operations and enabled a stronger focus on its core purpose - Ministry on behalf of the NSW District.

## Ministry

Following the revision of Warrambui's intern program, a regular intake of interns has been achieved over the past 4 years. This has included dedicated study for interns toward the Certificate IV in Ministry and Theology through the Australian Lutheran College as well as an increased presence within the District. Importantly the program continues to build future leaders within the church and in 2020 has led to our first cooking apprenticeship in hospitality being commenced. The board hopes this will grow the long-term capabilities of young people to pursue careers in Christian camping ministry.

There is also growing interest in Warrambui's intern program internationally, and whilst it is early days, the Board respectfully ask for your support in prayer as we work on what this interest might mean for growing God's church within the Pacific and Asia, and how we might go about discerning and following God's plan in this new initiative.

Warrambui continues to facilitate much of the campsite ministry of TPM which brings opportunity for spiritual support particularly for children and youth from our congregations and elsewhere. This support includes some programmatic support from Warrambui staff and importantly discounted costings allowing the cost for participants to be more affordable. Whilst measuring the ministry impacts of Warrambui is not a simple thing, nor can you really put a number against the work of our Lord and Saviour, the Board has commenced measuring the financial contributions of the ministry elements of Warrambui, to ensure this

continues to grow as a focus for effort and expenditure. For 2019, this contribution was in the range of \$175,000.

## Operations

The overall numbers of bookings reached their highest point in 9 years in 2019 with 151 bookings for the year. This has also seen an overall increase in total camp income to over \$1.3m which is a record for Warrambui. The growth in both revenue and bookings has been a credit to the work of the management and staff of Warrambui over the past 4 years but has also come with an increased cost base with expenses also growing.

Overall the operating conditions for Warrambui have changed during the past synodical term. The maintenance of the village (now more than 12 years old) and the changing regulatory environment in which Warrambui operates, has meant an increase to costs in order to achieve the current revenue. However, the Board believes the increased expenditure, in addition to now accounting specifically for expenditure on ministry related items and the allocation of dedicated funding to capital replacement and reinvestment by means of a sinking fund, means the overall position for Warrambui is better now than it has been in the past 5 years.

Key investments have been made towards the upgrade of the waste water treatment facilities at Warrambui (due for completion in 2020), design for Dome refurbishment - likely to take place in 2021/22 and asset replacement.

The establishment of new partnership with St Pauls College Walla Walla has also been a highlight.

The Board has approved the removal of the pine forest, now at end of life and is also actively considering the long-term opportunities for the quarry which will shortly be reaching the end of its extractive life. Overall quarry revenue is significantly down on previous years, which has impacted on the overall financial position for Warrambui.

## Governance

Over the past term, the Board has met on average 4 -5 times a year, with additional executive meetings taking place on a regular basis. Fol-

lowing the District's NSW Strategic Planning session, the Board set about drafting its own Strategic Plan 2020- 2023 which was presented to DCC in November. Also achieved during the period was full accreditation as a Safeguarding Children organisation, through extensive work on Warrambui's policies, processes and approach to risk. This has seen Warrambui recognised as one of only two child safe accommodation providers within the Canberra region, and has already led to an increased level of interest from tour operators within the children camping market. Importantly this change in governance means users of Warrambui can have confidence that child safety is at the forefront in all that Warrambui does.

By the time of Synod, Warrambui will have farewelled four Board members. Two have already stood down, with the remaining two to leave at the end of their terms in March. Each contribution has been significant, in very different ways. Katie Grey who relocated to Queensland in October was instrumental in reforming the policies and process of the Board and operations at Warrambui, leading to successful accreditation with the Australian Childhood Foundation (ACF). Tanya Cunningham, who many in the district will know, has had a long association with Warrambui, and has been a tremendous contributor in more ways that can be mentioned within the word limit for this report. Pastor Paul Hannola has been our pastor representative for this synodical term and for whom I am grateful for his being able to regularly bring us back to the gospel and focus the Board on the real work of Warrambui - God's work. This in addition to his pastoral care for interns and ongoing mentorship. And finally but by no means least, Rex Packer who in March says farewell to an official role on the Warrambui Board. Over the decades, Rex's contribution to Warrambui has been phenomenal. His passion for doing God's work in the ministry of Warrambui will be sorely missed and difficult to replace.

Warrambui has been blessed to have three new members join the Board during the synodical term. Teresa Heyne, Donald Mclean and Phil Spann. All come with a range of professional expertise and God-given gifts that compliment the skill-

set of the Board. Teresa also assumed the role of Treasurer with the endorsement of DCC and Donald, the role of Board Secretary. The Board looks forward to the appointment by DCC of a Pastor representative.

It was pleasing to see the NSW District able to celebrate Warrambui 50th anniversary during 2019. Events included a focused work camp, dedicated weekly prayers and a weekend camp of praise, thanksgiving, worship and catching up with many friends. Reflecting on the great things that have happened over 50 years through God's work was a particular highlight for the anniversary camp weekend. The Board was particularly thankful to all those in the District who were able to attend over the three days.

### Future Focus

During the upcoming synodical term, the Board aims to grow the Ministry work being done at Warrambui on behalf of the NSW District, firm up the operating position of the campsite with a view to being as efficient as possible, and focus on maintaining and upgrading the physical assets where needed. Of particular importance is the ongoing asbestos risks within the Dome and the need to ameliorate this.

The Board is also focused on ensuring Warrambui continues to contribute, and increase its contribution to the Districts overall asset base, whether this be through growing the level of Ministry work undertaken, or returning more favourable financial outcomes. The Board will continue to work with the District Church Council on the areas required to ensure the Ministry of Warrambui is secure into the future. We hope the District will know that Warrambui is your ministry asset, and the Board will continue to work diligently in the stewardship of Warrambui on your behalf.

Neal Mason  
Chair, Warrambui Board



<b>Warrambui Retreat and Conference Centre</b>		
<b>STATEMENT OF FINANCIAL POSITION AS AT 31 DECEMBER 2018</b>		
	<b>2018</b>	<b>2017</b>
<b>Assets</b>		
<b>Current Assets</b>		
Bank Accounts	994,791	776,596
Trade Debtors	50,096	47,282
Sundry Debtors (Staff)	(9)	(9)
Pre-paid provision Insurance	22,630	22,164
<b>Total Current Assets</b>	<b>1,067,508</b>	<b>846,034</b>
<b>Non-Current Assets</b>		
<b>Property Plant and Equipment</b>		
Land	422,000	422,000
Buildings	6,034,010	6,034,010
Workshop	18,277	18,277
Woolshed & Yards	8,000	8,000
Quarry	525,000	525,000
Infrastructure	342,706	342,706
Facilities	31,419	31,419
Capital Improvements	145,445	123,752
PPE Revaluation	(3,878,352)	(3,878,352)
<b>Total Property Plant and Equipment</b>	<b>3,648,505</b>	<b>3,626,811</b>
Vehicles	59,567	59,567
<b>Total Non-Current Assets</b>	<b>3,708,072</b>	<b>3,686,379</b>
<b>Total Assets</b>	<b>4,775,580</b>	<b>4,532,412</b>
<b>Liabilities</b>		
Account Payables	13,260	7,334
GST Liabilities	24,372	23,104
PAYG Payable (employers)	9,282	7,288
Superannuation Clearing A/C	3,998	3,090
Client Booking Deposits Paid	74,054	63,599
Suspense Account	(41)	-
Unexpended Donations	88,023	23,575
Unexpended Grants	1,400	2,000
Staff Leave Provision	19,002	18,568
Quarry - Trust	354,831	343,935
<b>Total Liabilities</b>	<b>588,182</b>	<b>490,494</b>
<b>Net Assets</b>	<b>4,187,398</b>	<b>4,041,919</b>
<b>Equity</b>		
Capital Contributions	2,224,061	2,224,061
Retained Earnings	1,815,857	(399,700)
Prior Year Adjustment (Balance)	1,552	(14,254)
Prior Year Adjustment (GST)	315	-
Current Year Earnings	145,613	2,229,810
<b>Total Equity</b>	<b>4,187,398</b>	<b>4,041,919</b>

## Warrambui

<b>Warrambui Retreat and Conference Centre</b>		
<b>STATEMENT OF PROFIT OR LOSS</b>		
<b>FOR THE YEAR ENDED 31 DECEMBER 2018</b>		
	<b>2018</b>	<b>2017</b>
	<b>\$</b>	<b>\$</b>
<b>Camp Income</b>		
Accommodation Income	605,483	544,648
Programs	33,075	22,692
Rent - Staff Housing/Utilities	21,975	14,775
Catering Income	605,886	529,441
Miscellaneous Income	4,956	17,034
<b>Total Camp Income</b>	<b>1,271,375</b>	<b>1,128,590</b>
<b>Camp Expenses</b>		
Accommodation Expenses	33,509	24,645
Programs	4,718	1,642
Maintenance	66,094	61,740
Refurbishment Projects	2,341	1,296
Catering Expenses	173,372	169,587
Overhead Expenses	182,779	130,131
Advertising & Promotion	18,179	17,512
Wages, Salaries and Allowances	678,423	613,492
<b>Total Camp Expenses</b>	<b>1,159,414</b>	<b>1,020,044</b>
<b>Other Income</b>		
Extraordinary Income	-	1,917,274
Donations	3,433	3,118
Quarry	46,445	127,003
<b>Total Other Income</b>	<b>49,879</b>	<b>2,047,395</b>
<b>Other Expenses</b>		
Quarry Electricity	2,828	2,464
Quarry Development	11,805	7,605
Retreat Hut Expenses	1,594	1,396
<b>Total Other Expenses</b>	<b>16,227</b>	<b>11,464</b>
<b>Extraordinary Expense</b>		
Revaluation of PPE Expensed	-	(85,333)
<b>Total Extraordinary Expense</b>	<b>-</b>	<b>(85,333)</b>
<b>Net Profit/(Loss)</b>	<b>145,613</b>	<b>2,229,810</b>

**Warrambui Retreat and Conference Centre**  
**INDEPENDENT AUDITOR'S REPORT TO THE DIRECTORS OF**  
**WARRAMBUI RETREAT AND CONFERENCE CENTRE**

**Opinion**

I have audited the financial report of Warrambui Retreat and Conference Centre, which comprises the statement of financial position as at 31 December 2018, the statement of profit or loss for the year then ended, and notes to the financial statements, including a summary of significant accounting policies and managements' assertion statement.

In my opinion, the accompanying financial report presents gives a true and fair view of the financial position of the entity as at 31 December 2018, and of its financial performance for the year then ended.

**Basis for opinion**

I conducted my audit in accordance with Australian Auditing Standards. My responsibilities under those standards are further described in the *Auditor's Responsibilities for the Audit of the Financial Report* section of my report. I am independent of the entity in accordance with the ethical requirements of the Accounting Professional and Ethical Standards Board's APES 110 *Code of Ethics for Professional Accountants* (the Code) that are relevant to my audit of the financial report in Australia. I have also fulfilled my other ethical responsibilities in accordance with the Code.

I believe that the audit evidence I have obtained is sufficient and appropriate to provide a basis for my opinion.

**Emphasis of matter – basis of accounting**

I draw attention to Note 1 to the financial report, which describes the basis of accounting. The financial report has been prepared to assist Warrambui Retreat and Conference Centre to meet the directors' internal financial reporting requirements. As a result, the financial report may not be suitable for another purpose. My opinion is not modified in respect of this matter.

**Responsibilities of management and those charged with governance for the financial report**

Management is responsible for the preparation and fair presentation of the financial report in accordance with the financial reporting requirements of the applicable legislation and for such internal control as management determines is necessary to enable the preparation and fair presentation of a financial report that is free from material misstatement, whether due to fraud or error.

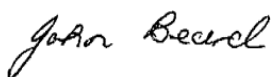
In preparing the financial report, management is responsible for assessing the entity's ability to continue as a going concern, disclosing, as applicable, matters relating to going concern and using the going concern basis of accounting unless management either intends to liquidate the entity or to cease operations, or has no realistic alternative but to do so.

Those charged with governance are responsible for overseeing the entity's financial reporting process.

**Auditor's responsibilities for the audit of the financial report**

My objectives are to obtain reasonable assurance about whether the financial report as a whole is free from material misstatement, whether due to fraud or error, and to issue an auditor's report that includes my opinion. Reasonable assurance is a high level of assurance, but is not a guarantee that an audit conducted in accordance with the Australian Auditing Standards will always detect a material misstatement when it exists. Misstatements can arise from fraud or error and are considered material if, individually or in the aggregate, they could reasonably be expected to influence the economic decisions of users taken on the basis of this financial report.

A further description of my responsibilities for the audit of the financial report is located at the Auditing and Assurance Standards Board website at: <<http://www.auasb.gov.au/Home.aspx>>. This description forms part of my auditor's report.



John Beard

Registered Company Auditor 15775

22 Hensman Street LATHAM ACT 2615 Dated this 24th day of April 2019

## Turning Point Ministries cont.

Please continue to pray for this vital ministry of the district.

The Camping Team now has eight members, who all bring amazing passion and experience and we continue to seek God for all He is and has for TPM.

- Dion Jaeschke – Chairperson
- Brianna O'Keeffe – Vice Chair
- Peta Bennett – Secretary & TPM

Administrator

- Russell Veerhuis – Treasurer
- Andrew Sharp – Warrambui Liaison
- Megan Parsell – Hospitality
- Ps Darren Kupke – Pastor Representative
- Cameron Veerhuis – TPM Admin Assistant

We press on with all that God puts before us, and we seek His heart-beat in all we do.

Respectfully submitted  
Dion Jaeschke

Chairperson - Turning Point  
Ministries Camping Team



**TURNING POINT**  
MINISTRIES

# Turning Point Ministries



**Dion Jaeschke**

Turning Point Ministries: *Faith filled events, growing disciples of Jesus Christ.*

It is an honour and a joy to serve the church as a volunteer through Turning Point Ministries (TPM).

TPM functions as an important ministry to children, youth, young adults and families at a District level in NSW & the ACT. In that space, TPM serves the church by providing nine Christian camping experiences yearly. The following numbers for 2019, give an idea of the impact and reach we have with the events on our calendar:

The 6 youth/young adults/leadership events in 2019 had 323 registrations, of which:

- 174 individuals attended the 6 different camps in total
- 100 individuals attended 1 camp
- 35 individuals attended 2 camps
- 20 individuals attended 3 camps
- 8 individuals attended 4 camps
- 5 individuals attended 5 camps
- 6 individuals attended 6 camps (including 3 Warrambui Interns)

On top of those numbers

- 154 individuals attended Better Blokes, and
- 30 individuals attended Sisterhood

One particular cultural theme we are noticing, is a strong sense of being 'church family' at camps for so many young people. This may seem obvious, or not a terrifically new idea, however for a good number of our participants, coming from small isolated congregations with very few other youth (apart from immediate family or cousins), camps can be a unique place where they see themselves with other like-minded youth and are free to explore new ways to express their faith. We celebrate this, and believe it is a significant reason why we have so many return participants. One example of this 'church family' idea was seen at a Young Adults Retreat in 2018. After much prayerful consideration and ongoing dialogue via email and phone calls with a Lutheran pastor, a

teenager from an area without a Lutheran congregation asked if they were able to confirm their faith (take the rite of confirmation). What an incredible witness to her friends and co-campers, and also to the power of God working through camps.

Some other highlights for TPM since the 2017 convention:

- the growth, commitment and quality of our volunteer leaders. It is especially exciting to see a good number of young people ready and willing to step up and be trained and mentored into the responsibility of leading on camp;
- the mission and discipleship of TPM camps reaches beyond the Lutheran Church. We have seen a growing number of camp participants from other church denominations and no church background. This has been God's hand at work, as it is not the direct marketing or deliberate intention of TPM. We pray that participants from all walks of life, will hear the gospel clearly at TPM events;
- the growth and strengthening of our biannual Young Adults Retreats, reaching 16-30 year olds. These weekend retreats create a space of 'family', biblical teaching and time-out with God. It appears that our young adults are craving exactly this!

At the end of 2019, we farewelled Zach Storm from the TPM Camping Team. We thank Zach for his service and commitment to TPM over the many years he has been involved as a camper, leader, musician and Camping Team Member. Special mention and big thanks in his self-nominated, honorary role as 'Vice Vice-Chair' of the team. We pray every blessing for Zach as he returns to study, this time in Toowoomba, Qld.

The devastating bush fires across Australia over summer 2019/2020 had a dramatic impact on so many areas of the state with smoke also causing hazardous conditions. This situation and these conditions led the TPM Camping Team to make the difficult decision to postpone our January 2020 camp programs. This decision was made with the concern for the health and safety of all people involved. We have now rescheduled History Makers and Leadership

Camp to the April school holidays. Our hearts and prayers go out to all people directly impacted by the fires, including some of our regular TPM camp families in the Tumbarumba region.

We are very thankful to the LLL for recognising and supporting the value of camping within the LCA through a grant to assist new engagement with the district camping program. We have assigned this grant funding to History Makers camp (for 10 – 16 year old youth), through a discounted registration for first time TPM attendance. Approximately one third of History Makers registrations are in this category, which is very encouraging.

We are continually thankful for a wonderful working ministry partnership with Warrambui and continue to look forward to the blessing of that relationship.

We say a big *thanks* to all the families who entrust TPM with the care and faith of their children while attending our events. It is an absolute joy to see the children and grandchildren, of some past campers and leaders coming along to camps. This is a true testament of the value of Christian camping and the generational impact it is having on faith in families.

Thanks also to our team of almost 50 committed volunteer leaders, helpers and camp planning teams, and those pastors who give of their time in support of our camps. We are so very thankful for these faithful servants who give of their own time, energy and passion to share their faith and grow disciples.

We look forward to all that God has for TPM in the coming years. We will be particularly focusing on:

- continuing to provide a quality camping program that is relevant, impacting, with future focused goals;
- strengthening the discipleship pathways of young people at TPM events;
- exploring consistency of support and teaching between camp, congregation and home.

Finally, without your encouragement, support and fervent prayers, we know that TPM could not possibly exist.

← continued p 30

# St Paul's College Walla Walla



Don Walkley

*'I have come that they may have life, and have it to the full' John 10:10*

It is with privilege and pleasure that I present to you this progress report on the life and times of St Paul's College since last NSW

District Synod.

## Spirituality

As a school established within Lutheran spirituality, St Paul's continues to deliver the message of the Gospel to our community in a variety of ways. Along with Pastor John Borchert, we continue to enhance our Christian ethos and practices within our College community. The ten core values of Lutheran education, encompassing all Lutheran schools in Australia, are central to this intent – love, justice, compassion, forgiveness, service, courage, humility, hope, quality and appreciation.

These ten values are seen and heard throughout our daily experiences in the curriculum, as well as within our weekly devotions.

Each year our students in year 10-12 have the amazing opportunity to travel to Cambodia to explore spirituality through the lives of those living within a very different cultural setting. This experience enables our students to see Christ within a different context and is life-changing for our students.

## Community

260 students – 60 boarders – 65 staff – 3000 SPOCA

Yes, it takes a whole village to raise a child and we have 65 staff who are absolutely focussed on providing the best possible education and care for our students. Indeed, we are blessed to have an amazing staff group that continually searches for ways to ensure optimum learning outcomes and a positive wellbeing for every student.

In 2018 the College once again attained registration to enrol international students, and thus we have commenced a promotion and recruiting campaign to attract students from around the globe, with a particular focus on South American coun-

tries. We believe that both our international students and current students would greatly benefit from rich cultural exchanges. In addition, St Paul's has begun hosting International Study Tours (1-2 weeks) from China.

Parents & Friends ('friend' raising & fundraising): For many years the College Parents and Friends Association has provided invaluable opportunities for our community to connect socially, and to raise funds for various projects. Over the past few years the P & F have hosted a number of functions and have raised over \$75,000 to provide new lockers for students, as well as new machinery and resources for our agriculture and equine programs. We are indebted to the P & F. Our fundraising focus for 2020 is on purchasing more resources and instruments to support and enhance our music program.

The continuing drought across Australia continues to be the focus of our prayers and support for our farming families. There are a number of families who are experiencing, or are likely to experience, financial hardship because of the drought and we are thus working with these families to provide fee concessions.

St Paul's is a school of the NSW District and we are thus committed to continue to connect with congregations throughout the District and build relationship – this is the essence of being Church. To date, we have visited about 9 congregations to introduce ourselves, as well as to get to know the worshipping congregations within our District.

## Curriculum

LaunchED – Spanish – Europe Study Tour

As with all schools in NSW, St Paul's must implement a prescribed curriculum framework and syllabus as promulgated by NESA (NSW Education Standards Authority). But within this framework St Paul's has continued to deliver this prescribed curriculum via innovative and engaging approaches to teaching and learning such as Flipped Learning Pedagogy (Flipped learning is a pedagogical approach in which the conventional notion of classroom-based learning is inverted, so that students are introduced to the learning material

before class, with classroom time then being used to deepen understanding through discussion with peers and problem-solving activities facilitated by teachers); and, LaunchED – a learning environment where two classes learn together with multiple teachers.

In 2019 our College also introduced Spanish as a subject into the curriculum. It is our view, given Spanish is considered one of the top four most common languages spoken in the world, that Spanish offered our students yet another global experience.

Every second year, students who elect to study European history are invited to participate in a study tour to Russia and Germany. Two such trips have been undertaken since last NSW Synod.

## Facilities

The Flexi – The Hub – The Appeal

In 2018, the College opened a new learning facility (The Flexi) providing flexible learning spaces for four classrooms, or two seminar rooms, or one learning theatre, depending on the activity. A wonderful space enabling more opportunities for creative teaching and learning.

This year, the College will open The Hub, another wonderful and modern facility that will provide new learning spaces for our students (especially our HSC students); as well as a much needed improved facility for staff preparation and work spaces.

My sincere thanks to both NSW District and Commonwealth Government for their financial support of these two projects

Finally, our Annual Appeal to refurbish our Chapel is well underway. It is timely to replace the seating, carpet and curtains in the Chapel so as to provide a more comfortable and contemporary space for our Worship and Assemblies.

## Moving forward

During the next period of time our staff will:

- be investigating new education programs such as STEM (science, technology, engineering & maths); as well as a new wellbeing initiative known as Growth Mindsets Strategy
- explore opportunities to enhance

our Christian Studies Programs

- continue to promote the College for new enrolments locally, nationally, and internationally
- confirm a partner school in Madrid, Spain to enable our students to undertake a three months Spanish language immersion program
- introduce our first summer school program in January 2021 in col-

laboration with the College Board & NSW District, discern our next building project, thus ensuring that the College continues to provide the very best facilities for our students and staff

#### With gratitude . . .

As always, I wish to extend appreciation to NSW District Synod; District Church Council; College Board; Lutheran Education Victoria NSW and Tasmania; along with our College

staff, students, and parents, for the ongoing loyalty and commitment to the ethos and tradition of St Paul's.

Blessings & best wishes  
Donald M Walkley  
Principal



St Paul's College Ltd ABN 35 128 398 336		
STATEMENT OF FINANCIAL POSITION AS AT 31 DECEMBER 2018		
	2018	2017
	\$	\$
<b>CURRENT ASSETS</b>		
Cash and cash equivalents	307,402	531,101
Trade and other receivables	594,532	683,567
Inventories	121,777	119,804
Biological assets	87,740	185,040
Investments	350	350
Other assets	95,964	87,236
<b>TOTAL CURRENT ASSETS</b>	<b>1,207,765</b>	<b>1,607,098</b>
<b>NON-CURRENT ASSETS</b>		
Property, plant and equipment	8,931,158	9,264,290
<b>TOTAL NON-CURRENT ASSETS</b>	<b>8,931,158</b>	<b>9,264,290</b>
<b>TOTAL ASSETS</b>	<b>10,138,923</b>	<b>10,871,388</b>
<b>CURRENT LIABILITIES</b>		
Trade and other payables	545,081	692,039
Borrowings	255,968	293,159
Provisions	677,332	612,334
<b>TOTAL CURRENT LIABILITIES</b>	<b>1,478,381</b>	<b>1,597,532</b>
<b>NON-CURRENT LIABILITIES</b>		
Borrowings	1,488,593	1,676,504
Provisions	79,156	95,153
<b>TOTAL NON-CURRENT LIABILITIES</b>	<b>1,567,749</b>	<b>1,771,657</b>
<b>TOTAL LIABILITIES</b>	<b>3,046,130</b>	<b>3,369,189</b>
<b>NET ASSETS</b>	<b>7,092,793</b>	<b>7,502,199</b>
<b>EQUITY</b>		
Reserves	5,018,385	5,018,385
Retained earnings	2,074,408	2,483,814
<b>TOTAL EQUITY</b>	<b>7,092,793</b>	<b>7,502,199</b>

# St Paul's College Finances

St Paul's College Ltd ABN 35 128 398 336		
STATEMENT OF PROFIT OR LOSS AND OTHER COMPREHENSIVE INCOME FOR THE YEAR ENDED 31 DECEMBER 2018		
	2018	2017
	\$	\$
Operating revenue	7,458,234	7,111,379
Employee benefits expense	(5,215,550)	(5,328,344)
Other operating expenses	(2,073,644)	(1,727,362)
Finance costs	(96,735)	(82,253)
Depreciation expense	(481,711)	(520,640)
<b>Operating surplus/(deficit) for the year</b>	<b>(409,406)</b>	<b>(547,220)</b>
Capital income	-	400,000
<b>Surplus/(deficit) for the year</b>	<b>(409,406)</b>	<b>(147,220)</b>
Other comprehensive income	-	-
<b>Total comprehensive income for the year</b>	<b>(409,406)</b>	<b>(147,220)</b>

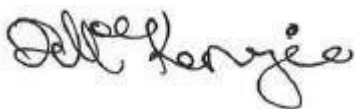
## AUDITOR'S INDEPENDENCE DECLARATION UNDER THE AUSTRALIAN CHARITIES AND NOT-FOR-PROFITS COMMISSION ACT 2012 TO THE DIRECTORS OF ST PAUL'S COLLEGE LIMITED

I declare that, to the best of my knowledge and belief, during the year ended 31 December 2018 there have been:

- no contraventions of the auditor independence requirements as set out in the *Australian Charities and Not-for-profits Commission Act 2012* in relation to the audit; and
- no contraventions of any applicable code of professional conduct in relation to the audit.



**CROWE HORWATH ALBURY**



**DANNIELLE MACKENZIE**

Partner

Dated this 26th day of March 2019.

# Lutheran Education



## Council for Lutheran Education Victoria, NSW and Tasmania

*To be a leading system of Christ-centred innovated schools and Early Childhood Centres inspiring students for Life.*

**Julian Denholm**

We welcomed a number of new staff into the Office at the beginning of 2019. It has been wonderful to further develop the capacity of the office to support schools with the inclusion of Roger Ashcroft – Director: Leadership and School Improvement, Lester Kerber – Director: Business Services, and Teressa Yamada – Business Services Analyst. Ashleigh Hughes ably filled the Operations Officer role during the year.

### Strategic Plan

During 2018, LEVNT revised the strategic plan for the Region, which has been endorsed by both District Church Councils. The new strategic plan is based on feedback obtained from stakeholders and considers emerging risks across the Region. During the strategic planning process, six major priorities (Strategic Intentions) were identified. The human resource allocations of staff within the Regional Office and staff workplans have been aligned with these new priorities.

### Strategic Intention 1

*Develop and implement Lutheran Faith Formation Programs to ensure schools and early learning centres in the LEVNT region are authentic.*

### Connect

Two regionally delivered Connect days have been held, one at Lakeside College and the other at Geelong Lutheran College. Pr David Spike began the Connect sessions in January with 13 staff and they concluded their journey with Session 4 on October 29. Lakeside had 5 staff completing Connect and were led by Fiona Scheffer, the Chaplain at Lakeside.

### Equip

Ten teachers, who had already completed 6 modules of the old Equip, attended three days, two in August and one in October, to complete Equip 1. Equip 1 asks the question,

“Who is God?” and takes the participants on a journey of discovery, utilising a process of the Three Worlds of Text and following their own lines of inquiry and how it connects to a Christian Studies unit within the classroom. These teachers now must complete an ePortfolio to satisfy the final requirements that will gain them Accreditation to teach Christian Studies in a Lutheran School.

### Valuing Safe Communities

Valuing Safe Communities, Version 4 has been rolled out from the beginning of 2019 to our schools and accredited VSC3 trainers have been updated to conduct VSC4. The goal for 2019 was to ensure that all staff in our schools have been updated to the current VSC4 and that each school has access to an accredited trainer.

### Strategic Intention 2

*Drive efficiency by implementing new ways to work within and beyond regional boundaries.*

### Partnership with LEQ

LEVNT has entered a MOU with Lutheran Education Qld (LEQ) for the two Regions to work together in partnership to provide support services to schools of the respective regions using established resources and expertise from the other region to fill gaps where possible. The ultimate goal is to leverage the strengths of each Region for the mutual benefit of the schools and services of both regions, while avoiding duplication of effort.

### Strategic Intention 3

*Develop innovative evidence-based learning within, and between schools and early learning centres.*

### Agile Learning Tours and Development

### Contemporary Learning Tours and Development

During 2019 we continued to engage with LEQ to offer learning tours in a number of locations. We ran several learning tours in Brisbane where we engaged with a range of Lutheran schools who are undergoing a contemporary transformation evident across a number of areas such as pedagogy, learning spaces and leadership. We also ran two tours to Sydney. In these tours we engage with

new schools who are operating quite differently to the traditional model of education, and work with architects who are education specialists to learn about research-based building and learning space design and function as well as visiting a contemporary and agile workplace, that gave us perspective on how the corporate world is already operating. In June we ran our first Melbourne based learning tour where we engaged with several schools both Lutheran and public. We also engaged with the California Learning tour where High Tech High is a major focus of the tour, looking at schools who are doing richly developed project-based learning with the aim of developing students' skills such as creativity, communication and problem solving.

### Coaching Program

Instructional Coaching for teachers has been shown to have significant ongoing positive impact for teaching practice. Other systems have heavily invested in instructional coaching as a core method of teacher development with success. LEVNT is currently exploring a model that could be effective within our own region. To begin this process, in 2017 the Deputy Principal at St John's, Jindera was supported by LEVNT to undertake training as an instructional coach using Jim Knight's method.

In 2018 staff involved in the coaching program further developed skills by coaching staff internally within their school. In Semester 2, 2019 LEVNT provided up to 10 days of coaching support funding for release time to coach staff at St Paul's Henty. This program is running as a trial and feedback pre and post the program is being sought from Principals, coaches and teachers involved to help LEVNT determine what an appropriate model might be that we could offer to other schools in the region.

### Strategic Intention 4

*Nurture a learning culture which is underpinned by the development of people where success is celebrated.*

### Learning Networks

Learning networks continue to engage in sharing and discussion around a range of matters relevant to curriculum, pedagogy, wellbeing and ministry of schools.

Learning Networks commenced

meeting in Term 4, 2019. There is a strong focus on contemporary transformation of schools in these networks and several schools are planning to engage in intensive professional learning programs in 2020.

We are also investigating the option for Learning Leaders from LEVNT schools to engage together in a combination of online and face to face learning with consultants in Human Centred Design and Design Thinking in 2020.

### **Strategic Intention 5**

*Ensure the ongoing development of Governance and Leadership*

#### **Leadership Development Program**

Rather than running separate LDP workshops in 2019, it was agreed to have one workshop for all LDP participants.

The 2019 Leadership Development Program's graduation was held in early November where six Lutheran staff graduated. These graduates come from many different schools in the LEVNT's region and each of them did an amazing job in delivering their final presentation. They have spent the last two years working towards the completion of this degree course while working in Lutheran schools in various roles.

#### **Policy for Monitoring and Reporting Requirements of LEVNT Schools**

The LEVNT Business Committee has reviewed and endorsed a Policy for Monitoring and Reporting Requirements of LEVNT Schools and CLE affirmed the Policy for presentation to schools. It is based on the process used by Lutheran Education Queensland and is considered to be a measured approach to the annual reporting requirements to LEVNT for schools.

One of the Actions within the above LEVNT Strategic Intention 5 is to *"Develop templates for reporting, financial statements, Board and Council Reporting"*. The implementation of this Policy will assist in implementing this Action. The LEVNT office has also developed templates for Budget preparation and Projections, Annual Financial Statements and Reporting to Councils/Boards. These are progressively being offered and rolled out to schools.

### **Strategic Intention 6**

*Work to develop more sustainable models of schools and early learning centres*

#### **Like Schools Partnership**

An initial meeting in anticipation of developing a partnership arrangement between Good Shepherd College Hamilton, Holy Trinity Lutheran College Horsham and St Pauls College Walla was held in 2019. The Principals of these three regional schools met to explore ways that they can work together to further the educational offerings and student outcomes of the three schools. The initial meeting looked at the willingness and logistics of working more closely together, and included consideration of a range of questions including:

- potential students exchanges / camps / farm stays / excursions
- online, video conferencing learning options for senior students and virtual provision re: tutoring etc
- service trips
- ways to strengthen identity and growth in regional/rural areas?

#### **LEVNT Structural Review**

There is significant complexity and ambiguity around the current structure of LEVNT, that has led to inefficiencies in the Regional office operations. During 2018 and 2019 LEVNT sought legal advice on its own structure to work towards best governance practises.

Advice from Moores recommended that LEVNT incorporate to reduce ambiguity, better meet LEVNT's obligations of being an Approved System Authority and reduce the risk for LCAVD and LCANSW Districts from being held accountable for incidents in schools where there is a significant degree of separation.

LEVNT hosted a joint stakeholder meeting in November 2019 where a representative from Moores presented the findings of their investigation into LEVNT's structure to both VIC and NSW DCCs and BLEA representatives. At the meeting there were mixed reactions expressed to this recommendation. Participants at the joint stakeholder meeting were invited to share ideas, comments and concerns in writing with LEVNT to allow the review project to progress in 2020.

#### **Finance and Business Services**

##### **2019 Financial Report**

The draft LEVNT Finance Report to the end of December 2019 is currently being finalised. Grant Income receipts relating to Early Childhood

Centres that is distributed by the System office was much more than expected this year. It has no impact on the LEVNT office bottom line. All Government funding is distributed to schools and levies applied to cover the cost of running the LEVNT System office.

There is still end of year adjustments to be made that will influence interest received and some of the expenditure categories, particularly relating to staff related entitlement provisions. The bottom-line surplus is expected to be positive and better than budget and forecast.

#### **FINANCE MATTERS**

##### **NSW Schools' Financial Update**

LEVNT periodically provides the NSW DCC summaries of the financial performance for the four NSW schools. Data is extracted from the schools' completed audited Annual Financial Statements that are reviewed and approved by their respective school board/council.

##### **LEVNT Financial Risk Management Fund (FRMF) Update**

The LEVNT has developed a proposal to set up a Financial Risk Management Fund (FRMF) that is hoped will assist developing schools to reduce their loan interest expense and provide depositors with a slightly higher interest rate on their deposits. Legal advice has been sought on its implementation and functioning. The proposal has been provided to the LLL for consideration as the proposal is dependent on a drawdown facility on the school's LLL loan being available. The LLL Board reviewed the proposal at their November Meeting and have asked the LLL office to undertake further internal due diligence on the proposal. It will further be discussed at their next Board Meeting in early March. Some further work will be required if and when the LLL approves the proposal before the FRMF is fully implemented.

#### **DISTRICT MATTERS**

##### **LEVNT Office Relocation update**

A decision has been made to relocate the LCAVD office and the LEVNT Regional office from their current building to a new site co-located with a local congregation. The new site will be made available as the St Paul's Box Hill congregation develops the site and moves their place of worship to Box Hill South. It is expected that the new facilities will be available for LEVNT

in 2021/22. The project team are finalising a MOU between St Paul's Box Hill, the LCAVD and LEVNT.

### **Members of Council for Lutheran Education VIC, NSW & TAS**

CLE met on a regular basis over the last two years, in accordance with the By-Laws of the Constitution. Current and recently retired members are:

- Mr Greg Schneider, Chair
  - Mr Mathew Miller, Vice Chair
  - Mrs Lisa Westphal, Secretary
  - Mrs Debbie Bennett, Member
  - Mr Andrew Dowd, Member (Schools Assembly Business Manager nomination)
  - Mr Jeff Gork, Member
  - Mrs Marianne Hammerton, Member (NSW Representative)
  - Dr Peter Hoffmann, Member
  - Pastor Richard Schulze, Member
- \*Mr Ron Asquith Retired Vice Chair (NSW Representative – retired June 2019)

### **School Matters**

#### **St Paul's Lutheran Primary, Henty**

Henty School has experienced a continual decline in enrolments in recent years with enrolments in 2020 expected to be around 30. This is partly due to a larger than normal year 6 group graduating in 2019. The school is working on developing an innovative learning program and promote itself better to the wider community.

#### **St John's Lutheran Primary School, Jindera**

In December 2017 the Little Saints Preschool program became an approved service that made the service eligible to receive government funding under the Start Strong program. After a lengthy application process Little Saints secured ongoing funding for provision of kindergarten services from May 2018.

In late 2019 LEVNT supported a request from St John's Lutheran Primary School for additional financial support based on the school's developed improvement plan. The improvement plan, that includes the crucial need to upgrade the school's facilities, is based on a request for up to an additional \$500K in the form of a loan from the LCA NSW District via the local Jindera congregation. The LEVNT office will continue to work with the school, congregation

and NSW District in progressing this initiative.

### **Wagga Wagga Lutheran Primary School**

Wagga Wagga has continued to ensure a stable enrolment, and this has provided the school with a strong financial performance. It is expected that the school may encounter some challenges in the next few years as an independent secondary school in Wagga Wagga is working on introducing a primary school. This will provide a Prep to Year 12 option for local families.

### **St Paul's College, Walla Walla**

St Paul's College received support from the NSW District in 2019 through the provision of a low interest loan to fund the construction of their new Learning and Teaching Hub. The Hub project was constructed throughout 2019 ready for the 2020 school year.

Based on a recommendation from the LEVNT Business Committee and CLE, the College also received approval for the following loans from the District:

- A Loan to cover fire orders that were necessary in the boarding residence for \$135,912 – with amortised repayments over 10 years at 5% interest rate.
- A Loan to cover Work Health and Safety minor works for \$90,000 – with amortised repayments over 5 years at 5% interest rate.

### **Riverina Review**

Ms Michele Bernshaw has been contracted to conduct a review of the four Riverina Schools. The review is to look at the current challenges that each school is experiencing and work with each school community on developing a vision for Lutheran Education within this area. This review will also include a series of recommendations for consideration by NSW DCC. It is hoped to have the LEVNT funded review completed by April 2020.

In His Service,

Greg Schneider, Chair  
Julian Denholm, Executive Director  
Lutheran Education VIC NSW TAS

## Aged Care Albury



**Phill Edwards**

Chairman Board of Directors Report to Synodical Convention 2020

I report to the members of the LCA NSW District on the work of Lutheran Aged Care Albury

(LACA) as a ministry under the theme "Walking Together in Mission". LACA extends high quality, excellent, consumer-directed care services across all areas of our operations on behalf of the Lutheran Church of Australia.

LACA operating conditions constitute a dynamic environment with continuous and extensive change in all areas of care, regulatory compliance, consumer expectations and through our own reflections on the services that we deliver to our residents and clients. In addition, the Aged Care Royal Commission (ACRC) and media reporting of failures in care services to the aged and those in need of healthcare services across the wider community impact on the morale of staff.

LACA focus on delivering care to the highest standard possible supported by increased efficiencies in services through continuous improvement in facilities through upgrades and information systems modernisation. Where our care services fail our Mission, Vision and Values, LACA institutes remedial action to bring our services up to the standard required by the community, residents and their families. As a testimony to the quality of our managers and staff, care failures are limited and we own these failures as well as our successes.

### MISSION AND MINISTRY

On 20 January 2019 we welcomed in and installed Pastor Darryl Mattner from Finke River Mission (FRM) as our Chaplain and leader of our Pastoral Care team. Darryl's installation service was conducted by Pastor David Grulke of St Luke's Albury and attended by nine Lutheran pastors of the region. We extend heartfelt thanks to Angela Uhrhane and Debbie Lieschke who upheld pastoral care services during the Chaplain's vacancy. A number of retired and current pastors from Victoria and New South Wales conducted worship services for our residents

during the two year vacancy and our thanks are extended to them for their commitment.

Pastor Darryl is developing in this special role ministering to residents and clients in their residences and home spaces. Associated with this ministry is the opportunity to minister to managers and staff as they perform their daily duties. Darryl has the support of Angela and Debbie in delivering pastoral care services. Pastor Darryl's report for 2019 *"In reflection, let us remember why we do what we do. All of us provide loving care and support to our residents and staff. Not because we have to, but because we want to. Our values underpin everything we do in our work. May the motto of LACA - 'His cross is our support' be your support in life as well."*

### SUSTAINABILITY and VIABILITY

LACA is preparing for a major redevelopment of the Arrunga facility through upgrades and new works. LACA have contracted Calder Flower as architects to prepare plans and Census Advisory to project manage the redevelopment. The Development Application (DA) was approved by the Albury City Council on 20 December 2019.

In 2020 LACA celebrate 60 years of service to the Lutheran Church of Australia (LCA), the LCA NSW District and the aged members of our community. This work continues the mission and ministry commenced by the Lutheran Women's League of NSW in 1960.

A recent report on the state of the aged care industry revealed that 51% of facilities recorded an operating loss in the September 2019 quarter<sup>1</sup>. LACA results up to the end of 2019 reflects a similar trend and the Chief Finance Officer (CFO) and Directors are focussed on measures to reverse this trend. During 2019 three small facilities in the region approached LACA take over their operations. Two of the requests were rejected on prudential grounds and the third offer is being examined.

A summary of LACA financial position is enclosed as at 30 September 2019 and the results to the end of January 2020 will be presented to the Synod.

### COMPLIANCE

The Aged Care Quality and Safety Committee (ACQSC) implemented 8 new care standards on 1 July 2019 for the aged care industry. Standard 8 Clinical Governance presents the most challenges to the Board of Governance. Managing Director (MD) Wendy Rocks and the executive management team conducted a review of all organisational policies to ensure these policies comply with the new standards. To enhance governance oversight the Board and Executive Management team are developing reports on clinical indicators for Directors, Managers and staff to review our care results and determine how they are trending over time.

### BOARD RENEWAL

The greater focus on Director skills, competency and commitment across all business sectors in Australia, requires the Board to sustain a blend of experience and contemporary vision on our Board. In September 2018 we welcomed in Laura Thompson a secondary school teacher with extensive experience across the Lutheran education system as a Director. Sadly we farewelled Judy Gray from the Board on 9 December 2019. I thank all Directors, Judy, Laura, Simona, Wendy, Christian and Ron for their commitment and dedication in their contribution to our work and the mission of LACA.

### THANK YOU TO OUR PEOPLE

LACAs strong result and the quality of services focussed through a consistent reflection of our strategic plan, vision and mission is a shared contribution from an outstanding team of individuals who deliver the care and support services we provide. I sincerely thank all our Directors and employees for their contribution to our mission and of course, our residents, clients and stakeholders for their continued support.

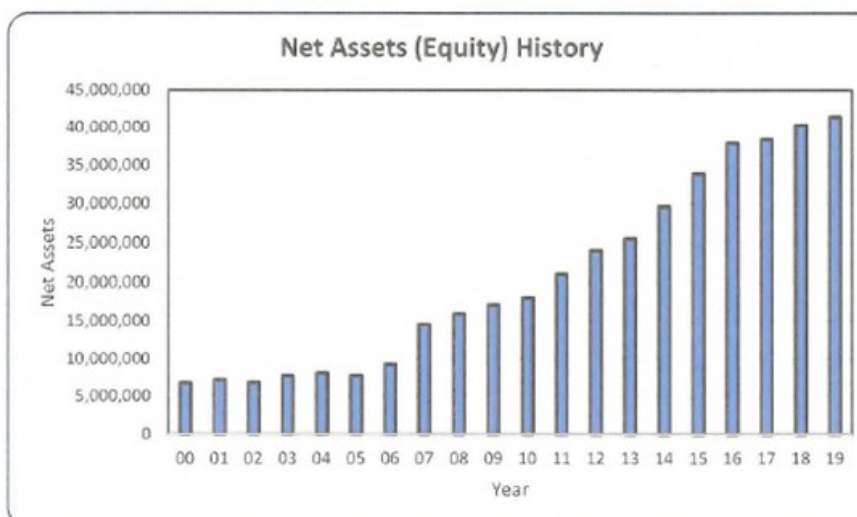
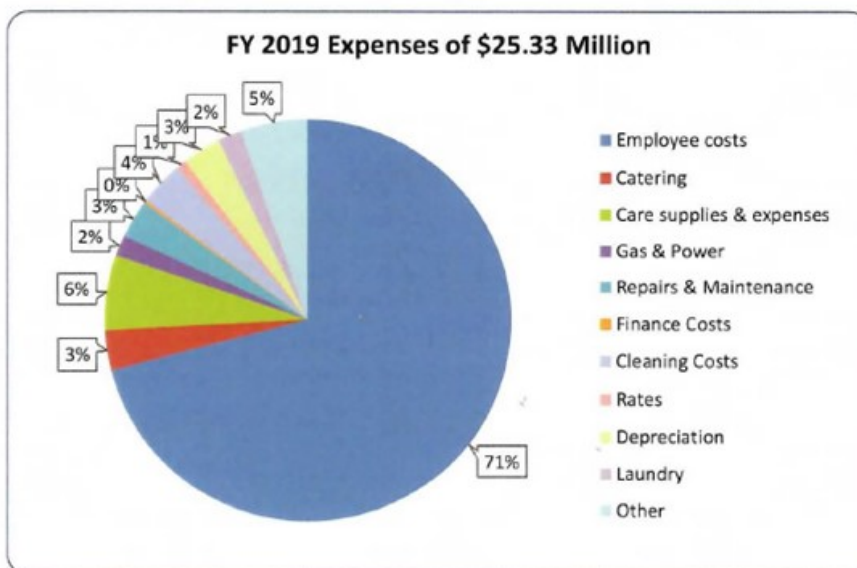
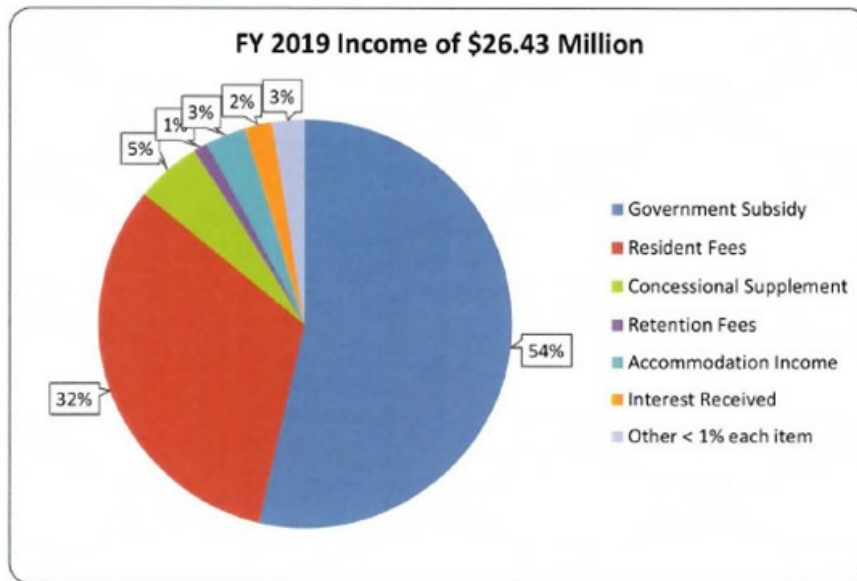
Mr. Phillip Edwards, Chairman  
Lutheran Aged Care Albury  
12 January 2020



## LUTHERAN AGED CARE ALBURY LTD

### Performance and Position Snapshot

### Year ended 30 June 2019



<sup>1</sup> Stewart Brown Aged Care Financial Performance Survey for the quarter ended 30 September 2019

# Aged Care Albury Finances

LUTHERAN AGED CARE ALBURY ABN 95 140 144 798 STATEMENT OF FINANCIAL POSITION AS AT 30 JUNE 2019		
<b>ASSETS</b>	2019	2018
<b>CURRENT ASSETS</b>	\$	\$
Cash and cash equivalents	27,658,709	23,974,398
Trade and other receivables	989,551	889,962
Inventories	18,927	22,485
Other assets	-	153,600
<b>TOTAL CURRENT ASSETS</b>	<b>28,667,187</b>	<b>25,040,445</b>
<b>NON-CURRENT ASSETS</b>		
Financial assets	753,199	750,195
Property, plant and equipment	30,887,808	30,497,663
Investment property	19,227,338	19,195,908
Intangible assets	475,474	440,345
<b>TOTAL NON-CURRENT ASSETS</b>	<b>51,343,819</b>	<b>50,884,111</b>
<b>TOTAL ASSETS</b>	<b>80,011,006</b>	<b>75,924,556</b>
<b>LIABILITIES</b>		
<b>CURRENT LIABILITIES</b>		
Trade and other payables	1,102,086	1,193,382
Provisions	1,845,224	1,755,350
Other	34,107,593	31,013,112
<b>TOTAL CURRENT LIABILITIES</b>	<b>37,054,903</b>	<b>33,961,844</b>
<b>NON-CURRENT LIABILITIES</b>		
Provisions	1,523,278	1,628,307
<b>TOTAL NON-CURRENT LIABILITIES</b>	<b>1,523,278</b>	<b>1,628,307</b>
<b>TOTAL LIABILITIES</b>	<b>38,578,181</b>	<b>35,590,151</b>
<b>NET ASSETS</b>	<b>41,432,825</b>	<b>40,334,405</b>
<b>EQUITY</b>		
Reserves	8,260,176	8,139,810
Retained earnings	33,172,649	32,194,595
<b>TOTAL EQUITY</b>	<b>41,432,825</b>	<b>40,334,405</b>

# Aged Care Albury Finances

LUTHERAN AGED CARE ALBURY ABN 95 140 144 798		
STATEMENT OF PROFIT OR LOSS FOR THE YEAR ENDED 30 JUNE 2019		
	2019 \$	2018 \$
Revenue	26,421,246	25,696,420
Other income	17,388	22,061
Employee benefits expense	(17,972,309)	(16,519,652)
Impairment gains (losses) from financial assets	(10,670)	25,408
Depreciation and amortisation expenses	(779,022)	(742,873)
Finance costs	(53,980)	(61,034)
Catering Costs	(801,141)	(1,137,245)
Cleaning Expenses	(901,030)	(786,330)
Laundry Costs	(478,903)	(404,542)
Gas & Power Expenses	(426,304)	(399,332)
Resident Care Expenses	(1,556,500)	(1,514,927)
Repairs & Maintenance Costs	(800,445)	(855,865)
Rates	(209,251)	(228,814)
Realised Capital Loss on Sale of Land & Buildings	(19,724)	-
Other expenses	(1,322,671)	(1,242,114)
Surplus before income tax	1,106,684	1,851,161
Tax expense	-	-
Surplus for the year	1,106,684	1,851,161
Surplus attributable to member of the company	1,106,684	1,851,161

## **INDEPENDENT AUDITOR'S REPORT**

To the Directors of Lutheran Aged Care Albury and the Secretary of the Department of Health.

### **Report on Lutheran Aged Care Albury's compliance with the Aged Care Act 1997 and the Fees and Payments Principles 2014 (No.2).**

We have audited the compliance of Lutheran Aged Care Albury with the requirements of Part 5 of the *Fees and Payments Principles 2014 (No.2)* (Fees and Payments Principles) for the period 1 July 2018 to 30 June 2019.

#### **Opinion**

In our opinion, Lutheran Aged Care Albury has complied, in all material respects, with the requirements of Part 5 of the *Fees and Payments Principles 2014 (No.2)* for the period 1 July 2018 to 30 June 2019.

#### **Report on Other Legal and Regulatory Requirements**

In accordance with the requirements of the Guide, we are required to report all instances of non-compliance with the requirements of the Act and the Fees and Payments Principles by Lutheran Aged Care Albury that came to our attention during the course of our audit.

As a result of our procedures, no instances of non-compliance came to our attention during the audit period.

#### **Directors' Responsibility**

The directors of Lutheran Aged Care Albury are responsible for compliance with the Act and the Fees and Payments Principles and for such internal control as the directors determine is necessary for compliance with the Act and the Fees and Payments Principles. The responsibilities of the directors include requirements under the Act and the Fees and Payments Principles for the preparation and presentation of the Annual Prudential Compliance Statement (APCS) and compliance with the Prudential Standards contained within the Fees and Payments Principles.

#### **Auditor's Responsibility**

Our responsibility is to form and express an opinion on Lutheran Aged Care Albury's compliance, in all material respects, with the prudential requirements of the Act and the Fees and Payments Principles.

Our audit has been conducted in accordance with the applicable Standards on Assurance Engagements (ASAE 3100 *Compliance Engagements*), issued by the Auditing and Assurance Standards Board and with the requirements of the Department of Health as set out in the Guide to the Audit of the Approved Provider's Compliance with the Prudential Requirements (the Guide). Our audit has been conducted to provide reasonable assurance that Lutheran Aged Care Albury has complied with the requirements of the Fees and Payments Principles. ASAE 3100 requires that we comply with relevant ethical requirements.

Audit procedures selected depend on the auditor's judgement. The auditor designs procedures that are appropriate in the circumstances and incorporate the audit scope requirements set out in the Guide. The audit procedures have been undertaken to form an opinion on compliance of Lutheran Aged Care Albury with Part 5 of the Fees and Payments Principles. Audit procedures include obtaining evidence relating to refundable deposits, accommodation bonds and entry contributions held; refunds of refundable deposits, accommodation bond balances and entry contributions; limits on charging refundable deposits, accommodation bonds; compliance with the Prudential Standards relating to liquidity, records, governance and disclosure; and use of refundable deposits and accommodation bonds.

#### **Use of Report and Restriction on Distribution**

This auditor's report has been prepared for the directors of Lutheran Aged Care Albury and the Secretary of the Department of Health for the purpose of fulfilling the requirements of the Disclosure Standard. We disclaim any assumption of responsibility for any reliance on this report to any persons or users other than the directors and the Secretary of the Department of Health, or for any purpose other than that for which it was prepared. Our report is intended for the directors of Lutheran Aged Care Albury and the Secretary of the Department of Health and should not be distributed to other parties.

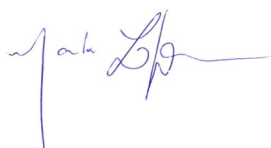
#### **Inherent Limitations**

Because of the inherent limitations of any compliance procedures, it is possible that fraud, error or non-compliance may occur and not be detected. An audit is not designed to detect all instances of non-compliance with the requirements of the Act and Fees and Payments Principles, as the audit procedures are not performed continuously throughout the year and are undertaken on a test basis.

The auditor's opinion expressed in this report has been formed on the above basis.

MRL GROUP PTY LTD

Chartered Accountants



Mark LeCornu

Registered Company Auditor Number 299899 2C Prescott Terrace, Toorak Gardens  
South Australia, 5065 30<sup>th</sup> day of October 2019

# Lutheran Women of NSW



**Charmain  
Lieschke**

May God bless you.

Thank you for the opportunity to let you know some of the ways we serve, share, come together and grow.

Each year we hold a 3 day Retreat at Warrambui Retreat

and Conference Centre in March. Each retreat is hosted by a volunteer fellowship or group of Ladies, which makes for very diverse weekends. It is wonderful to see how God moves the hearts of these host ladies to choose Themes and then focus our attention on God through that theme. In 2018 Albany and Lavington combined to show us how God comes to us in bread (or simple meals) with the theme of 'Who's for bread'. In 2019 Culcairn Ladies showed us the constant-ness of God by comparing the present to the past with the theme 'For I am the Lord, I change not. 2019-51=1968, Retro Retreat'. Each year I am amazed with the way God comes to each of the attendees and moves their hearts.

Our next Retreat will be on March 20-22 2020 at Warrambui, hosted by St. Matthews Central Coast Ladies and have chosen the Theme 'Pathways to the Good Shepherd'

Towards the end of April, we hold our convention to cover the business that we do. Mainly to elect our Executive members and to decide where we will send the monies generously donated. We like to hold this gathering throughout the district, alternating through the regions so we get to meet with ladies of the local congregations. There are updates of projects we support financially and reports of LCA departments, as well as local guest speakers. In 2018 we travelled to Epping with the theme 'SENT' which encouraged us to stretch ourselves, stepping out of our comfort zones for God. In 2019 Henty hosted us with the theme 'Light Keepers, let your light shine before men', reminding us we are to shine so others see God through/in us.

We also want to raise money to support others in need. We do this by supporting various projects. The Mission at Home project for the last two years has been the Kids Breakfast Club at Dubbo and Tuggera-

nong \$6,757 and St Pauls College bus signage. Other projects we have supported over the last two years have been Warrambui Retreat and Conference Centre \$7,132, St. Paul's College Scholarship fund \$3,999 and PNG Women's Co-ordination Fund \$3736. We have also supported the Lutheran Women of Australia Projects with \$51,787

Our next convention will be on April 18 2020 at Wollongong, themed: 'Carried in the shepherds' arms'.

Always we are mindful of the leading of God and we are so pleased that recently we have been appointed 2 spiritual leaders, Pastors Kees Sturm and Mark Simpfendorfer. After a time of no spiritual advisors we are very happy to have them to help us.

There are also regional Fellowship days, one each in the North West, Coastal, Canberra and Southern Zones. These alternate between the local fellowships and are a day of catching up with friends, fun items, possible book/item purchases, local guest speakers. Doing what we like to do and do best, caring for each other, or in modern terms network-

ing. Southern Zone fellowship; On June 2 2018 at Burrumbuttock, under the theme of 'How deep the Fathers love for us'. On June 1 2019 at Culcairn, chose the theme of 'Who am I'

North West Zone fellowship; On September 9 2018 at Dubbo, theme: 'Jesus, my sword and my shield'. On September 29 2019 at Parkes, combined with the church service and had a lunch.

Canberra Zone fellowship; On September 30 2017 at Queanbeyan, theme: 'The Lord's Prayer'. On September 22 2018 at Tuggeranong, theme: 'Be strong and courageous'. On September 21 2019 at Wooden, theme: 'Walk my way - to Nepal'.

Coastal Zone fellowship; on September 9 2017 at St Marys, theme: 'Fit and healthy for God's work'. In 2018 it was cancelled due to National Convention clashing with the date. In 2019 it was also cancelled due to several interruptions.

The Lutheran Women of New South Wales are busy. We attend, on a district level, Convention, Retreat and Fellowship Days. Locally we hold regular meetings, often catering for gatherings, organising gifts at Christmas, and visits to places of

interest.

Our local congregational fellowships meet regularly, holding bible studies, activity days, fundraising activities. Host coffee mornings, and many other ways of gathering to share fellowship, fun and the love we have for God.

While we are busy and capable, we are also disappearing. This is the view that many have of Lutheran Women, even some within Lutheran Women. I don't believe that we are disappearing, but that, as we are finding in other areas of Lutheran life, we may not be advertising that we are here as well as we could. In every congregation there are women who are attending church but are not involved in the official Lutheran Women. I believe we need to change this and let all women in on the benefits of being connected to others. Getting to know that there are Lutheran women in other areas is very exciting. Realising that you are not the only one (or only few), is very encouraging. It helps to motivate us to practice sharing our faith, something that as Lutherans we may not do enough of.

Recently I attended the funeral of my aunt, and although it was a sad occasion, it was a wonderful day reminiscing about her friendly, generous nature, she was always ready to have a cup of tea with a visitor or going to visit with those less able. Stories of her hospitality were in every conversation. The reason I mention these things is that she was a woman who knew who she was. She was a child of God. She knew that God loved her, accepted her, saved her. Because she knew these things, she was eager to share this love with others. It made me stop and think about how I do that, if I do that. Am I so grateful to God for His love and forgiveness, that I overflow with wanting to tell others about Him. I don't have to have the gift of hospitality as my aunt did, I only have to be willing to talk with whom ever God puts before me each day. Ask them how their day is going, listen to the answer, and as the saying goes, They will know we are Christians by our love. Take time to care and to share. Invite someone you know to come with you to the next Christian event you go to.

Warm regards,  
Charmain Lieschke,  
LWNSW President.  
*God loves you.*

# Professional Standards



**Carolyn Kiss**

I want to begin by thanking all of you who have engaged in Professional Standards workshops over these past years and acknowledge congregations who are using the SP3 system on a regular basis to plan safe programs for congregational ministry activities. I'm heartened to hear that whilst some have at first thought it would be 'all too difficult', they have in fact found that by using the SP3 system to support their planning, it has streamlined the process. I continue to encourage congregations/parishes to appoint an SP3 Coordinator to facilitate these processes.

In a seemingly ever changing environment, our LCA Professional Standards Department has had some changes also. Marilyn Wall has now moved on from her role as Training Coordinator with PSD to another position within the LCA. Marilyn's contribution was considerable due to the changes with the training re-structure and re-writing of much of the training materials.

Marilyn also had the opportunity to visit all LCA Districts (including NZ) and visited quite a number of congregations, attending training workshops and supporting the Professional Standards Officers in the Districts.

Another change that is on the horizon is the introduction of Professional Standards Level 1 and Refresher training becoming available as an online unit. This will occur in collaboration with Australian Lutheran College (ALC), making the training available on the ALC's online training platform.

This development has been a work in progress for quite some time and will soon be a reality.

PSD will continue to advocate that 'face-to-face' training workshops are the preferred choice for training to occur, especially as a first time training engagement. The online mode of training will offer those who are unable to readily access 'face-to-face' training an alternate method of completing the required training for their congregational roles.

Following on from the very lengthy and detailed report from the Royal Commission into Institutional Responses to Child Sexual Abuse, there have been 10 recommendations for Creating Child Safe Environments. These have been adopted by the Coalition of Australian Governments (COAG). Religious bodies are also responsible for implementing these recommendations within their organisations. The LCA have set up a Child Protection Project and have employed Mary-Ann Carver as the Project Officer to oversee this work.

There have also been some legislative changes in both the ACT and NSW regarding the reporting of child abuse and the inclusion of clergy as mandated reporters. Across many of Australia's states and territories there has also been the introduction of 'failure to report' laws. These have all been as a direct result of the report from the Royal Commission and it is clear that reporting matters relating to child abuse is something to be taken seriously by us all.

I want to encourage congregations/parishes to be diligent in the use of Application and Screening processes, not only for roles that include direct contact with children and young people, but also because we engage in so many ministry areas that include vulnerable people and these processes need to include those areas of ministry also. Please be diligent also in completing the NSW-District Congregational Audits for Working with Children Checks (WWCC) or Working with Vulnerable People Checks (WWVP). It is important that these are kept up-to-date and for information to be forwarded to Kaye in the District office for validation.

One of the areas of work for the PSD is case management. In 2018/19 in the NSW District, there were a number of files opened. It is a reminder to us all that even in a time of greater awareness, there are still matters that arise, (some that are of an historic nature), of issues that show us that within our church people are hurting because of the actions of others.

The Professional Standards Department (PSD) is here to support congregations/parishes and I encourage you to be in touch with us, even if it's nothing more than for a chat if you are not sure of how to manage something.

A great way to stay in touch with PSD matters is to subscribe to the PSD eNews. You can sign up by going to [lca.comms@lca.org.au](mailto:lca.comms@lca.org.au)

Again, thank you for the work you are doing in your local ministry areas and may you continue to know God's blessings on all that you do in His name, bringing 'God's love to Life'.

I look forward to seeing some of you at training workshops around the District, be they Level 1 or Refresher training.

In His service,

Carolyn F Kiss  
LCA Professional Standards Officer  
NSW District.



# LCA Bishop



**Pr John Henderson**

## REFLECTIONS ON THE CHURCH

***Just as I am — your love unknown  
has broken every barrier down —  
now to be yours, and yours alone,  
O Lamb of God, I come.***

*(LHS 335 verse 6 [TIS 584 verse 5]  
Charlotte Elliot, 1789-1871)*

To the Districts, members, and friends of the Lutheran Church of Australia and New Zealand.

### Our wilderness experience

As I reflect on the church in 2020, I am filled with gratitude for God's wonderful provision and grace. God continues to gather us under the cross of Christ. He patiently cares for us. All we are and have comes from him, and so we resonate with the words of St Paul, 'I will boast all the more gladly of my weaknesses, so that the power of Christ may dwell in me.'

As I reflect on the church in 2020, I am also filled with wonder that, after all these years, we are still here! That the church still exists on earth is a sign that God isn't finished with us yet. Each generation of the church has faced challenges and losses, sometimes catastrophic, as well as gains, which with a few exceptions have tended to come more slowly. History shows that many before us have questioned in their time whether it has a viable future. Despite all those things, here we still are, by the grace of God.

As I reflect on the church in 2020, I see that, in our time, we continue to face difficulties on many fronts, within and without. Can we solve these dilemmas? Can we remain faithful to Christ, be relevant to people in the modern world, and grow and flourish in a rapidly changing and high-risk environment?

And therein lies the rub. This isn't about us, our brilliance, our way, our crystal ball gazing or carefully made plans. In truth, we don't create or sustain the church. Of course, we must read the signs around us, pay heed to the statistics, and find new ways of working. But all that is for nothing if we do not learn to trust God. Remember Israel's 40-year journey through the wilderness. They didn't travel a straight line from point A to point B. They wandered,

apparently aimlessly, until it was time for them to arrive in the promised land. They gave up hope many times, resisting the lessons that God was teaching them. They were homeless and afraid, wandering in the desert surrounded by hostile nations. Sometimes they thought it would be better to go back into slavery than continue as they were. At other times they took matters into their own hands, such as when Aaron built them a golden calf (Exodus 32). Time and time again they sinned to the point of destruction, yet each time God pulled them back. So today for us too, as the people of God, we have this lesson to learn.

The church is God's, and we in the LCA want to reflect that, albeit sometimes very dimly. It's not ours to create or to abolish. God will do with us what he wills. As with the Israelites, God is providing a test, helping us explore what we truly believe, and who or what we truly trust. The question is 'Who, or what, is your God? Who, or what, do you look to when the heat is on, the crisis looms, and the catastrophe threatens?' Will we, like Israel, learn yet to trust him?

As I reflect on the church in 2020, I see that we have everything we need. God gathers us, unlikely candidates as we are. I see that we are just the kind of people, and just the kind of church, you would expect us to be. We have no pretences. We know and confess that we are sinners saved by grace. Christ is our hope. He gives us new life, new birth.

To quote one of our Synod themes, every day we are 'learning to walk again.' God is creating something among us that is holy, beautiful and new. Whatever our external circumstances, and whatever bothers us, we can still be confident of God's commitment to this work, to the salvation of the world, and to us, the people he has called.

## Where we are headed

Since 2000 these have been the themes of our LCA General Conventions of Synod:

- 2000 (Tanunda SA) – Christ our future
- 2003 (Stanwell Tops NSW) – How are they to hear?
- 2006 (Toowoomba Qld) – Living in the light | Shining as lights
- 2009 (Croydon Victoria) – Learning to walk again
- 2013 (Novar Gardens SA) – Where love comes to life
- 2015 (Rosedale Qld) – Where love comes to life
- 2018 (Rosehill NSW) – Faith Freedom Future

It's intriguing that we began and ended the two decades with the theme 'future'. I guess the future is what bugs us most. There can be many reasons for that, and here's some I have seen:

- We can be insecure about the world and our place in it
- We can fear loss of wealth and our comfortable lifestyle
- We can feel that the church has lost its publicly acknowledged place in society – people no longer look to it for ethical and moral guidance
- We can worry that our children and grandchildren are not coming to church, and therefore it might not survive
- We can despair of the changes happening around us and be disappointed when change in the church looks like it is being influenced by the world instead of fighting it
- We can be frustrated that the church isn't moving with the times and so risks becoming 'irrelevant'
- We might not like the way we see things going, and we want someone to blame
- We might want to be part of something successful, and the church doesn't always look successful
- We can be intolerant of the imperfections of others – we want the church to reflect just ourselves rather than reflect the inclusiveness of Jesus in the gospels
- We are tired – we want someone else to take over the running of the church, but we can't find anyone to do it
- We are annoyed that older people

won't let go and let younger ones 'have a go'

So, as I reflect on the church in 2020, I realise that we aren't that different from other people. We live by the same grace and need the same forgiveness and baptismal rebirth as every human being. And that makes the church very special indeed. It is sobering to realise that God's special people are not so very different – they have no short-cut to heaven. We come, just as we are, broken and defeated, and God's love does the rest.

Lutherans teach some quite radical things about this, that being a Christian is not deciding to be a better person, or even deciding to believe in Jesus, difficult though both those things are. When we ask what it is to be a Christian we look somewhere else. Not to ourselves, but to God, in the sacrament of Baptism. In the Small Catechism, which alongside the Bible is our basic Christian handbook, we read that baptism 'effects forgiveness of sins, delivers from death and the devil and grants eternal salvation to all who believe, as the word and promise of God declare.'

This is counter intuitive. When we ask about the church, or about ourselves as Christians, our first tendency is too look inside for evidence of faith and righteousness, or good works. Martin Luther would say that we make an idol of ourselves because when pressed we turn to our own strength instead of to God. Whatever you put your trust in, he said, is your god.

### Salvation

We know not to look inside ourselves for salvation. We must look beyond ourselves, to an external source, to what God promises in baptism. In other words, to the salvation won by Jesus Christ, which he gives freely to the world. The human condition is one of death, and Christ gives life. Therefore, the life of the church relies on the daily renewal provided by our baptism, which 'signifies that the old Adam, with all sin and evil lusts, should be drowned by daily sorrow and repentance and be put to death, and that the new person should come forth daily and rise up, cleansed and righteous, to live forever in God's presence.'

This gets us away from the idea that human progress requires an onward and upward spiral of success. It re-

quires a radical rethink of our position before God. It means we don't come to God just as wounded souls looking for a cure, or hurt people seeking healing. It's more serious than that. It means we can't come to God at all. We are dead because of sin (Ephesians 2:1,5, Colossians 2:13). It must happen the other way around – God comes to us. We must always remember that. Religions seek God, probing for truth and spiritual reality, but because of sin they cannot truly reach beyond, to the reality of who God is. Christians know that it is not we who seek God, but God who seeks those who are lost. God has found us and does more than rescue us. We were dead, just bones, and God has breathed life into us again (see the vision in Ezekiel 13). That's what we mean by resurrection. The water of baptism brings it to us. The Spirit washes us through and through with God's Word, his promise. Baptism, uniting us with Jesus, is the water of life. It's far too flimsy a foundation just to believe in God. Saving faith rests on something far stronger – Jesus Christ, God's only Son, who came into the world to bring it back to life.

What does this mean for us? It means that our insecurities, fears and doubts cannot destroy us, or the church. How long the LCA will continue in its current format, I can't tell you. There are many stresses and strains on us, and I found no crystal ball when I moved into the bishop's office. I would have been highly sceptical if I had! There are as many possible futures as there are people who predict them. Many will be proven wrong, but maybe not all. One thing I can be sure of, however. The church, God's church, will endure.

In worrying about the future, of course, we are worrying about the wrong thing. The future is in God's hands. It is better, surely, to pay attention to the present, this very moment in which we can do something new for God. Life is made up of such moments. We pray, for instance, in the Lord's Prayer: 'Give us today our *daily* bread.' This was the lesson God taught the Israelites when he gave them manna in the desert (see Exodus 16). The present moment, right now, is God's gift to us. The past is already a memory, and the future doesn't yet exist. What we are given is now. In faith we recognise Jesus as the divine 'now' in which we live, move and have our being

(St Paul in Acts 17:28). So, God loves us here, now, in this present moment, just as we are. That's our constant belief, hope and confidence.

### God's work

So finally, as I reflect on the church in 2020, I am not in despair. We don't know the answers to all our problems, but that doesn't mean the cause is lost. It just means we are in that part of the resurrection cycle, of the dying and rising again that is the Christian life. God is at work, bringing new, resurrected life into the world, and that doesn't happen without some pain. It even requires a death, the death of Jesus. We share in his death, so that we may also share in his life.

In the church we measure things differently to the way they are measured in the world. As we strive for 'relevance' in the world, as we grow in ministering responsibly and well under the best standards of behaviour and accountability, as we sort out our differences on who can be a pastor, and as we reshape ourselves to serve in the 21<sup>st</sup> century, let's always keep in mind what really matters – the cross of Jesus Christ and the free forgiveness of sins in his name.

That's why we're Christian and Lutheran, and that's the gift for which we, in turn, will give our own lives, and the life of the LCA, so that others may believe in him.

Pastor John Henderson  
Bishop, Lutheran Church of Australia  
and New Zealand  
January 2020



## ALWS



Jamie Davies

**OVERVIEW**

Australian Lutheran World Service (ALWS) is the aid and development agency of the LCA. Together, we brought love to life for hundreds of thousands of people in need around the world in 2018 and 2019! And here's how:

**CORE PROGRAMS***PNG – Church Partnership*

This unique initiative is a collaboration of ALWS, six other church agencies and the Australian Government, to strengthen the capacity of partner churches in PNG to better serve their people. Funded by the Australian Government's Department of Foreign Affairs and Trade (DFAT), we work very closely with the Evangelical Lutheran Church of PNG. One exciting result to date is that there are now 23 disability hubs based in Lutheran Parishes in PNG offering awareness raising, screening, referrals and other services for families affected by disability.

I had the opportunity to witness firsthand the difference made at Benong Parish, in a squatter community outside of Lae, where hundreds gathered for health screening one hot and humid day. I was so inspired by the women and men at Benong who pioneered this great work for the ELCPNG!

*Indonesia- Centre for Disaster Risk Management & Community Development Studies (CDRM & CDS)*

In cooperation with the LLL, LCA International Mission and others, CDRM & CDS was established to build the capacity of local governments, churches, community groups and organisations to deliver effective programs with a focus on disaster risk reduction. In 2018 we supported 8,522 people, including 738 people living with disabilities, to be more resilient in the face of disasters and a changing climate.

*Cambodia – Empowerment through Self-Reliance*

This program works with communities to understand and uphold their own rights, focusing on sustainable livelihoods, food security, education,

health, advocacy and conflict resolution. In 2018 48,357 people were reached. Australian Lutherans supported 30 village partnerships in Cambodia in 2018, helping villagers move towards independence with roads, community ponds and bridges.

*Burundi – Community Empowerment*

Burundi is one of the world's poorest nations and continues to be gripped by political turmoil and economic instability. The community empowerment program brings healing to people through peace and livelihood initiatives, such as training in improved agricultural techniques. Most of the 3,232 households supported in 2018 reported increased food production, sustaining them through the lean 'hungry' season.

*Kenya – Kakuma & Dadaab Refugee Camps*

In Kenya, ALWS provides care at the camps. In Kakuma in 2018 10,715 newly arrived refugees were welcomed and provided with accommodation and day to day support including food and psychosocial support. Over 90,000 children in refugee camps in Kenya now have access to quality education.

*South Sudan – Rebuilding Livelihoods*

Following protracted conflict and frequent droughts and famine, ALWS enhances food security, livelihoods and quality education for the vulnerable population. In 2018 8,300 people in Jonglei State were supported. We leveraged funds from the European Commission through a matching grant to support an accelerated learning program in schools in Maban and Ajuang Thok Refugee Camps.

*Djibouti – Refugee Assistance Program*

This program serves refugees fleeing war and drought in East Africa and the Middle East, and improves the well-being of 12,119 refugee children by enhancing their ability to safely attend school. In response to the school absenteeism by many girls during their menstrual period, in 2018 the project trained girls and parents to make reusable pads. This saw a significant increase in school attendance.

*Somalia – Supporting the Govern-**ment Education Sector in Jubaland*

Education is one of the most severely impacted services in the ongoing conflict in Somalia. In collaboration with the government and other stakeholders, ALWS supported an accelerated learning program to fast-track 1,000 children who have missed out on education to be at the same academic level as their peers.

*Disability Inclusive Development*

We support the Lutheran World Federation (LWF) and the Action by Churches Alliance (ACT), a network of 151 churches and affiliated organisations including LWF, that work together in humanitarian assistance and development, to raise the profile of disability inclusive development and ensure that those with disabilities are not forgotten but instead included in all programs.

*Child Protection*

We integrate the safeguarding of children in all we do, including screening of personnel, incorporating the voice of children into program design, and using photographs and stories in a suitable and sensitive way. In 2018 we supported the development of a suite of online E-Learning modules for the ACT Alliance to build safeguarding capacities.

**EMERGENCIES**

In 2018, ALWS responded to three emergencies through partners, including:

**PNG** – Together, we helped the ELCPNG and other churches to respond to a devastating earthquake. 58,972 people in 37 villages now have rainwater tanks, and disability friendly pit latrines, and access to counselling services.

**Indonesia** – Through your support, ACT Alliance partners were able to quickly provide lifesaving help including first aid and provision of safe water and sanitation facilities to people affected by the earthquake that struck Central Sulawesi province in September 2018.

**Syria** – Your contributions enable people that continue to be impacted by the crisis in Syria to reduce their vulnerability and alleviate suffering, through provision of baby and dignity kits, safe water, language courses, livelihoods trainings and school rehabilitation.

For more on what you have accomplished with ALWS, please visit [www.alws.org.au](http://www.alws.org.au).

## COMMUNITY EDUCATION

ALWS is committed to taking the message of those who suffer from poverty and injustice to the pews, desks and living rooms of our community. Without the endorsement and support of pastors, district church leadership, and Lutheran schools in the NSW / ACT district, this would not be possible.

In 2018 more than 7,000 students were inspired and equipped to help others. We delivered just over 300 presentations across Australia. In 2019, over 25 NSW / ACT schools, churches and community groups welcomed ALWS staff to pray, share and learn together about our world in need.

We had a wonderful experience acknowledging your love and support at our first ever *Asante Afternoon* in the ACT in May 2019 at Immanuel Lutheran in Woden Valley.

Through school Awareness days, What's My Business curriculum, Refugee sleep-outs, Welcoming the Stranger events, Church presentations and Youth nights, we try to create a better understanding of the plight of many of the world's poorest people and how our Lutheran Church is working through ALWS to empower the least of these to rise from poverty.

Along the way you may have met our Community Action Officer, Vicki Gollasch, Communications Officer Amanda Lustig or myself. We are more than happy to come support your congregation, school or group in its outreach.

2019 was a spectacular year for AL-

WS' Walk My Way initiative. 10,000 refugee kids can now go to school, thanks to the 730 walkers who raised funds through eight energising Walk My Ways across Australia in 2019.

However, we are saving the best district for last: **We invite you to join our first ever WALK MY WAY in the NSW District, planned for Saturday 17 October 2020 in Albury-Wodonga.** Come bring love to life for refugee kids and celebrate ALWS 70<sup>th</sup> Anniversary, born at Bonegilla!

To learn more, go to

<https://walkmyway.org.au/>

## SUPPORT FROM AUSTRALIAN COMMUNITIES

We are most grateful to those members of our Lutheran community in NSW District who donate so generously to help others through ALWS. We recognise that this support extends beyond donations, including the way NSW & ACT churches and schools pray for those in need and endorse our work publicly.

ALWS raised over \$6.9 million in total in 2018, of which \$2.3 million came from the Australian Government through DFAT. In 2019, we raised over \$7.2m in total, with just under \$2.7m coming from DFAT.

NSW & ACT graciously gave \$463,564 in 2018 and our pre-audit records show over 759,000 in 2019 (283,000 of which are bequests).

## STEWARDSHIP OF RESOURCES

ALWS ensures the management of funds is transparent and accountable. ALWS is a signatory to the Australian Council for International Development's Code of Conduct, which requires ALWS to meet minimum standards in governance, manage-

ment and accountability. ALWS has full accreditation with DFAT, is subject to rigorous accreditation review every five years, and has received the charity tick from the Australian Charities and Not for profit Commission.

## THANK YOU

We are most humbled by the generosity shown by the people, schools and congregations of NSW and ACT to serve the least among us. We also give thanks for a supportive and encouraging church leadership, and committed institutions such as the LLL. We couldn't have done it without you!

We are extremely grateful to Pastor Ian Rentsch, of Belconnen Holy Cross Congregation ACT, who serves as Vice Chair of the ALWS Board.

Since coming on board in 2018, I have felt very blessed to be a part of such a talented team and compassionate Lutheran family in Australia.

There is still so much poverty and injustice in our world! In 2020 we will work on ways to stretch each dollar you donate even further in order to have the greatest impact on the lives of others.

Finally, we thank God for working through our church in such a transformational way.

Jamie Davies  
Executive Director



## LLL



Andrew  
Waldhuter

For nearly 100 years the mission of the LLL has been to provide assistance to the Lutheran Church of Australia (LCA) in business and financial matters. This level of support is only possible because of the fantastic ongoing support from our account holders, donors and supporters. This last financial year is no ex-

ception and the following contains highlights and summarises key result areas of this assistance.

### Highlights of the last year include:

- LLL Australia becomes an Authorised Deposit-taking Institution (ADI)
- Legacies and Donations of over \$680,000.
- Depositor balances exceeding \$1.1b.

### LLL becomes an ADI

February 2019 marked a new milestone in the history of the LLL. This transition was celebrated with a Thanksgiving Service at which Allen Kupke, CEO, thanked all the staff members for their dedication and diligence in the lead up to and after the ADI change. For many years, the LLL operated as a Religious Charitable Development Fund (RCDF) with exemptions from the Banking Act and applicable ASIC Class Orders. In 2016, the LLL Board made the

strategic decision to apply to become an ADI and be fully regulated under the Banking Act, meaning the LLL can continue to offer at-call savings accounts in support of the Lutheran Church of Australia and its mission. For LLL customers, there has been no change in day to day operations. For more information on this change please visit [lll.org.au/adi](http://lll.org.au/adi) or call 1800 556 457.

### Financial support to the LCA

Grants paid based on monies held in LLL Permanent Funds continue to grow with a total of \$2.57m of Permanent Fund grants paid during last financial year. These grants are made possible by legacies and donations that have been gifted to LLL Permanent Funds, and Board allocations to support specific LCA ministries.

LLL depositors electing to forego interest by holding non-interest-bearing savings accounts enable the LLL to provide additional benefits to a range of different LCA ministries. A total of \$1.27m was paid to 257 LCA organisations as a result of non-interest-bearing accounts held over the last 12 months.

Special grants totalling \$2.12m were paid to various LCA projects in consultation with the LCA General Church Board.

Administrative services provided to the LCA over the last 12 months are estimated to be worth over \$330k.

**Total benefits and services provided to LCA organisations over the last 12 months ended 30 June 2019 is estimated to be \$9,692,018.**

### Legacies and Donations

A total of \$645,186 was left to the LLL as legacies last financial year from 13 different benefactors. In addition, a further \$42,984 was gifted to the LLL in donations.

Legacies and donations are all added to LLL Permanent Funds, which enable the LLL to provide annual grants to a wide range of LCA ministries.

We thank God for all those people who have been moved to support the LLL in this way. These gifts not only provide a benefit to the Church, but they also form part of the capital base of the LLL, which provides fur-

ther protection to depositors who invest their funds with the LLL.

### Deposits

LLL deposits continue to grow, with total deposits as at 30 June 2019 of \$1,144,652,590, an increase of \$93.8 million in the last 12 months.

LLL Savings accounts are used by the LLL to provide loan funding to approved LCA projects. Funds not used for loans are invested principally with Authorised Deposit-taking Institutions (ADI's) and the income earned on these investments is used to provide additional benefits and services to the LCA. The LLL does not invest any funds in shares or property investments.

### Loans

LLL loans as at 30 June 2019 totalled \$296,610,957, a decrease of \$4.7m from the previous financial year. It is exciting to see that the church is still developing in many areas, with 13 loans totalling nearly \$27 million in Lutheran schools and five loans for more than \$4.5 million in congregations and other church projects approved in the past financial year. The LLL is blessed that depositors' funds are available to cater for these loans, meaning funds do not need to be sourced from wholesale money markets.

### LCA Insurance

Total assets insured through LCA Insurance as at 30 June 2019 were valued at \$4,671,400,000, with 750 LCA organisations as clients. Despite a number of high value claims and site revaluations in recent years, LCA Insurance still continues to strive to maintain cost effective insurance coverage for the LCA.

### Lutheran Tract Mission (LTM)

Last financial year over 400,000 tracts were distributed and there are currently 1110 different titles in stock. Donations received totalled \$65,200 which included a significant legacy of \$25,000 which we especially acknowledge and give thanks and praise to God. LTM continues to update and produce new tracts which can be found and ordered from the LTM website [www.ltm.org.au](http://www.ltm.org.au).

### Regular Electronic Giving (REG)

Current REG statistics are as follows:

- LCA organisations using REG: 274
- Participants contributing via REG: 2,383
- Monthly giving via REG: \$555,369 (over \$6.6 million annually).

A new REG brochure and promotional materials were produced by the LCA, funded by the LLL and were distributed to congregations in early 2019. More information about REG can be found on the LCA website, [www.lca.org.au/departments/ministry-support/finance-administration/reg/](http://www.lca.org.au/departments/ministry-support/finance-administration/reg/)

We encourage everyone to read the LLL publication '*Together in mission*' which provides further information about how the LLL partners with LCA organisations to help bring the Gospel to people in Australia and around the world. *Together in mission* is available on the LLL website, [www.lll.org.au/tim](http://www.lll.org.au/tim). The LLL Annual Report provides a comprehensive financial summary of LLL operations and is available at [www.lll.org.au/about/annual-report](http://www.lll.org.au/about/annual-report)

All thanks to God for blessing the work of the LLL and we pray that He will continue to guide and bless us as we support the mission of the Church.

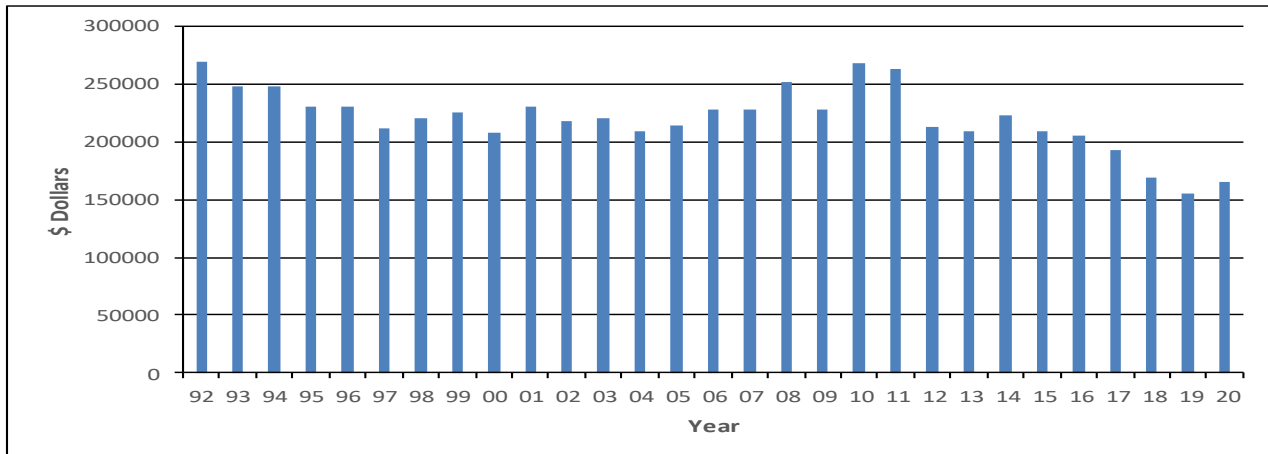
Andrew Waldhuter  
Promotions Manager, LLL Australia



## Contributions from Congregations

Place	Budget							
	2013	2014	2015	2016	2017	2018	2019	2020
Albury	23,000	23,500	24,000	24,360	16,480	200	8,335	10,000
Alma Park	12,000	12,600	13,800	9,000	8,000	7,000	3,000	6,000
Anna Bay	0	In Recess					Closed	
Bass Hill Finnish	1,400	1,500	1,500	1,525	1,545	1,500	1,200	1,200
Bathurst	Closed							
Belconnen	16,000	17,000	18,000	18,500	18,550	17,000	17,000	17,000
Bethel	400	400	400	400	400	300	250	250
Burrumbuttock	1500	0	0	500	500	500	400	400
Campbelltown	1000	3000	3000	3500	3000	2000	2000	2000
Canberra	500	520	0	1,090	560	500	500	500
Canb. Estonian	150	160	160	160	150	150	0	150
Canberra Finnish	0	2,450	0	1,280	1,300	1,000	0	1,000
Central Coast/ Gosford	0	500	600	610	610	600	600	600
Coffs Harbour	500	520	540	556	500	500	500	Closed
Cooma	0	0	0	0	0	0	0	0
Corowa	200	200	200	0	0	0	0	200
Culcairn	4,000	5,250	3,350	4,700	6,000	4,500	4,500	5,000
Dubbo	0	500	550	0	1,050	500	500	500
Epping Chinese	200	0	0	445	0	430	200	200
Forbes	305	500	520	530	540	500	500	500
Gerogery	4,500	4,600	4,700	4,770	4,840	4,000	4,000	4,000
Gilgandra	0	2,220	1,140	1,150	1,150	1,000	1,000	1,000
Griffith	2,000	1,000	1,100	1,100	1,120	1,000	1,000	1,000
Henty	7,000	7,150	7,300	7,500	7,600	6,500	6,500	6,500
Illawarra	2,400	2,450	1,850	3,000	2,575	2,000	2,000	2,000
Jindera	14,500	14,500	15,350	15,580	15,820	13,000	13,000	13,000
Lavington	4,500	0	0	4,230	500	500	500	500
Leeton	1100	600	610	620	630	500	500	500
Lifeway Epping	9,583	14,250	8,250	7,000	7,000	7,000	7,000	7,000
Lifeway Newcastle	500	-	-	-	-			
Liverpool	1,500	1,550	1,600	1,650	1,650	1,500	0	1,500
Milbrulong	0	3,000	0	3,175	1,600	1,200	1,200	1,200
Narraweena	2,000	2,050	2,100	2,130	2,160	2,000	2,000	2,000
Orange	500	520	540	550	556	500	500	500
Parkes	575	1,096	2,036	1,525	1,600	1,600	1,600	1,600
Pleasant Hills	1,650	1,700	1,750	1,775	1,800	1,000	1,000	1,000
Port Macquarie	4,500	3,000	3,000	1,500	1,500	1,500	1,500	1,500
Queanbeyan	600	600	610	620	630	500	500	500
Springwood	1,100	1,120	1,140	1,160	1,175	1,000	1,000	1,000
St Marys	0	1,000	1,040	1,050	1,070	0	1,000	1,000
Sutherland	2000	2,000	2,000	0	4,050	0	4,000	2,000
Sydney Estonian	0	160	0	170	325	150	0	150
Sydney Indonesian	2,000	2,050	2,100	2,145	2,165	2,000	2,000	2,000
Sydney St Paul's	14,170	6,000	5,000	6,000	6,000	6,000	6,000	6,000
Tamworth	1,500	1,550	1,600	1,600	1,625	1,500	1,500	1,500
Temora	13,000	12,000	12,000	0	0	27,800	0	10,000
Tuggeranong	10,000	10,200	10,200	10,200	10,500	0	15,000	7,000
Wagga Wagga	0	7,000	8,500	7,600	7,750	7,500	7,500	7,500
Walla Walla	9,000	12,000	10,200	10,350	10,500	8,000	4,000	4,000
West Wyalong	5,000	5,000	5,000	5,000	2,500	2,500	1,500	1,500
Woden Valley	31,000	32,000	32,500	33,000	33,500	30,000	30,000	30,000
Yagoona	1500	1,550	0	1600	250	200	200	
<b>Totals</b>	<b>208,833</b>	<b>222,516</b>	<b>209,836</b>	<b>204,906</b>	<b>193,326</b>	<b>169,130</b>	<b>156,985</b>	<b>164,450</b>

# Total Contributions from Congregations



## Property Trust

- |     |            |   |     |            |  |
|-----|------------|---|-----|------------|--|
| 360 | 15/05/2017 | NSW District – Concord House, 15 - 17 Blaxland Rd, Variation to a Lease from Peter Han to Jong Woo  | 374 | 31/10/2018 | GKIA Yagoona – Church and Manse, 167 Rose St, Purchase from Yagoona Lutheran Church  |
| 361 | 26/07/2017 | St John's, Gilgandra – Bookshop, Miller St, Contract for Sale and Transfer to Openway Bookshop Gilgandra Association Inc                        | 375 | 19/12/2018 | NSW District – Investment account LLL, Proceeds from sale of Concord House   |
| 362 | 18/08/2017 | NSW District – Concord House, 15 - 17 Blaxland Rd, Car Park License for 5 cars to Interactive Freight Systems                                   | 376 | 21/12/2018 | NSW District – Investment account LLL, Transfer fee from Concord House Sale to NSW District  |
| 363 | 16/10/2017 | NSW District – Concord House, 15 - 17 Blaxland Rd, Car Park License for 6 cars to Interactive Freight Systems                                   | 377 | 21/12/2018 | NSW District – Investment account LLL, Transfer for Concord House sale Tithe to LCA  |
| 364 | 24/10/2017 | NSW District – Concord House, 15 - 17 Blaxland Rd, Deed of Variation of Deed of Call and Put for 6.5 months delayed settlement to Ecove Pty Ltd | 378 | 03/02/2019 | Southern Cross Bass Hill Finnish – Church/Manse, 23 Sevenoaks Cr, Contract for Sale of 1% of Property to NSW District                        |
| 365 | 24/12/2017 | NSW District – Concord House, 15 - 17 Blaxland Rd, Lease to Ecove Pty Ltd for Level 1   | 378 | 03/02/2019 | NSW District – Church/Manse, 23 Sevenoaks Cr Bass Hill, Contract for Purchase of 1% of Property from Bass Hill Lutheran Church               |
| 366 | 15/06/2018 | St Paul's St Marys – Manse, 14 Bowerbird Crescent, Contract for Sale to Ngov and Pham   | 379 | 06/03/2019 | Peace Anna Bay – Church and Hall, Gan Gan Rd, Contract for Sale to Joselee Pty Ltd and Lamcor Pty Ltd  |
| 367 | 01/07/2017 | NSW District – Concord House, 15 - 17 Blaxland Rd, Variation to a Lease from Jong Woo to Jaesung Ko Services                                    | 380 | 18/04/2019 | NSW District – Manse, 13 Brighton Dr, Bella Vista, Contract for Purchase from Clarkson   |
| 368 | 16/07/2018 | St Paul's St Marys – Manse, 14 Bowerbird Cr, Transfer for Sale to Ngov and Pham   | 381 | 01/05/2019 | NSW District – District Office, Suite 215, Building B, 20 Lexington Dr Bella Vista, License to occupy from Presida Constructions Pty Ltd     |
| 369 | 26/07/2018 | Bethlehem Jindera – Manse, 105 – 107 Wood St, Purchase of Crown land from Department of Industry  | 381 | 01/05/2019 | NSW District – District Office, Suite 216, Building B, 20 Lexington Dr Bella Vista, License to occupy from Presida Constructions Pty Ltd     |
| 369 | 26/07/2018 | Bethlehem Jindera – Church, Adams St Jindera, Purchase of Crown land from Department of Industry  | 382 | 21/05/2019 | NSW District – District Office, Suite 215, Building B, 20 Lexington Dr Bella Vista, Transfer for Purchase from Presida Constructions Pty Ltd |
| 370 | 03/08/2018 | Albury Aged Care – Office, 19 Balfour St Culcairn, Contract for sale to Blunden   | 382 | 21/05/2019 | NSW District – District Office, Suite 216, Building B, 20 Lexington Dr Bella Vista, Transfer for Purchase from Presida Constructions Pty Ltd |
| 371 | 17/09/2018 | Albury Aged Care – Office, 19 Balfour St Culcairn, Transfer for sale to Blunden   | 383 | 21/05/2019 | NSW District – Investment account LLL, Transfer of funds for 20 Lexington purchase   |
| 372 | 23/10/2018 | NSW District – Concord House, 15 - 17 Blaxland Rd, Contract for Sale and Transfer to Ecove Properties Pty Ltd                                   | 384 | 30/05/2019 | NSW District – Investment account LLL, Transfer of funds for 13 Brighton purchase  |
| 373 | 25/10/2018 | NSW District – District Office, Suite 215, Building B, 20 Lexington Dr Bella Vista, Contract for Purchase from Presida Constructions Pty Ltd    | 385 | 30/05/2019 | NSW District – Manse, 13 Brighton Dr, Bella Vista, Transfer for Purchase from Clarkson   |
| 373 | 25/10/2018 | NSW District – District Office, Suite 216, Building B, 20 Lexington Dr Bella Vista, Contract for Purchase from Presida Constructions Pty Ltd    | 386 | 25/08/2019 | Bethlehem Jindera – Lot 66 in DP1195450, Application to Subdivide to Greater Hume Shire Council  |
| 374 | 31/10/2018 | Concordia Yagoona – Church and Manse, 167 Rose St, Sale to Indonesian Lutheran Church Sydney (GKIA)   | 387 | 22/10/2019 | Peace Anna Bay – Church and Hall, Gan Gan Rd, Contract for Sale to McGrath   |
|     |            |   | 388 | 26/11/2019 | Peace Anna Bay – Church and Hall, Gan Gan Rd, Transfer for Sale to McGrath   |
|     |            |   | 389 | 22/1/2020  | NSW District – Discharge of Breglec Mortgage   |

# Anniversaries and Pastor Changes

## Anniversaries

	Multiples of 5	
5 Nov 2017	150 years	St Peter's Gerogery
30 Sept 2017	125/65 yrs	St Paul's Parkes congregation/building
18 March 2018	70 years	St Paul's College Walla Walla
17 Dec 2017	50 years	Good Shepherd Sutherland congregation
26 May 2018	25 years	GKIA Sydney Indonesian congregation
6 May 2018	30 years	St Peter's Port Macquarie
4 Nov 2018	135/130 yrs	St Johns Pleasant Hills congregation/building
28 Oct 2018	40 years	Temora Open Door Bookshop
16 Sept 2018	50 years	Immanuel West Wyalong
9 Sept 2018	40 years	Good Shepherd Sutherland church building
16 Dec 2018	40 years	St Mark's Dubbo
24 Mar 2019	150 years	Zion Walla Walla
30 Jun 2019	150 years	Bethel congregation
24 Mar 2019	150 years	Walla Walla congregation
6 Oct 2019	50 years	Warrambui Retreat and Conference Centre

## Installations

21 Nov 2017	Pr Allan Taruste	Central Coast
21 Jan 2018	Pr James Haak	District Bishop
28 Jan 2018	Pr Joseph Graham	Dubbo Gilgandra
4 Feb 2018	Pr Kees Sturm	Henty
20 Jan 2019	Pr Darryl Mattner	Chaplain, Albury Aged Care
3 Feb 2019	Pr Mathew von Stanke	Epping/Newcastle
10 Feb 2019	Pr James Leach	Central West Parish
23 Mar 2019	Pr Robert Bartholomaeus	District Bishop
5 May 2019	Pr Erik Braunack-Mayer	Illawarra (secondment)
18 Aug 2019	Pr Peter Fuhlbohm	Lavington
2 Feb 2020	Pr Hans Peethala	Liverpool

## Accepted calls within District

23 Mar 2019	Pr Robert Bartholomaeus	Woden to District Bishop
2 Feb 2020	Pr Hans Peethala	Belconnen to Liverpool

## Accepted calls out of District

28 Aug 2016	Pr Andrew Neumann	Lavington to Lowood Qld
9 Dec 2018	Pr Michael Rudolph	Epping/Newcastle to Duncraig WA
Jan 2019	Pr Kim Kuchel	Army Chaplain, Holsworthy to Karrakatta WA

## Retirements

27 Aug 2017	Pr Tim Zanker	Bankstown Parish
7 Jan 2018	Pr Mark Lieschke	District Bishop
14 Oct 2018	Pr David Thompson	St Marys (SMP)
22 Dec 2018	Pr Robert Hamann	Springwood
31 Dec 2018	Pr Bruce Hohnberg	Coffs Harbour (SMP)

## Death

20 Oct 2018	Pr James Haak (aged 59 years)
-------------	-------------------------------

## Closures

30 Dec 2018	Peace Coffs Harbour
14 Nov 2019	Peace Anna Bay

## Ordination

10 Dec 2017	Pr Ian Rentsch	Belconnen
-------------	----------------	-----------

## Parish Realignments

21 Oct 2018	Bankstown Parish dissolved (Liverpool, Yagoona)
19 May 2019	Lavington Parish dissolved (Lavington, Corowa)
19 May 2019	Albury Parish formed (Albury, Corowa)

# Roll of District Pastors

<b>LCA Parish Pastors</b>	<i>Parish location</i>	<i>Pastor</i>	<i>Installation Date</i>
	Albury	Pr David Grulke	11 May 2014
	Albury Aged Care	Pr Darryl Mattner	20 Jan 2019
	Belconnen	Pr Ian Rentsch	10 Dec 2017
	Burrumbuttock/Jindera	Pr Christian Fandrich	30 Nov 2014
	Canberra Finnish	Pr Janne Pekkarinen	4 Sept 2011
	Canberra/Queanbeyan	Pr Gabor Szabo	17 Jan 2010
	Central Coast	Pr Allan Taruste	21 Nov 2017
	Central West	Pr James Leach	10 Feb 2019
	Cooma	Pr Melvin Salzke	13 Feb 2010
	Epping/Newcastle	Pr Mark Schultz	5 Nov 2006
		Pr Mark Simpfendorfer	24 Nov 2006
		Pr Mathew von Stanke	3 Feb 2019
	Gilgandra/Dubbo	Pr Joseph Graham	28 Jan 2018
	Henty	Pr Kees Sturm	4 Feb 2018
	Illawarra	Pr Simon Mackenzie	2 Aug 2015
		Pr Erik Braunack-Mayer	5 May 2019
	Lavington	Pr Peter Fuhlbohm	18 Aug 2019
	Liverpool	Pr Hans Peethala	2 Feb 2020
	Sutherland	Pr Mathew Eckermann	12 Oct 2014
	Sydney Finnish	Pr Aapo Kavosoja	27 Nov 2016
	Sydney/Narraweena	Pr Richard Schwedes	24 July 2016
	Temora/West Wyalong	Pr Darren Kupke	8 Feb 2015
	Tuggeranong	Pr Paul Hannola	11 Sept 2016
	Wagga Wagga	Pr Stuart Kleinig	13 Nov 2016
	Walla Walla	Pr Dan Mueller	5 Feb 2017

<b>Vacant Parishes</b>	Belconnen
	Springwood
	St Marys
	Woden Valley

<b>Vacant Parishes not in the Call Process</b>	Campbelltown
	Gunnedah/Tamworth
	Leeton/Griffith
	Port Macquarie
	Sydney Chinese
	Yagoona

<b>Non LCA Pastors</b>	Sydney Indonesian	Pr Sahat Simanullang	3 Feb 2008
------------------------	-------------------	----------------------	------------

<b>District Pastors</b>	District Bishop	Pr Robert Bartholomaeus	23 Mar 2019
	St Paul's College Chaplain	Pr John Borchert	29 Apr 2003

<b>Seconded District Pastor</b>	Army Chaplain	Pr Darren Jaensch
-------------------------------------	---------------	-------------------

<b>Leave of Absence</b>	Pr Will Frost
-------------------------	---------------

<b>Emeriti</b>	Pr Haydn Blaess	Pr Dennis Obst
	Pr Arpad Breglec	Pr John Simboras
	Pr John Grosse	Pr Sam Simpfendorfer
	Pr Robert Hamann	Pr David Thompson
	Pr Marinus Hofman	Pr Ren Tschirpig
	Pr Bruce Hohnberg	Pr Terry Unger
	Pr James Janetzki	Pr Fred Veerhuis
	Pr Gary Kenney	Pr Gordon Watson
	Pr Ian Kotzur	Pr Clem Zanker
	Pr Rex Mickan	Pr Tim Zanker

Summary	
Parish pastors	25
District pastors	2
Emeriti	20
Seconded pastors	1
<b>Total District pastors</b>	<b>48</b>
Non LCA pastors	1
Parishes vacant	4

## LCA NSW Statistics

Congregation/Parish location	Baptised members				Communing members				Attendance per week				Total Income			
	2015	2016	2017	2018	2015	2016	2017	2018	2015	2016	2017	2018	2015	2016	2017	2018
<b>Albury</b>	<b>157</b>	<b>163</b>	<b>107</b>		<b>138</b>	<b>138</b>	<b>153</b>		<b>96</b>	<b>87</b>	<b>107</b>		<b>209,778</b>	<b>128,829</b>	<b>120,504</b>	
<b>Albury Aged Care</b>																
<b>Belconnen</b>	<b>149</b>	<b>150</b>	<b>160</b>	<b>150</b>	<b>91</b>	<b>95</b>	<b>110</b>	<b>65</b>	<b>76</b>	<b>74</b>	<b>87</b>	<b>80</b>	<b>182,946</b>	<b>211,954</b>	<b>226,359</b>	<b>244,937</b>
Bethel	21	21	23	23	15	15	15	15	15	15	16	16	16,320	15,570	15,287	13,717
Burrumbuttock	40	31	32	41	24	23	22	22	18	14	13	15	17,385	15,803	24,374	27,034
Gerogery	46	44	38	39	34	31	30	30	24	27	29	21	25,680	23,800	29,420	26,740
Jindera: Bethlehem	65	47	47	46	50	44	38	40	33	29	25	27	108,051	128,202	75,920	72,057
Jindera: Chapel	90	103	92	84	104	60	46	38	50	61	44	30				
<b>Burrumbuttock</b>	<b>262</b>	<b>246</b>	<b>232</b>	<b>233</b>	<b>227</b>	<b>173</b>	<b>151</b>	<b>145</b>	<b>140</b>	<b>146</b>	<b>127</b>	<b>109</b>	<b>167,436</b>	<b>183,375</b>	<b>145,001</b>	<b>139,548</b>
<b>Campbelltown</b>	<b>56</b>	<b>51</b>	<b>51</b>	<b>51</b>	<b>51</b>	<b>49</b>	<b>47</b>	<b>47</b>	<b>39</b>	<b>27</b>	<b>26</b>	<b>25</b>	<b>72,633</b>	<b>80,951</b>	<b>74,168</b>	<b>71,974</b>
<b>Canberra Finnish</b>	<b>220</b>				<b>150</b>				<b>17</b>				<b>110,835</b>			
Queanbeyan	22	20	12	9	20	20	12	9	9	8	7	6	13,602	13,613	20,027	14,058
Reid	52	54	42	42	47	47	40	40	43	40	48	36	118,098	113,531	102,772	111,524
<b>Canberra / Queanbeyan</b>	<b>74</b>	<b>74</b>	<b>54</b>	<b>51</b>	<b>67</b>	<b>67</b>	<b>52</b>	<b>49</b>	<b>52</b>	<b>48</b>	<b>55</b>	<b>42</b>	<b>131,700</b>	<b>127,144</b>	<b>122,799</b>	<b>125,582</b>
<b>Central Coast</b>	<b>30</b>	<b>41</b>	<b>59</b>		<b>30</b>	<b>41</b>	<b>38</b>		<b>28</b>	<b>29</b>	<b>28</b>		<b>24,875</b>	<b>177,958</b>	<b>66,115</b>	
Orange	20	20	18	22	17	17	15	17	14	12	12	11	10,830	12,809	19,216	19,480
Forbes	10	10	15	9	10	8	15	8	6	5	6	6	8,253	9,220	10,000	10,156
Parkes	33	33			31	24			21	18			44,073			
<b>Central West</b>	<b>43</b>	<b>43</b>			<b>41</b>	<b>32</b>			<b>27</b>	<b>23</b>			<b>52,326</b>	<b>9,220</b>	<b>29,216</b>	<b>29,636</b>
<b>Coffs Harbour</b>	<b>11</b>	<b>11</b>	<b>11</b>	<b>11</b>	<b>9</b>	<b>9</b>	<b>9</b>	<b>11</b>	<b>4</b>	<b>4</b>	<b>4</b>	<b>4</b>	<b>3,835</b>	<b>3,806</b>	<b>3,931</b>	<b>3,335</b>
<b>Cooma</b>																
<i>Coonabarabran</i>																
Dubbo		42	36			30	30			21	22			77,970	62,447	
Gilgandra			11				11				5				30,350	
<i>Nyngan</i>																
<b>Dubbo/Gilgandra</b>	<b>42</b>				<b>30</b>				<b>21</b>				<b>77970</b>	<b>92,797</b>		
<b>Epping/Newcastle</b>	<b>290</b>	<b>294</b>		<b>291</b>	<b>170</b>	<b>170</b>		<b>170</b>	<b>171</b>	<b>142</b>		<b>144</b>	<b>326,935</b>	<b>439,719</b>		<b>477,372</b>
Culcairn	85	64	70	70	34	30	27	26	35	28	29	22	34,737	37,232	51,355	44,928
Henty	238	237			122	120	116		99	90	83		116,736	109,192	106,882	
Pleasant Hills																
<b>Henty</b>	<b>323</b>	<b>301</b>			<b>156</b>	<b>150</b>	<b>143</b>		<b>134</b>	<b>118</b>	<b>112</b>		<b>151,473</b>	<b>146,424</b>	<b>158,237</b>	
<i>Nowra</i>																
Oak Flats																
Wollongong																
<b>Illawarra</b>																
Corowa		7		8		7		8		4		2		6,185		2,843
Lavington	80	98		76	78	90		76	59	62		39	69,000	89,100		92,358
<b>Lavington</b>	<b>80</b>	<b>105</b>		<b>84</b>	<b>78</b>	<b>97</b>		<b>84</b>	<b>59</b>	<b>66</b>		<b>41</b>	<b>69000</b>	<b>95,285</b>		<b>95,201</b>
Griffith		26				22				13				16,770		
Leeton																
<b>Leeton/Griffith</b>																
<b>Liverpool</b>	<b>69</b>	<b>67</b>	<b>52</b>	<b>58</b>	<b>36</b>	<b>34</b>	<b>35</b>	<b>41</b>	<b>23</b>	<b>23</b>	<b>26</b>	<b>24</b>	<b>63,251</b>	<b>73,220</b>	<b>40,847</b>	<b>24,861</b>
Pt Macquarie	45	35	37	45	32	29	33	35	31	27	32	35	35,234	35,752	38,531	54,645
<b>Port Macquarie</b>	<b>45</b>	<b>35</b>	<b>37</b>	<b>45</b>	<b>32</b>	<b>29</b>	<b>33</b>	<b>35</b>	<b>31</b>	<b>27</b>	<b>32</b>	<b>35</b>	<b>35,234</b>	<b>35,752</b>	<b>38,531</b>	<b>54,645</b>

**For Statistics tables please note:**

- Empty spaces shows no Statistical Return received or no detail filled in Statistical Return.
- For some totals (eg parish or District) missing figures need to be taken into account.
- Average attendance is for per week where 52 or more services were held during the year, or per service for those who had less than 52.
- A 'communing member' is a member who communes at least twice a year

## LCA NSW Statistics

Congregation/Parish location	Baptised members				Communing members				Attendance per week				Total Income			
	2015	2016	2017	2018	2015	2016	2017	2018	2015	2016	2017	2018	2015	2016	2017	2018
Springwood	60	55	60	63	52	48	55	54	29	32	29	31	56,170	47,905	54,125	
St Marys	61	43	41		49	41	33		29	27	21		53,682	46,441	47,997	
Sutherland	93	85	85	82	73	52	51	49	33	26	29	27	107,490	107,365	92,533	
Narraweena	38	36			28	18			18	17			89,971	95,640		
St Paul's Sydney	79	87	160	160	68	68	84	72	53	50	60	57	114,240	146,609	156,700	172,712
Sydney/Narraweena	117	123	160	160	96	86	84	72	71	67			204,211	242,249		
Sydney Chinese																
Sydney Finnish		200		200		80		100		11		21	45,060			61,925
Sydney Indonesian																
Gunnedah																
Tamworth	21	23	26	22	13	16	17	18	12	12	14	13	11,628	12,647	11,839	10,424
Tamworth / Gunnedah																
Temora	210	207	206	206	105	106	103	103	78	75	70	74	149,373	127,663	132,242	78,184
Tuggeranong	94	86	78	95	98	70	68	93	81	58	57	56	159,422	173,681	123,771	123,324
Milbrulong		38	30	27		18	14	15		6	11	8	10,843	7,099	9,576	
Wagga Wagga		146	134	121		102	94	87		83	82	77	159,311	98,994	163,793	
Wagga Wagga		184	164	148		120	108	102		89	93	85	170,154	106,093	173,369	
Alma Park		82	80	80		55	53	53		43	46	40	49,109	59,197	52,558	
Walla Walla	166	163	145	142	131	133	114	110	87	73	85	70	95,451	78,465	78,493	88,321
Walla Walla	166	245	225	222	131	188	167	163	87	116	131	110	95,451	127,574	137,690	140,879
West Wyalong	30	27		27	30	27		27	9	9		8	15,263	16,076		10,426
Woden Valley	202	199	200	206	141	131	120	136	116	104	107	106	296,081	268,212	270,746	324,350
Yagoona	27	29			20	21			11	12			54,652	49,039		
<b>DISTRICT TOTALS</b>	<b>2503</b>	<b>3378</b>	<b>2196</b>	<b>2672</b>	<b>1783</b>	<b>2278</b>	<b>1636</b>	<b>1806</b>	<b>1326</b>	<b>1523</b>	<b>1241</b>	<b>1266</b>	<b>2,307,362</b>	<b>3,302,343</b>	<b>2,381,021</b>	<b>2,740,889</b>

## 2018 LCA Statistics Summary (from LAMP)

	LCA	LCNZ	NSW/ACT	QLD	SA/NT	VIC/TAS	WA
<b>Congregations</b>	451	13	53	113	182	74	16
<b>Worship Centres</b>	82	1	11	29	19	20	2
<b>Statistical Returns Submitted</b>	329	7	31	103	142	38	8
<b>Baptised Members</b>	37337	505	2443	11847	16869	5196	477
<b>Confirmed Members</b>	30026	422	1970	9515	13293	4454	372
<b>Communing Members 18 or over</b>	24968	402	1656	8025	11355	3182	348
<b>Average Weekly Attendance at Worship</b>	19094	313	1162	5981	9126	2220	292
<b>Children in Children's Groups</b>	2412	104	62	802	1084	291	69
<b>Youth in Youth Groups</b>	1021	18	18	323	491	156	15
<b>Income - Local and Parish Offerings</b>	\$24,045,804	\$616,481	\$1,768,888	\$6,719,643	\$11,202,515	\$3,162,126	\$576,152
<b>Income - Total</b>	\$33,196,053	\$953,161	\$2,662,705	\$10,411,092	\$14,200,984	\$4,329,871	\$638,240
<b>Expenditure - Synod</b>	\$2,381,506	\$72,639	\$156,826	\$584,013	\$1,088,263	\$459,720	\$20,045
<b>Expenditure - Other</b>	\$4,081,255	\$39,630	\$185,755	\$1,553,789	\$1,781,798	\$491,322	\$28961

# District Roll of Parishes, Pastors, Congregations, Preaching Places and Delegates

Parish	Pastor	Installed	Congregation	Members	Delegates
Albury	Pr David Grulke	11 May 2014	St Luke	160	2
			St Andrew, Corowa	8	1
Albury Aged Care	Pr Darryl Mattner	20 Jan 2019			
Belconnen	Vacant		Holy Cross	85	1
Burrumbuttock	Pr Christian Fandrich	30 Nov 2014	Trinity, Bethel	15	1
			Holy Cross, Burrumbuttock	22	1
			St Peter, Gerogery	30	1
			Bethlehem, Jindera	40	2
			Chapel, Jindera	38	
			Good Shepherd	47	1
Campbelltown					1
Canberra Estonian	Pr Allan Taruste	1 Feb 2016			1
Canberra Finnish	Pr Janne Pekkarinnen	4 Sept 2011	Trinity, Watson		1
Canberra/Queanbeyan	Pr Gabor Szabo	17 Jan 2010	St John the Baptist, Queanbeyan	9	1
			St Peter, Reid	41	1
Central Coast	Pr Allan Taruste	21 Nov 2017	St Matthew	38	1
Central West	Pr James Leach	10 Feb 2019	St Peter, Orange	17	1
			St John, Forbes	8	1
			St Paul, Parkes	24	1
Cooma	Pr Melvin Salzke	13 Feb 2010	Trinity	15	1
Dubbo/Gilgandra	Pr Joseph Graham	28 Jan 2018	St Mark, Dubbo	30	1
			St John, Gilgandra	11	1
			<i>Coonabarabran</i>	3	
			<i>Nyngan</i>	5	
Epping/Newcastle	Pr Mark Schultz	5 Nov 2006			
	Pr Mark Simpfendorfer	2 Dec 2007	LifeWay Epping & Newcastle	176	2
	Pr Mat von Stanke	3 Feb 2019			
Gunnedah/Tamworth	vacant		Trinity, Gunnedah	11	1
			St Paul, Tamworth	18	1
			<i>Armidale</i>		
Henty	Pr Kees Sturm	4 Feb 2018	St Stephen, Culcairn	26	1
			St Paul, Henty	116	2
			St John, Pleasant Hills	17	1
Illawarra	Pr Simon Mackenzie	2 Aug 2015	Living Water Wollongong, Oak	50	1
	Pr Erik Braunack-Mayer	5 May 2019	Flats & Nowra		
Lavington	Pr Peter Fuhlbohm	18 Aug 2019	St Peter, Lavington	84	1
Leeton/Griffith	vacant		St Paul, Griffith	22	1
			St John, Leeton	17	1
Liverpool	Pr Hans Peethalal	2 Feb 2020	Living Waters, Liverpool	41	1
Port Macquarie	vacant		St Peter's	35	1
Springwood	vacant		Our Saviour	53	1
St Marys	vacant		St Paul	33	1
Sutherland	Pr Mat Eckermann	12 Oct 2014	Good Shepherd	48	1
Sydney Chinese	vacant		Sydney Chinese		1
Sydney/Narraweena	Pr Richard Schwedes	24 July 2016	Redeemer, Narraweena	18	1
			St Paul, Sydney	72	1
Sydney Estonian	Pr Allan Taruste	1 Feb 2016			1
Sydney Finnish	Pr Aapo Kaivosoja	27 Nov 2016	Southern Cross, Bass Hill	100	1
Sydney Indonesian	Pr Sahat Simanullang	3 Feb 2008	GKIA, Yagoona	90	1
Temora	Pr Darren Kupke	8 Feb 2015	Trinity	99	1
			Immanuel, West Wyalong	27	1
Tuggeranong	Pr Paul Hannola	11 Sept 2016	Good Shepherd	93	1
Wagga Wagga	Pr Stuart Kleinig	13 Nov 2016	Bethlehem, Wagga Wagga	103	2
			Milbrulong	16	1
Walla Walla	Pr Dan Mueller	5 Feb 2017	Salem, Alma Park	55	1
			Zion, Walla Walla	160	2
Walla Walla St Paul's College	Pr John Borchert	29 Apr 2003	<i>St Paul's College</i>		
Woden Valley	vacant		Immanuel	136	2
Yagoona	vacant		Concordia	21	1

## District Roll of Parishes, Pastors, Congregations, Preaching Places and Delegates

Delegates: 1 delegate per 100 communicant members or part thereof  
with maximum of 3 from any one congregation.

Figures based on the last congregation Statistical Return received.

<b>Parishes</b>	<b>33</b>
<b>Congregations</b>	<b>50</b>
<b>Preaching places</b>	<b>3</b>
<b>Lay Delegates</b>	<b>56</b>

## Year and location of Synodical Convention and Pastors' Conference

<u><b>Year</b></u>	<u><b>No</b></u>	<u><b>Convention</b></u>	<u><b>Pastors' Conference</b></u>
1966	Const.	Temora	Temora
1968	1st Regular	Strathfield	St Paul's & Trinity Sydney
1969	2nd	Henty	
1970	3rd	Parkes	Parkes
1971	4th	Wollongong	Wollongong
1972	5th	Jindera	Burrumbuttock
1973	6th	Canberra (St Peter's)	Cooma
1974	7th	Epping	Epping
1975	8th	Wagga Wagga	Temora
1976	9th	Homebush	St Marys
1977	10th	Temora	West Wyalong
1978	11th	Walla Walla	Henty
1979	12th	Newcastle	Gosford
1980	13th	Albury	Jindera
1981	14th	Wollongong	Oak Flats
1982	15th	Woden Valley	Warrambui
1983	16th	Henty	Warrambui
1984	17th	Gosford	Maitland
1985	18th	Gilgandra	Dubbo
1986	19th	Belconnen	Warrambui
1987	20th	Jindera	Overdale, Wagga
1988	21st	Epping	Caritas Christi Centre Wahrenonga
1989	22nd	Parkes	Parkes
1990	23rd	Lavington	Bach Creek Christian Centre, Yackandandah
1991	24th	Tuggeranong	Warrambui
1992	25th	Warrambui	Warrambui
1994	26th	St Paul's Sydney	Randwick
1996	27th	Dubbo	Dubbo
1998	28th	Wagga Wagga	Wagga Wagga
2001	29th	Belconnen ACT	Warrambui
2003	30th	Dubbo	Dubbo
2005	31st	Newcastle	Maitland
2007	32nd	Warrambui	Warrambui
2009	33rd	Warrambui	Warrambui
2011	34th	Henty	Hanericka Farm, Yerong Creek
2013	35th	Warrambui	Warrambui
2014	Special Synod	Belconnen	
2015	36th Regular	Warrambui	Warrambui
2017	37th	Warrambui	Woden
2019	Special Synod	Warrambui	
2020	38th Regular	Walla Walla	Albury

## Formal Declaration of Close of Convention

**Bishop:** *The word of God will not fail to do what he plans for it;*  
**Assembly:** **it will do everything he sends it to do.**

**Bishop:** *We are Christ's witnesses*  
**Assembly:** **to the ends of the earth.**

**Bishop:** *He has chosen and appointed us to go and bear fruit —*  
**Assembly:** **fruit that will last.**

**Bishop:** *He is with us always,*  
**Assembly:** **to the very end of the age.**

**Bishop:** *The Lord be with you*  
**Assembly:** **And also with you**

**Bishop:** *Lord God, heavenly Father, we thank you for the help and guidance of your Holy Spirit during this convention. Grant to your church your Spirit and the wisdom that comes down from heaven, so that your word may not be restricted but may spread widely and bring joy by building up your holy people. Keep us firm in faith and active in love, as we carry out what we have decided; through Jesus Christ our Lord.*  
**Assembly:** **Amen.**

**Bishop:** *Lord God, our Father, as you kept Abraham and Sarah in safety throughout the days of their pilgrimage, as you led the children of Israel through the midst of the sea, and as you led the wise men to the infant Jesus by a star: Protect and guide us as we now set out to travel, keep us safe in your care, give us grace to serve you faithfully, and bring us at last to our heavenly home, where you live and reign with your Son and the Holy Spirit, one God, now and forever.*  
**Assembly:** **Amen.**

**Bishop:** *I now declare this convention closed,  
in the name of the Father and of the Son † and of the Holy Spirit.*  
**Assembly:** **Amen.**

**Bishop:** *Go in peace. Serve the Lord.*  
**Assembly:** **Thanks be to God.**



